



- **2024 HURRICANE PREPAREDNESS**

DECLARATIONS OF EMERGENCY

- PARISH PRESIDENT
- MAYORS
- TRIBAL CHIEF OF THE CHITIMACHA TRIBE
- GOVERNOR MAKES DECLARATION REQUEST
- TO THE PRESIDENT
- PRESIDENT OF U.S. DECLARES A NATIONAL EMERGENCY



EMERGENCY OPERATIONS CENTER

EMERGENCY MEETINGS WILL BE HELD WITH PUBLIC OFFICIALS AND SUPPORT STAFF WHO GET BRIEFED BY THE WEATHER SERVICE AND GOHSEP.

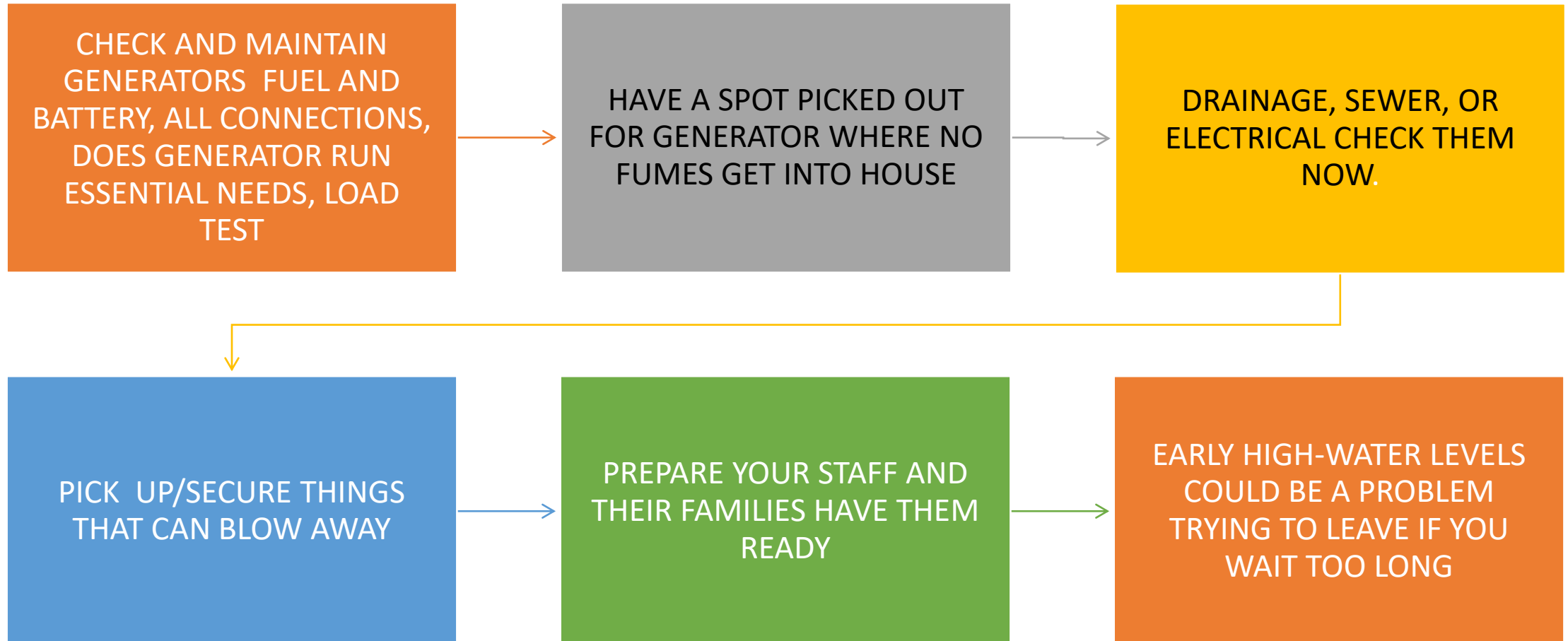
DECISIONS ARE MADE AS TO RESOURCES, EVACUATIONS, PLAN OF ACTION TO TAKE.

PUBLIC INFORMATION IS PUT OUT TO OUR FACEBOOK PAGES ALONG WITH CONTINUOUS UPDATES

AFTER EACH MEETING, EMAILS ARE SENT OUT TO ALL AGENCIES/MEDIA

SLIDES FROM WEATHER SERVICE WILL BE ATTACHED AND ANY UPDATES WILL BE SENT

PRE STORM





LOCAL GOVERNMENT PRE STORM ACTIONS

PARISH, MUNICIPALITIES, LAW/FIRE, REC/DRAINAGE,SEWER DISTRICTS PREPARE, STOCK UP ON NEEDED ITEMS. FUEL SOURCE FOR VEHICLES/PUMPS.

SANDBAGS, SAND/ GIVE US AND THE PUBLIC THE LOCATIONS AND HRS OF OPERATION. ALL MUNICIPALITIES SHOULD HAVE A SUPPLY OF SANDBAGS.

TAKE STOCK IN WHAT YOU HAVE ON HAND AND GET WHAT'S NEEDED

GENERATORS; SERVICE THEM, HAVE REPAIR ITEMS ON HAND.

FUEL PLANS MUST BE MADE AHEAD OF TIME.

DOCUMENT; INVOICES,PHOTOS OF FLOOD FIGHTING ACTIVITIES, STORM PREPARATIONS, FEMA REQUIRED (6 MONTHS LATER FEMA WILL ASK FOR THE PHOTOS) EACH DEPT SECURE THOSE AND TURN IN TO A DOCUMENT CUSTODIAN.


UPDATE CALLOUT LIST W/EMAIL INFO FOR ALL DEPARTMENTS.

TIDE AND STORM SURGE PROJECTIONS

THESE PROJECTIONS ARE FACTORS TO AID IN DECISION MAKING TO ISSUE EVACUATION ORDER IS TO BE ISSUED.



PROJECTIONS DO NOT TAKE INTO ACCOUNT THE WORK DONE BY THE ST MARY PARISH LEVEE DISTRICT. THE LEVEE DISTRICT MONITORS THE FORECAST AND DETERMINES WHAT OUR RISK LIMITS ARE.



WE ALSO MONITOR STORM SURGE LEVELS WITH WATER GUAGES ALONG THE COAST. THESE GIVE US GOOD INDICATIONS FOR MONITORING THE STORM.

GET A GAME PLAN

- MEDICAL NEEDS, OXYGEN, O2 GENERATORS TELL YOUR VENDORS TO BRING YOU EXTRA TANKS ETC.
- OXYGEN EXCHANGE BOTTLES IF SITUATION DICTATES, WE MAY GET SOME AT THE MC/FRANKLIN FIRE DEPT.
- POWER OUTAGES: GENERATORS/SAFETY/ CO2 DETECTOR
- FOOD AND WATER SUPPLY/PRESCRIPTIONS/EMERGENCY FUNDS
- TELL EVERYONE YOUR PLAN, FAMILIES CALL ONE PERSON OUTSIDE DANGER ZONE OF YOUR STATUS AND GIVE FREQUENT UPDATES.
- FIRE DEPTS WITH GENERATORS CAN PROVIDE EXTENSION CORD TO OUTSIDE AFTER THE STORM SO RESIDENTS CAN COME BY TO CHARGE THEIR OXYGEN GENERATORS WHEN POWER IS OUT. POWER PACKS AVAILABLE ALSO. ANYONE WITH OXYGEN GEN SHOULD PURCHASE A POWER PACK FOR RECHARGING.

KNOW YOUR EVACUATION ROUTES

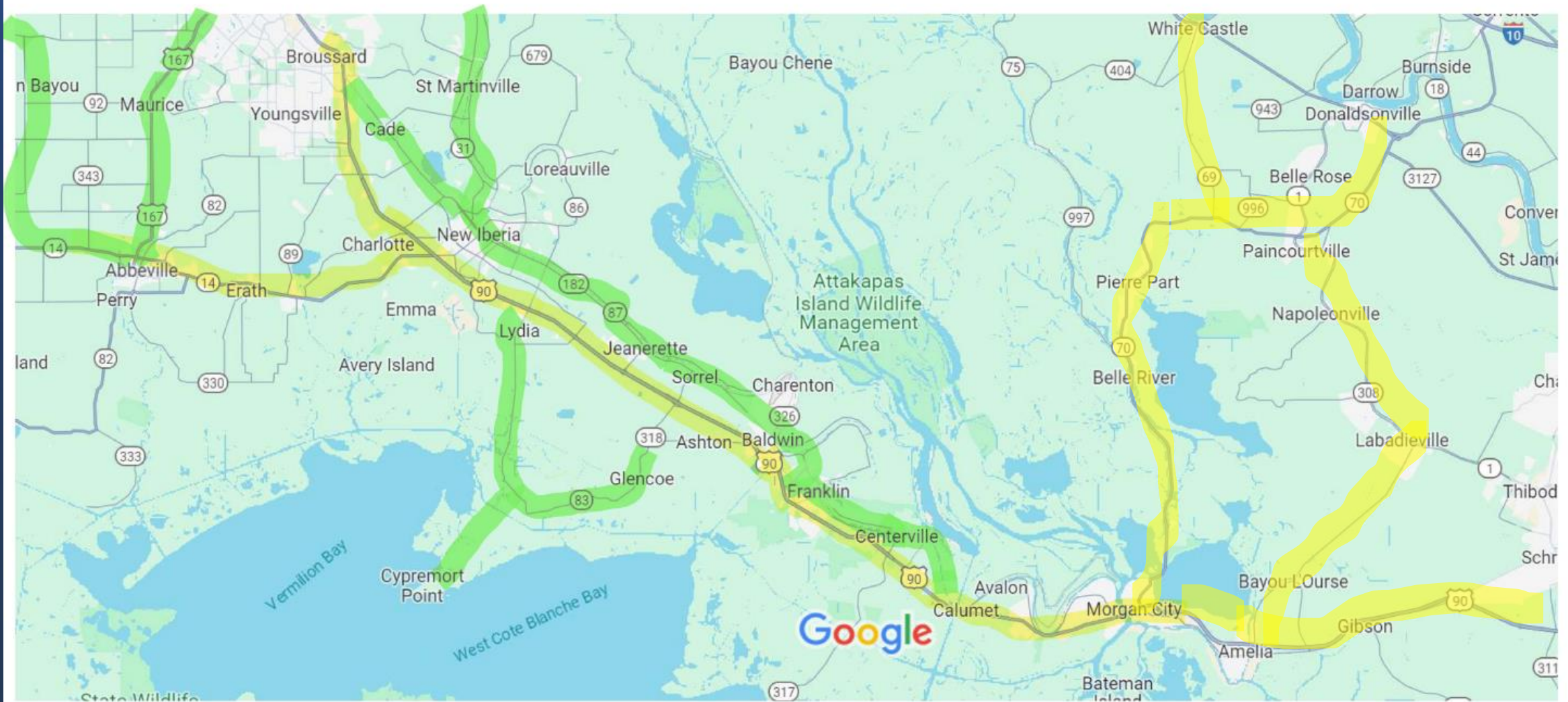
- TAKE HWY 90, HWY 182, HWY 14, HWY 70
- HWY 90 AT BALDWIN AND NEW IBERIA WILL BE BOTTLENECKED, PLAN ON LONG DELAYS OR USE ALTERNATE ROUTE AND LEAVE EARLY.
- **KEY FACT, THE SOONER YOU LEAVE THE BETTER AND BE PATIENT, DRIVE WITH CAUTION.**
- FILL UP CAR EARLY BEFORE LEAVING
- **BRING WATER, SNACKS, MEDICINE, PHONE CHARGERS FOR THE DRIVE.**
- USE 511LA.ORG FOR TRAFFIC INFORMATION BEFORE LEAVING
- MESSAGE BOARDS WILL BE OUT TO ASSIST WITH DIRECTIONS. TAKE ALTERNATE ROUTES TO LA182 TO BYPASS CONSTRUCTION AND THEN GET BACK ON HWY 90 FURTHER DOWN



EVACUATION CONCERNS

- PEOPLE HESITATE, LEAVE LATE WHEN ROADS ARE FULL, REMEMBER ST MARY NOT ONLY ONES ON THE ROAD
- HIGHWAY 90 WILL BE SINGLE LANES BOTH DIRECTIONS ST MARY PARISH LA 83 TO LA 318.
- IBERIA PARISH HWY 90 WILL STILL BE SINGLE LANE AT CONSTRUCTION SITE.
- LITTLE TIME TO LEAVE FOR SOME (STORM TRACKS SHIFT AND STORM INTENSIFIES AND SPEED INCREASES.)
- YOUR ESCAPE ROUTES GET BLOCKED BEFORE YOU DECIDE TO LEAVE.

HURRICANE EVACUATION ROUTES



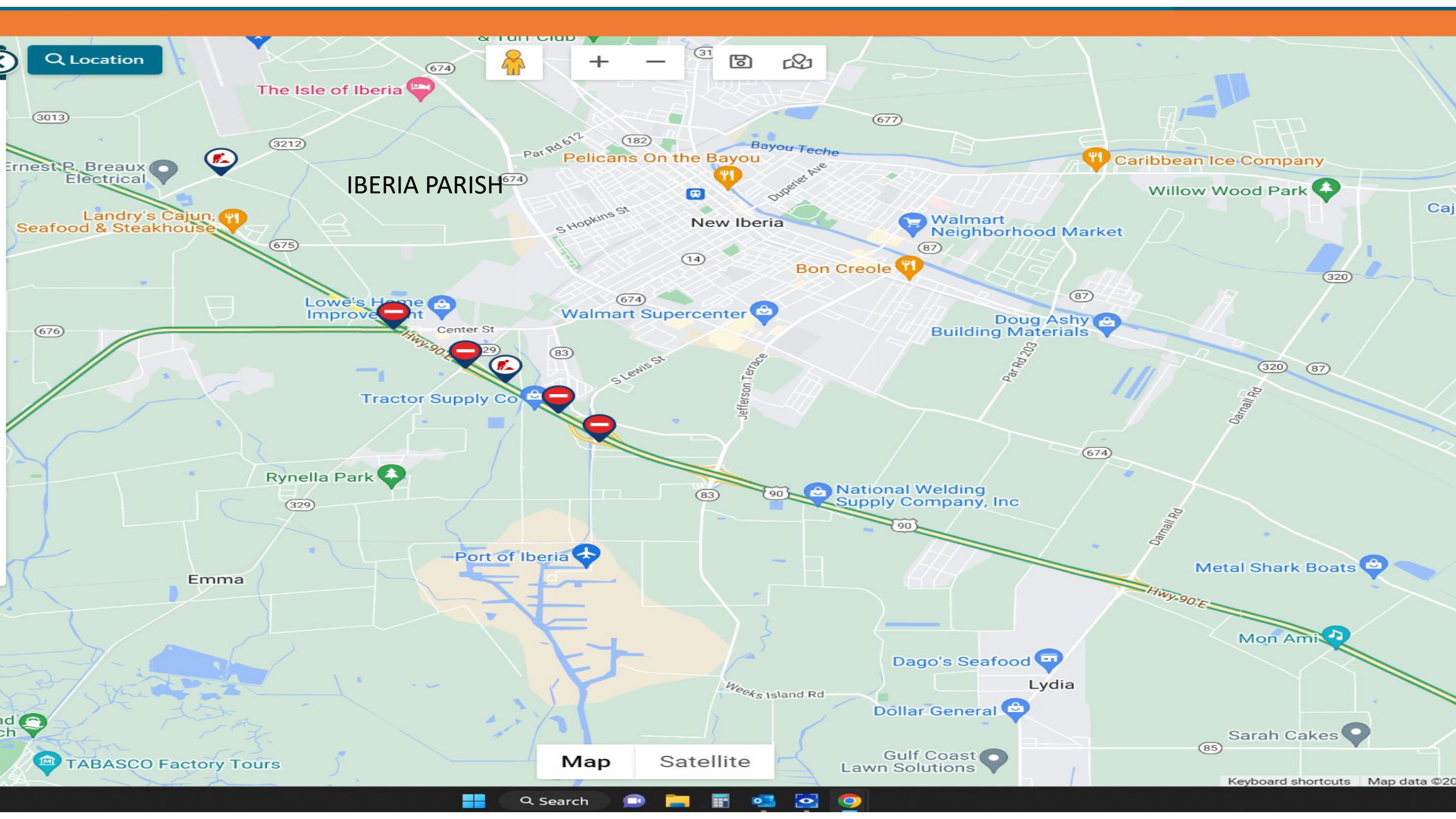
HIGHWAY 90 CONGESTION BE READY FOR IT!

HWY90 NEW IBERIA SINGLE LANE EASTBOUND AND WESTBOUND 3 MILES LONG

ST MARY HWY 90 TO LOOK LIKE THIS FOR **6 MILES LONG**







Location

IBERIA PARISH

The Isle of Iberia

Pelicans On the Bayou

Caribbean Ice Company

Landry's Cajun, Seafood & Steakhouse

New Iberia

Walmart Neighborhood Market

Willow Wood Park

Bon Creole

Lowe's Home Improvement

Walmart Supercenter

Doug Ashy Building Materials

Tractor Supply Co

National Welding Supply Company, Inc

Rynella Park

Port of Iberia

Metal Shark Boats

Emma

Mon Ami

Dago's Seafood

Lydia

Dollar General

Sarah Cakes

Gulf Coast Lawn Solutions

TABASCO Factory Tours

Map

Satellite

LAFAYETTE

IBERIA PARISH

New Iberia

675

674

14

674

Lowe's Home Improver
HWY 90 ON RAMP

Walmart Supercenter

Center St

8 min
3.6 miles

Tractor Supply Co

Jefferson Terrace

LA 83 ALTERNATE

**HWY 90 EVACUATION ROUTE
WITH ALTERNATE ROUTES
IN CONSTRUCTION AREA
NEAR NEW IBERIA**

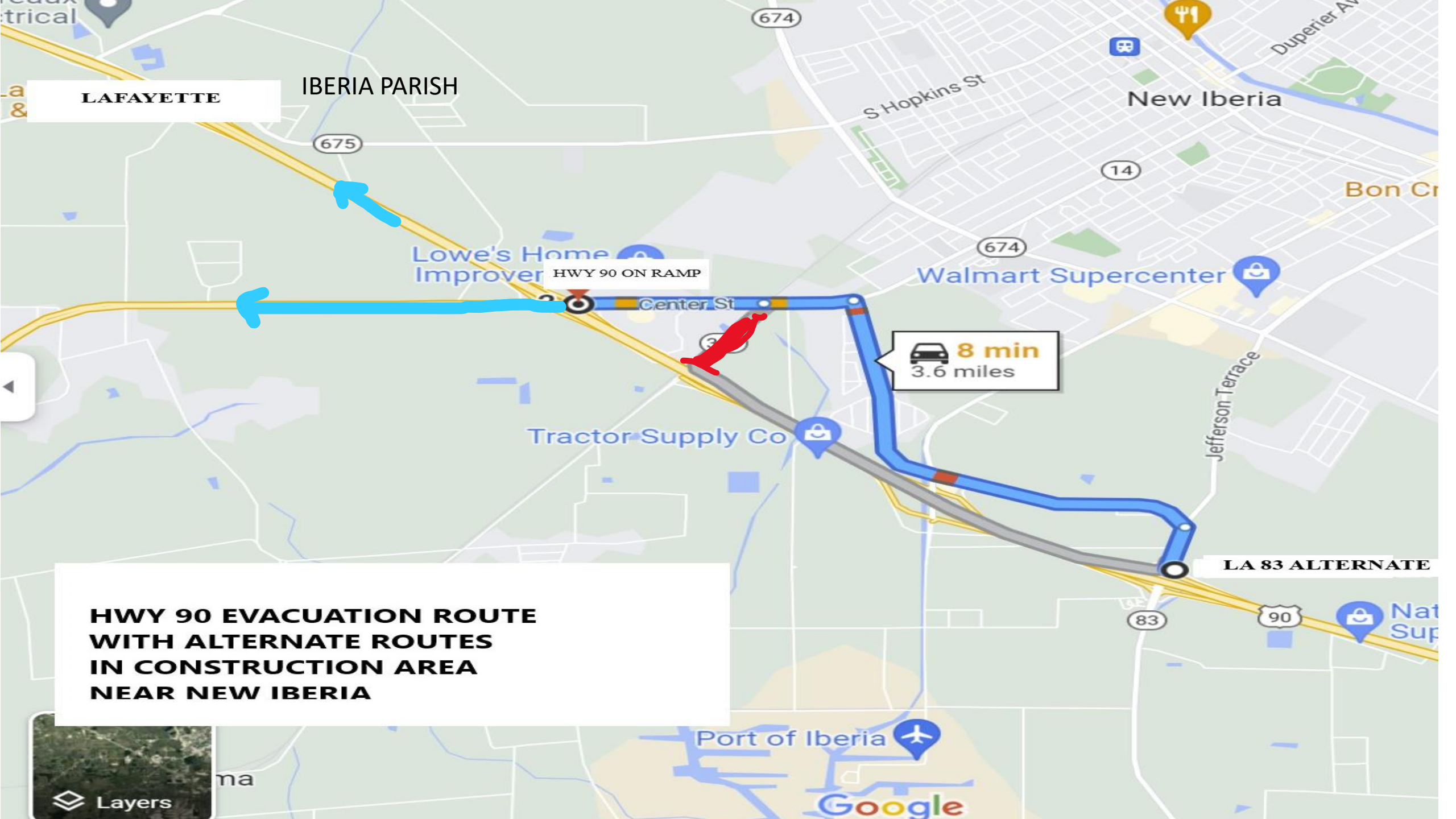
83

90

Port of Iberia

Google

Layers



Guide for Parish Brief

Preparedness Outreach & Messaging	lpaws/code red tv/radio/Facebook/YouTube/ Website, Public meetings
Identified POD Sites	Franklin - Hospital Avenue Morgan city Municipal Auditorium
Identified Debris Sties	1495 Chitimacha Trail Charenton 752 Thorguson Drive Berwick
Commodities on Hand	Sophia water
	MRE;S low sodium
	Tarps
Pre-identified commodity drop sites for rural areas and communities usually local fire depts Who would handle distribution	Charenton, Baldwin, Centerville, Bayou vista, Patterson, Amelia, Cypremort Point, Siracusaville Four Corners
Pre-positioned contracts	Debris and monitoring contract AND SHELTER CONTRACT
	Feeding state contract CATERER
	Generators state contract

SHELTERS

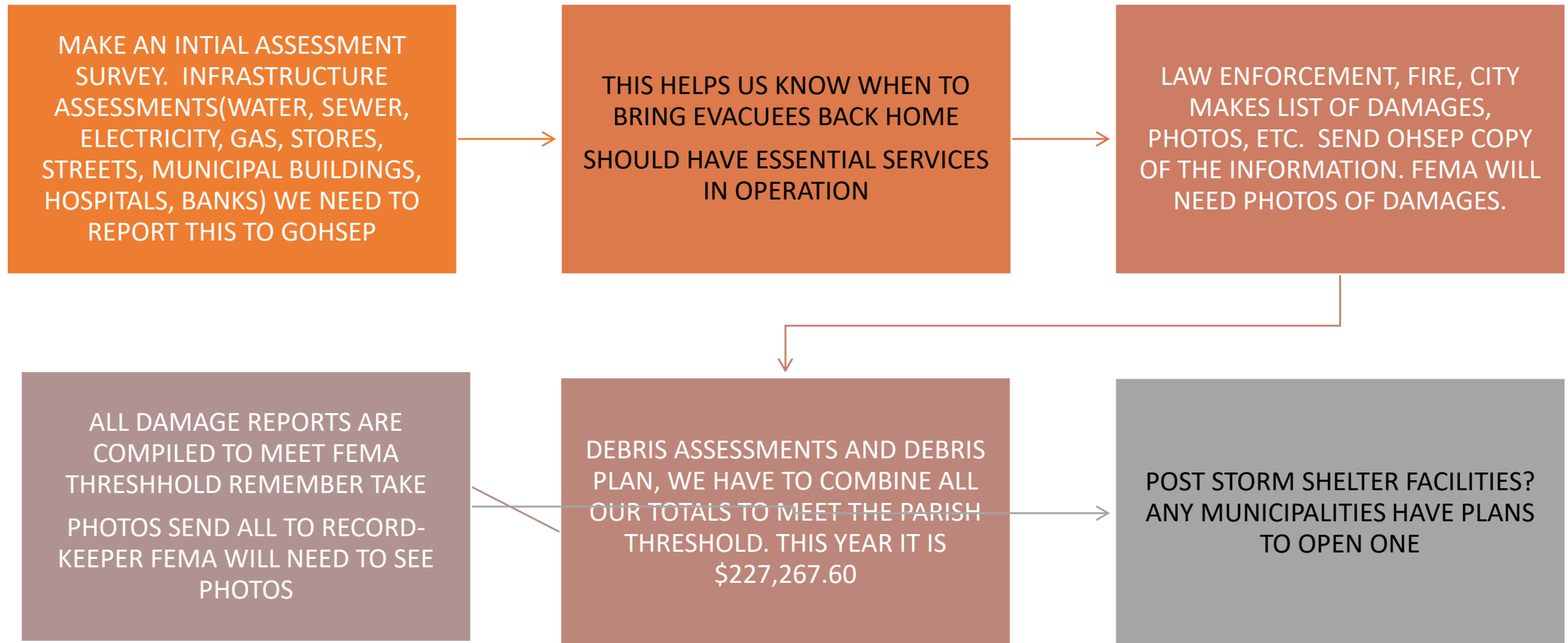
- THERE ARE NO PLANNED PRE STORM-SHELTERS IN THE PARISH
- SHELTERS USED FOR HURRICANE EVACUEES SHOULD BE CONSIDERED AS A **LAST RESORT** OPTION. ST MARY LAST RESORT SHELTER IS IN CENTRAL LOUISIANA.
- **OUR** PLAN IS TO USE LOCAL SCHOOL BUSES AND DRIVERS TO TRANSPORT THOSE THAT REQUIRE TRANSPORTATION TO A SHELTER.
- THERE WILL BE TWO PARISH PICK UP POINTS, **FRANKLIN HIGH AND MORGAN CITY JR HIGH**. CITY ADMIN PERSONNEL, PD, FIRE WILL BE NEEDED TO AID WITH REGISTRATION AND BUS LOADING.

NURSING HOME AND OTHERS SHELTERING PLANS

- NUSING HOME, HOMEBOUND, ETC SHOULD **LEAVE EARLY AS POSSIBLE.** YOU SHOULD FOLLOW YOUR EVAUCATION PLANS
- **LET YOUR FIRE/POLICE KNOW EARLY** SO THEY CAN HELP PREPARE FOR YOUR MOVE AND RETURN. FIRE MARSHALL HAS TO INSPECT BEFORE RETURN IF NEEDED.



POST STORM



TO REPORT DAMAGE TO YOUR
RESIDENCE CAUSED BY
RECENT SEVERE WEATHER,
VISIT **DAMAGE.LA.GOV** OR
SCAN THE QR CODE BELOW.



POST STORM CONT'D

- YOU MAY COME HOME TO NO ELECTRICITY
- YOUR CELL PHONES MAY NOT WORK
- YOUR HOUSE/BUSINESS PHONES MAY NOT WORK
- YOUR GROCERY STORES MAY BE CLOSED
- YOU GAS STATIONS MAY BE EMPTY
- YOU MAY NOT BE ABLE TO GET TO YOUR HOUSE (DEBRIS ETC)
- YOU MAY NOT HAVE DRINKING WATER
- YOU MAY NOT HAVE ELECTRICITY TO PUMP SEWAGE OUT
- YOUR HEALTH CLINICS AND HOSPITAL MAY BE CLOSED
- WAIT FOR YOUR MAYOR, PARISH PRESIDENT TELLS YOU THAT INFRASTRUCTURE IS UP TO COME BACK HOME.
- NURSING HOMES HAVE TO MAKE SURE UTILITIES(WATER/SEWER) ARE BACK UP.