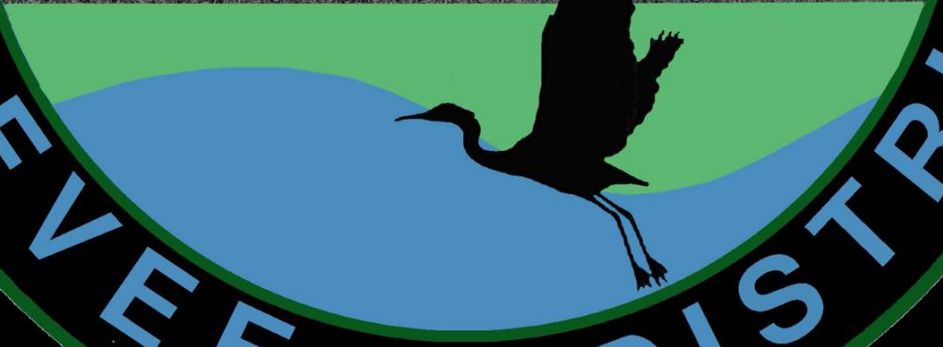


ST. MARY



ST. MARY PARISH

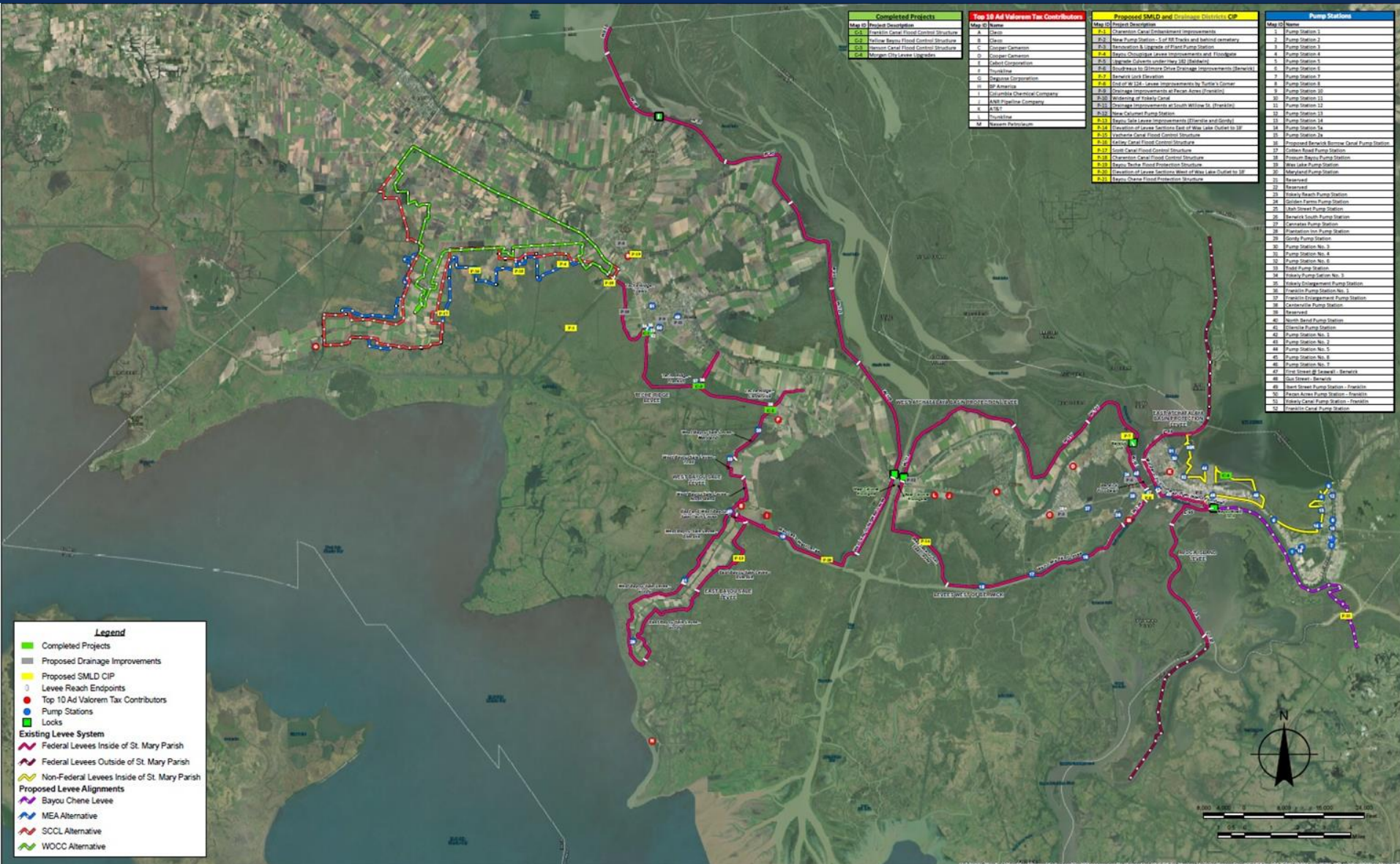
BALDWIN  
FRANKLIN  
BERWICK  
PATTERSON  
MORGAN CITY



LEVEE

DISTRICT

# St. Mary Levee District Base Map



The United States Army Corp of Engineers was authorized by the Flood Control Act of 1928 to execute a comprehensive river management program known as the Mississippi River and Tributaries Project. (MR&T system)

- Levees
- Floodways (Wax Lake Outlet)
- Channel Improvement (Dredging)
- Tributary Basin Improvements:
  - Dams (Old River Control Structure)
  - Pump Stations
  - Reservoirs

#### Historic Crests at Morgan City

1)	10.53 ft	5/28/1973
2)	10.35 ft	5/29/2011
3)	10.06 ft	7/13/2019
4)	8.46 ft	6/27/1957
5)	8.29 ft	3/15/2019
6)	8.20 ft	1/22/2016
7)	8.06 ft	4/05/1997
8)	8.00 ft	2018
9)	7.93 ft	4/13/2020
12)	7.50 ft	2017
	7.26 ft	2020

2019 was the longest period in flood conditions. 235 days.





# Bayou Teche Flood Control Structure



# Yokely Extension











# Franklin Canal

## Floodgate & Pump Station



Philip Luke  
Flood Protection  
Structure



# Hanson Canal







# **Yellow Bayou**

## **Closure and Pump Station**





An aerial photograph of a port area, showing rows of colorful shipping containers, cranes, and a city skyline in the background. The image is partially obscured by a white semi-transparent box containing text.

# Morgan City

## Backwater Protection



**MORGAN CITY LEVEE IMPROVEMENTS - OVERALL PLAN**  
**St. Mary Parish Consolidated Gravity Drainage District No. 2**  
**St. Mary Parish Government,**  
**& St. Mary Levee District**



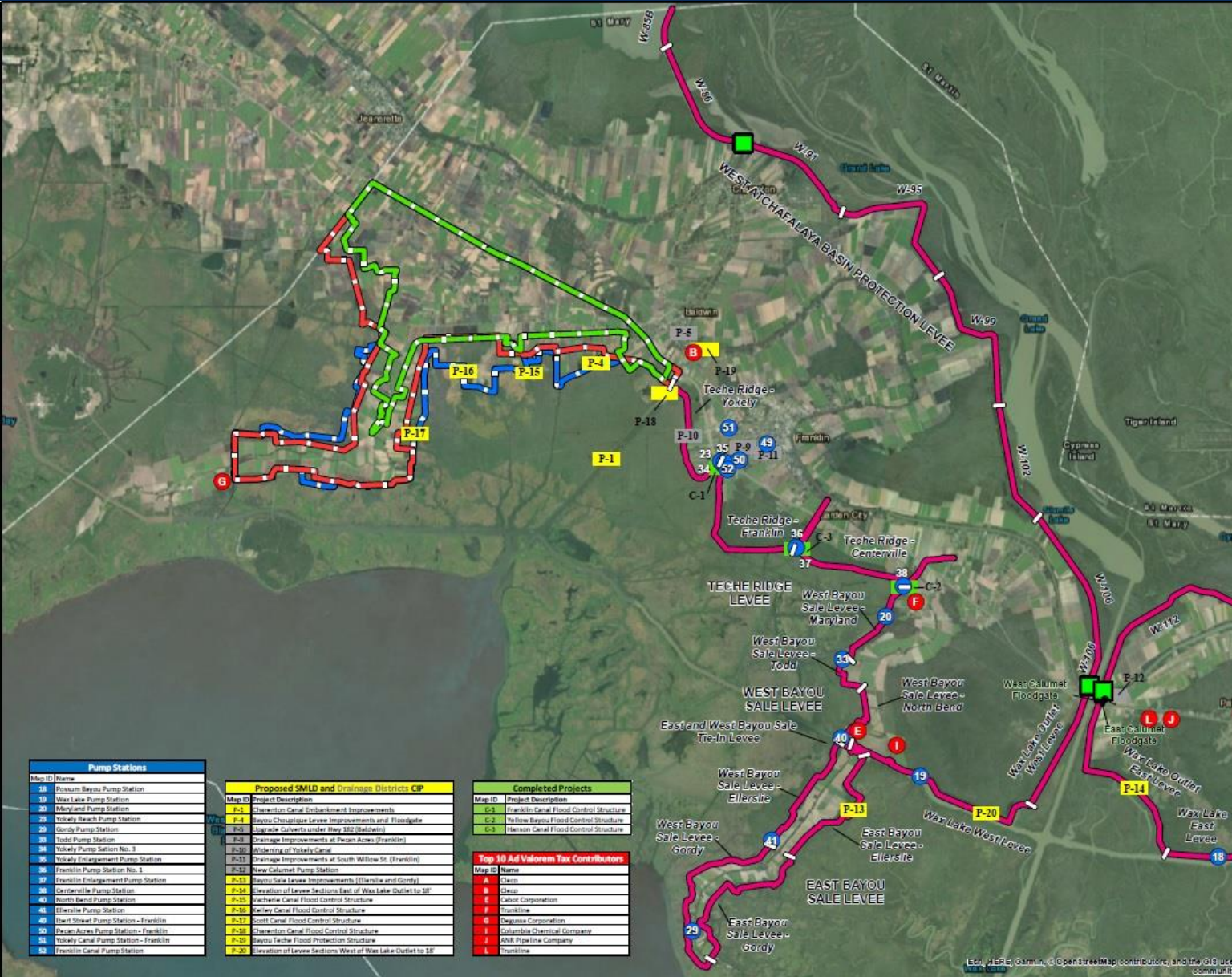


# Bayou Chene

## Floodgate



# St Mary Levee District West Base Map



**Legend**

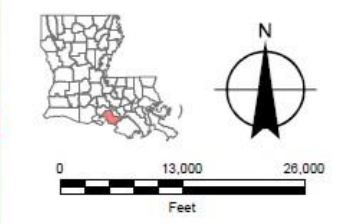
- █ Completed Projects
- █ Proposed Drainage Improvements
- █ Proposed SMLD CIP
- Levee Reach Endpoints
- Top 10 Ad Valorem Tax
- Pump Stations
- Locks

**Existing Levee System**

- Federal Levees Inside of St. Mary Parish

**Proposed Levee Alignments**

- MEA Alternative
- SCCL Alternative
- WOCC Alternative



Map ID	Pump Stations
16	Pecan Acres Pump Station
18	Wax Lake Pump Station
20	Maryland Pump Station
23	Yokely Reach Pump Station
24	Gordy Pump Station
25	Todd Pump Station
26	Yokely Pump Station No. 3
27	Yokely Enlargement Pump Station
28	Franklin Pump Station No. 3
29	Franklin Enlargement Pump Station
30	Centerville Pump Station
31	North Bend Pump Station
32	Ellerslie Pump Station
33	East Shore Pump Station - Franklin
34	Pecan Acres Pump Station - Franklin
35	Yokely Canal Pump Station - Franklin
36	Franklin Canal Pump Station

Map ID	Proposed SMLD and Drainage Districts CIP
P-1	Sharon Canal Embankment Improvements
P-4	Bayou Choquette Levee Improvements and Floodgate Upgrade Culverts under Hwy 282 (Baldwin)
P-5	Drainage Improvements at Pecan Acres (Franklin)
P-8	Widening of Yokely Canal
P-9	Drainage Improvements at South Willow St. (Franklin)
P-10	New Culvert Pump Station
P-11	Bayou Sale Levee Improvements (Ellerslie and Gordy)
P-12	Elevation of Levee Sections East of Wax Lake Outlet to 10'
P-13	Yachew Canal Flood Control Structure
P-14	Yachew Canal Flood Control Structure
P-15	Scott Canal Flood Control Structure
P-16	Sharon Canal Flood Control Structure
P-17	Bayou Teche Flood Protection Structure
P-18	Elevation of Levee Sections West of Wax Lake Outlet to 10'

Map ID	Completed Projects
C-1	Franklin Canal Flood Control Structure
C-2	Franklin Canal Flood Control Structure
C-3	Yachew Canal Flood Control Structure
C-4	Haven Canal Flood Control Structure

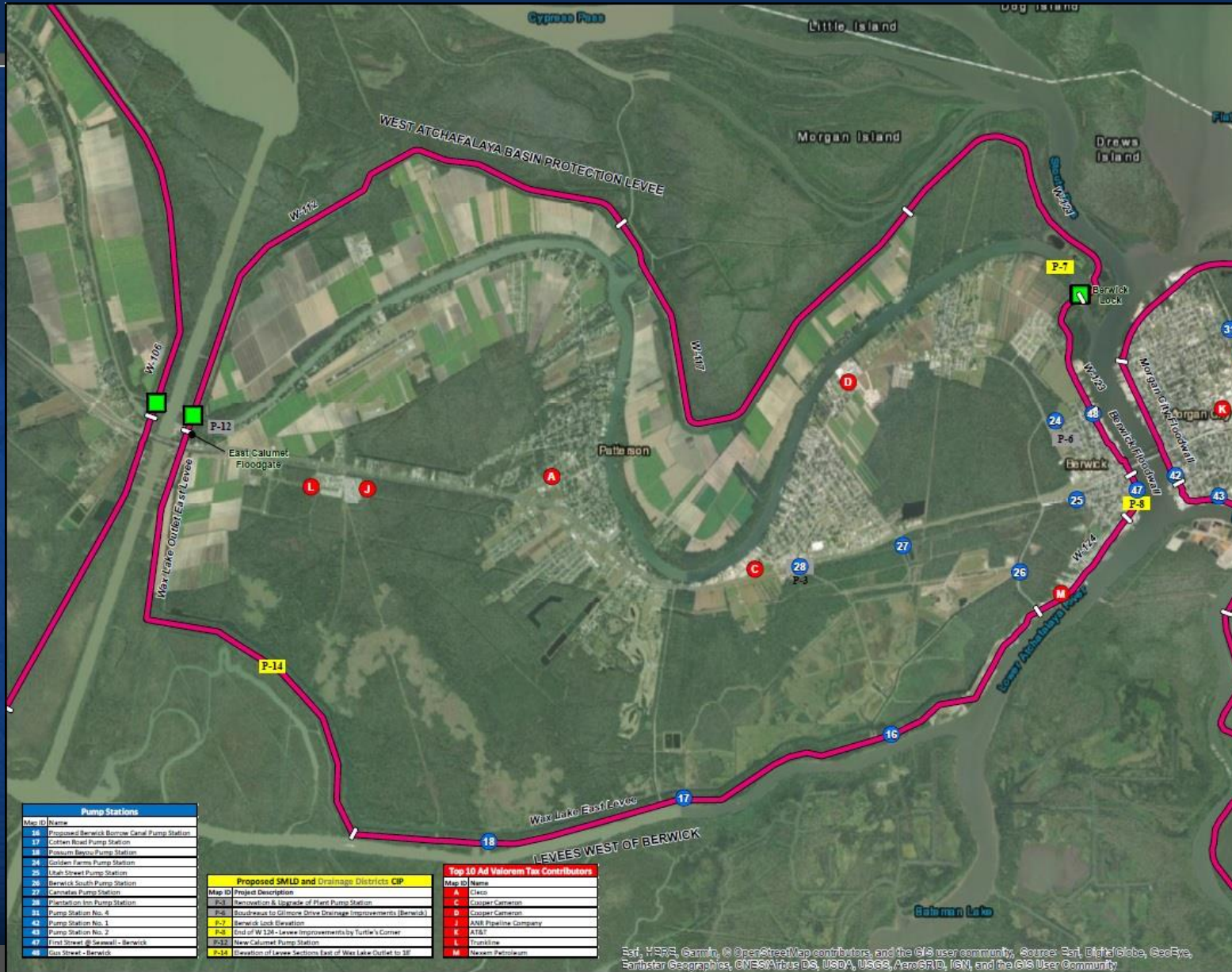
  

Map ID	Top 10 Ad Valorem Tax Contributors
A	Cleco
B	Cleco
C	Cabot Corporation
D	Tronox
E	Devasa Corporation
F	Columbia Chemical Company
G	Devasa Corporation
H	ANR Pipeline Company
I	Frankline

ST. MARY LEVEE DISTRICT

**DRAINAGE DISTRICT 1  
LEVEES, PROPOSED LEVEES,  
AND STRUCTURES**

# St Mary Levee District Central Base Map



### Legend

- Proposed Drainage Improvements
- Proposed SMLD CIP
- Levee Reach Endpoints
- Top 10 Ad Valorem Tax
- Pump Stations
- Locks
- Existing Levee System
- Federal Levees Inside of St. Mary Parish



ST. MARY LEVEE DISTRICT

WAX LAKE EAST LEVEES, PROPOSED LEVEES, AND STRUCTURES



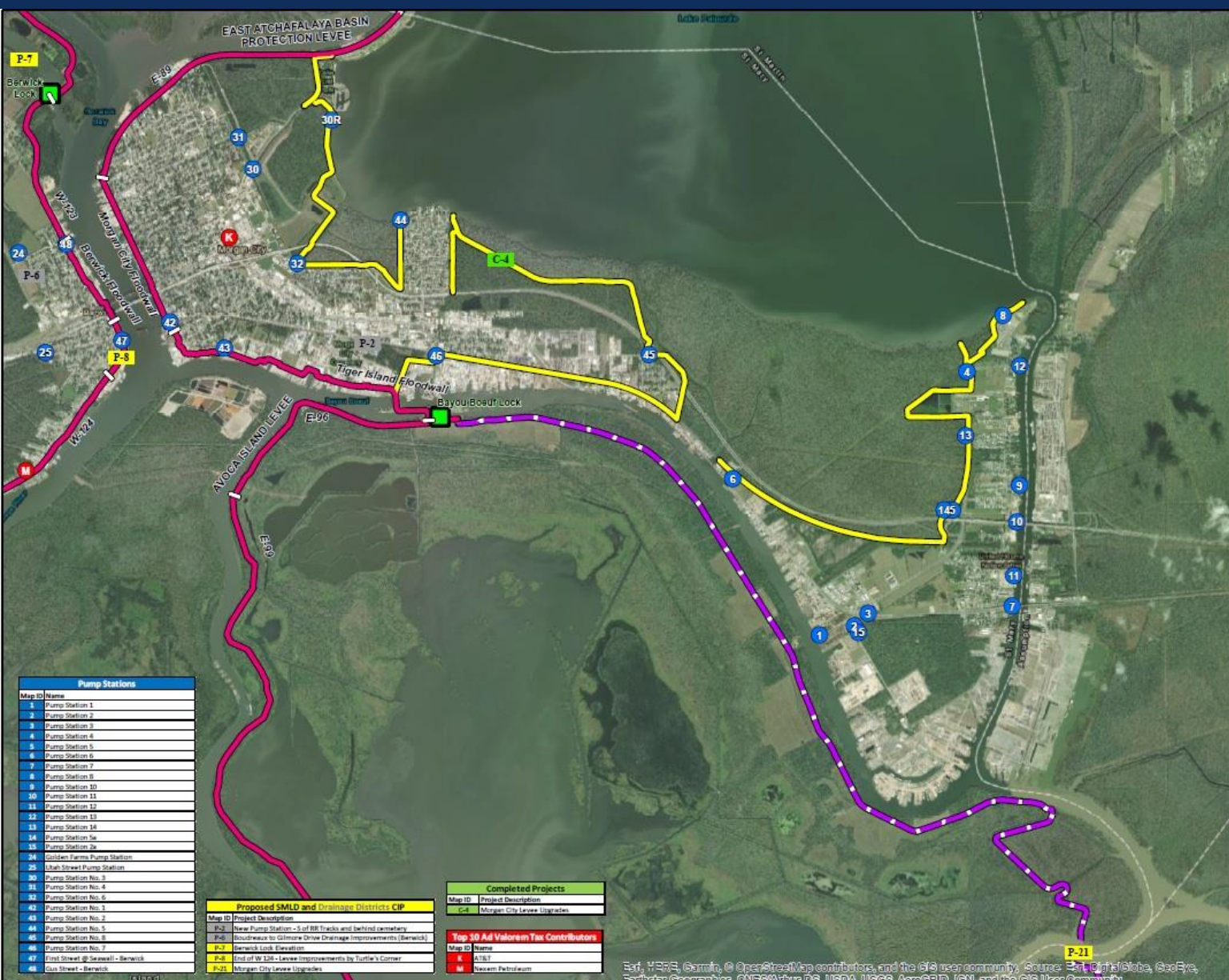
Map ID	Name
34	Proposed Berwick Borrow Canal Pump Station
35	Cochon Road Pump Station
38	Prossum Bayou Pump Station
24	Golden Farms Pump Station
25	Crab Street Pump Station
26	Berwick South Pump Station
27	Carondelet Pump Station
36	Pianon on Inn Pump Station
38	Pump Station No. 4
43	Pump Station No. 1
44	Pump Station No. 2
47	First Street @ Seawall - Berwick
48	Old Street - Berwick

Map ID	Project Description
P-6	Renovation & Upgrade of Plant Pump Station
P-6	Southwest to Gilmore Drive Drainage Improvements (Berwick)
P-7	Berwick Lock Elevation
P-8	End of W-126 Levee Improvements by Turtle's Corner
P-12	New Calumet Pump Station
P-14	Elevation of Levee Sections East of Wax Lake Outlet to 3'

Map ID	Name
A	Chico
C	Cooper-Cameron
D	Cooper-Cameron
E	ANR Pipeline Company
F	AT&T
K	Traskline
M	Newcom Petroleum

Esri, HERE, Garmin, © OpenStreetMap contributors, and the GIS user community. Source: Esri, DigitalGlobe, GeoEye, Earthstar Geographics, CNES/Airbus DS, USDA, USGS, AeroGRID, IGN, and the GIS User Community

# St Mary Levee District East Base Map



## Legend

- Completed Projects
- Proposed Drainage Improvements
- Proposed SMLD CIP
- Levee Reach Endpoints
- Top 10 Ad Valorem Tax
- Pump Stations
- Locks
- Existing Levee System**
- Federal Levees Inside of St. Mary Parish
- Federal Levees Outside of St. Mary Parish
- Non-Federal Levees Inside of St. Mary Parish
- Proposed Levee Alignments**
- Bayou Chene Levee



ST. MARY LEVEE DISTRICT

**DRAINAGE DISTRICTS 2 AND 6  
LEVEES, PROPOSED LEVEES,  
AND STRUCTURES**

Map ID	Name
1	Pump Station 1
2	Pump Station 2
3	Pump Station 3
4	Pump Station 4
5	Pump Station 5
6	Pump Station 6
7	Pump Station 7
8	Pump Station 8
9	Pump Station 9
10	Pump Station 10
11	Pump Station 11
12	Pump Station 12
13	Pump Station 13
14	Pump Station 14
15	Pump Station 15
16	Children Farms Pump Station
17	Shah Street Pump Station
18	Pump Station No. 1
19	Pump Station No. 2
20	Pump Station No. 3
21	Pump Station No. 4
22	Pump Station No. 5
23	Pump Station No. 6
24	Pump Station No. 7
25	Pump Station No. 8
26	Pump Station No. 9
27	Pump Station No. 10
28	Pump Station No. 11
29	Pump Station No. 12
30	Pump Station No. 13
31	Pump Station No. 14
32	Pump Station No. 15
33	Pump Station No. 16
34	Pump Station No. 17
35	Pump Station No. 18
36	Pump Station No. 19
37	Pump Station No. 20
38	Pump Station No. 21
39	Pump Station No. 22
40	Pump Station No. 23
41	Pump Station No. 24
42	Pump Station No. 25
43	Pump Station No. 26
44	Pump Station No. 27
45	Pump Station No. 28
46	Pump Station No. 29
47	Pump Station No. 30
48	Pump Station No. 31
49	Pump Station No. 32
50	Pump Station No. 33
51	Pump Station No. 34
52	Pump Station No. 35
53	Pump Station No. 36
54	Pump Station No. 37
55	Pump Station No. 38
56	Pump Station No. 39
57	Pump Station No. 40
58	Pump Station No. 41
59	Pump Station No. 42
60	Pump Station No. 43
61	Pump Station No. 44
62	Pump Station No. 45
63	Pump Station No. 46
64	Pump Station No. 47
65	Pump Station No. 48
66	Pump Station No. 49
67	Pump Station No. 50
68	Pump Station No. 51
69	Pump Station No. 52
70	Pump Station No. 53
71	Pump Station No. 54
72	Pump Station No. 55
73	Pump Station No. 56
74	Pump Station No. 57
75	Pump Station No. 58
76	Pump Station No. 59
77	Pump Station No. 60
78	Pump Station No. 61
79	Pump Station No. 62
80	Pump Station No. 63
81	Pump Station No. 64
82	Pump Station No. 65
83	Pump Station No. 66
84	Pump Station No. 67
85	Pump Station No. 68
86	Pump Station No. 69
87	Pump Station No. 70
88	Pump Station No. 71
89	Pump Station No. 72
90	Pump Station No. 73
91	Pump Station No. 74
92	Pump Station No. 75
93	Pump Station No. 76
94	Pump Station No. 77
95	Pump Station No. 78
96	Pump Station No. 79
97	Pump Station No. 80
98	Pump Station No. 81
99	Pump Station No. 82
100	Pump Station No. 83
101	Pump Station No. 84
102	Pump Station No. 85
103	Pump Station No. 86
104	Pump Station No. 87
105	Pump Station No. 88
106	Pump Station No. 89
107	Pump Station No. 90
108	Pump Station No. 91
109	Pump Station No. 92
110	Pump Station No. 93
111	Pump Station No. 94
112	Pump Station No. 95
113	Pump Station No. 96
114	Pump Station No. 97
115	Pump Station No. 98
116	Pump Station No. 99
117	Pump Station No. 100

Map ID	Project Description
P-2	New Pump Station - 5 of RR Tracks and behind cemetery
P-6	Roundhouse to Gilmore Drive Drainage Improvements (Berwick)
P-7	Berwick Lock Elevation
P-8	End of RR 12th Levee Improvements by Turle's Corner
P-21	Morgan City Levee Upgrades

Map ID	Project Description
C-4	Morgan City Levee Upgrades

Map ID	Top 10 Ad Valorem Tax Contributors
A	A-T&T
B	Newcom Petroleum

Esri, HERE, Garmin, © OpenStreetMap contributors, and the GIS user community. Source: Esri, DigitalGlobe, GeoEye, Earthstar Geographics, CNRS/Airbus DS, USDA, USGS, AeroGRID, IGN, and the GIS User Community



**Questions??**

**[WWW.SMLD.ORG](http://WWW.SMLD.ORG)**