



# FEMA

## **Daily Operations Briefing**

**Wednesday, August 26, 2020**

**8:30 a.m. ET**

# National Current Operations and Monitoring



FEMA

## **Significant Incidents or Threats:**

- Hurricane Laura
- California Wildfires
- Severe thunderstorms/heavy rain/flooding possible – Texas & Louisiana
- Severe thunderstorms possible – Northern Plains to Lower Great Lakes
- Isolated Dry Thunderstorms – Northwestern States
- COVID-19

## **Tropical Activity:**

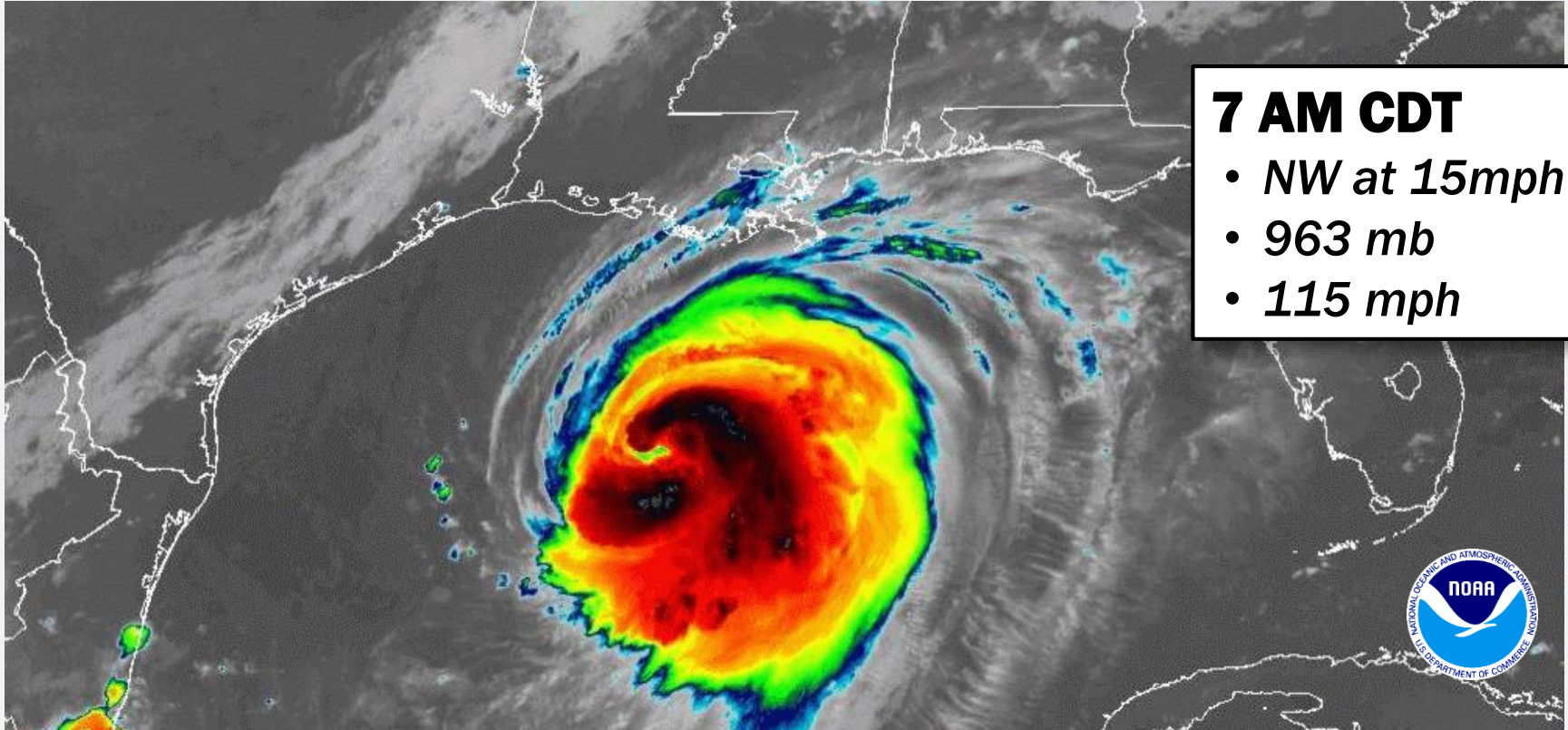
- Atlantic:
  - Hurricane Laura
- Eastern Pacific:
  - Tropical Depression Thirteen-E
  - Disturbance 1: High (90%)
- Central Pacific: No activity affecting U.S. interests
- Western Pacific: No activity affecting U.S. interests

## **Declaration Activity:**

- 3 Amendments issued
- FMAG Approved – Griffin Fire in AZ

# Hurricane Laura

## SATELLITE LOOP



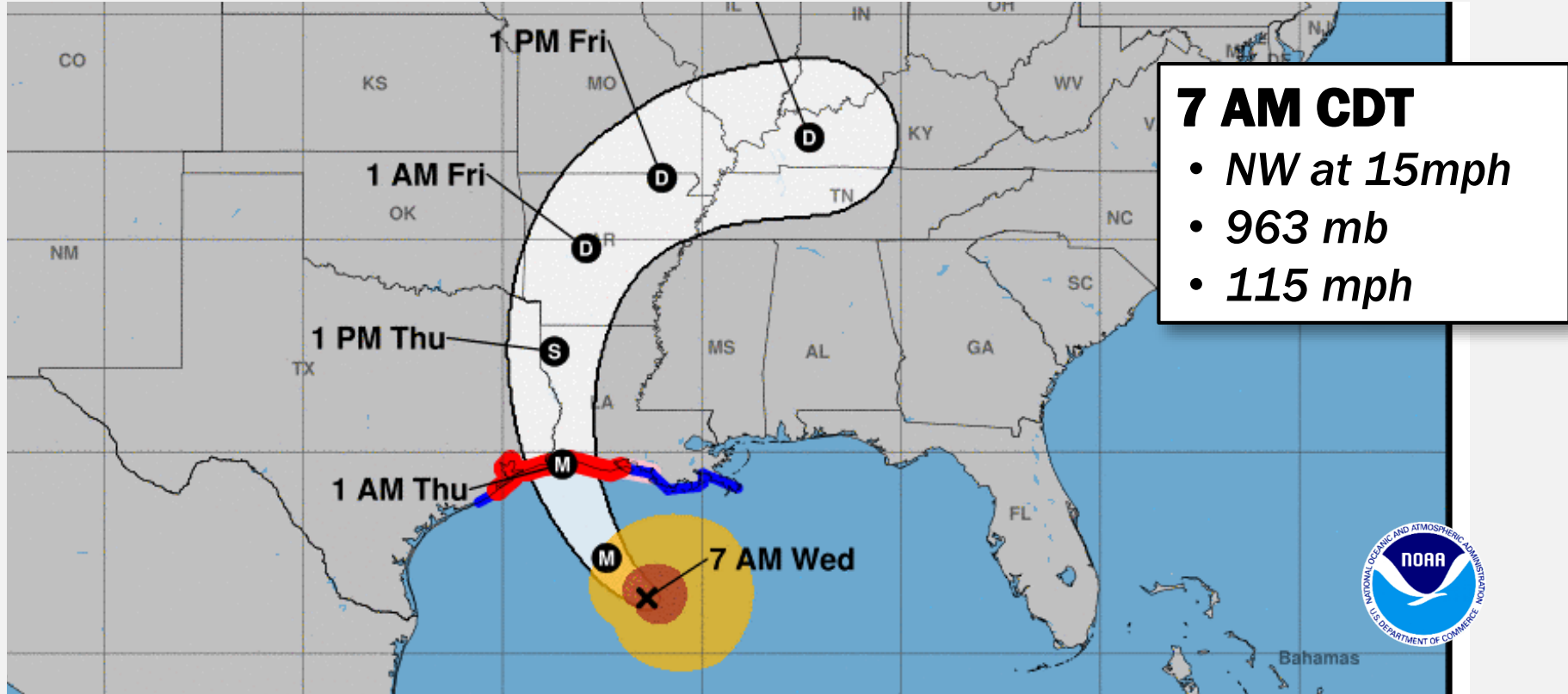
**7 AM CDT**

- *NW at 15mph*
- *963 mb*
- *115 mph*



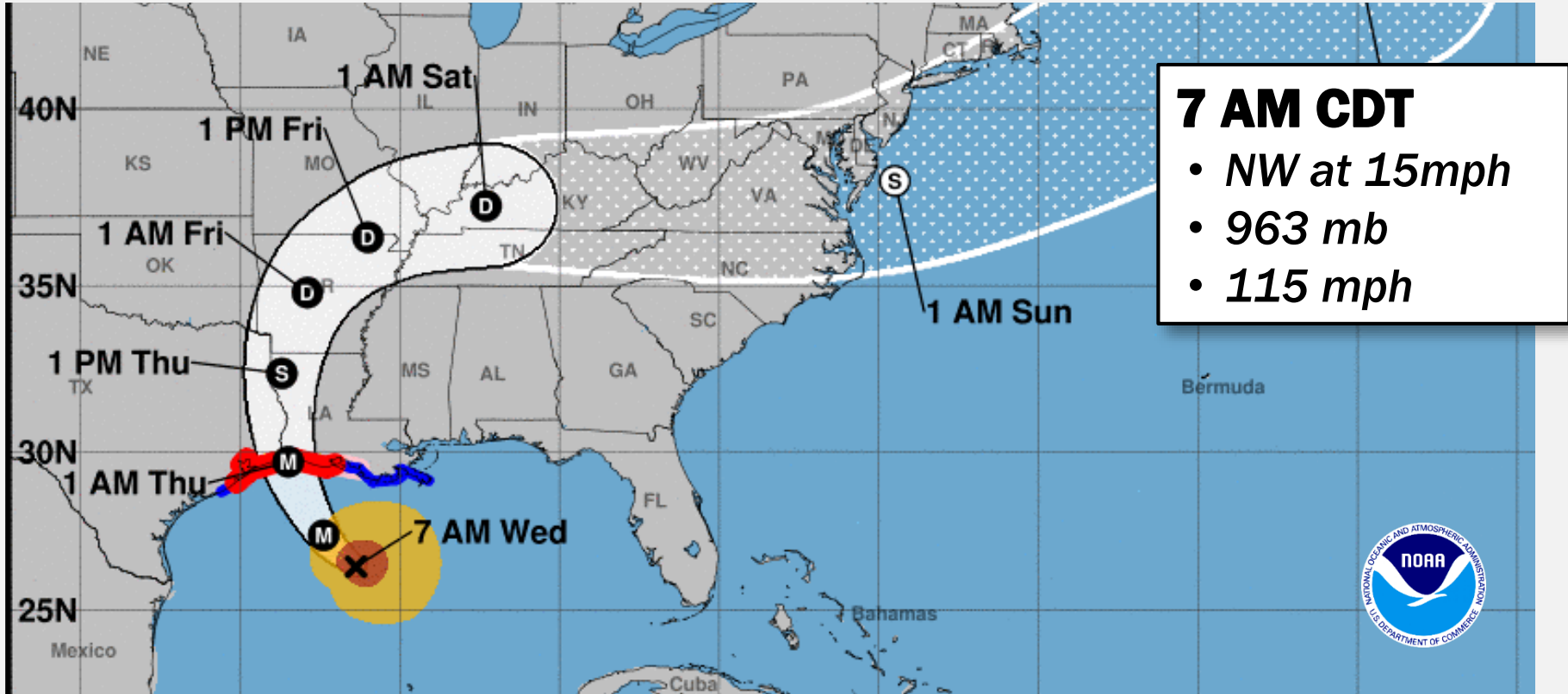
# Hurricane Laura

## FORECAST TRACK



# Hurricane Laura

## FORECAST TRACK



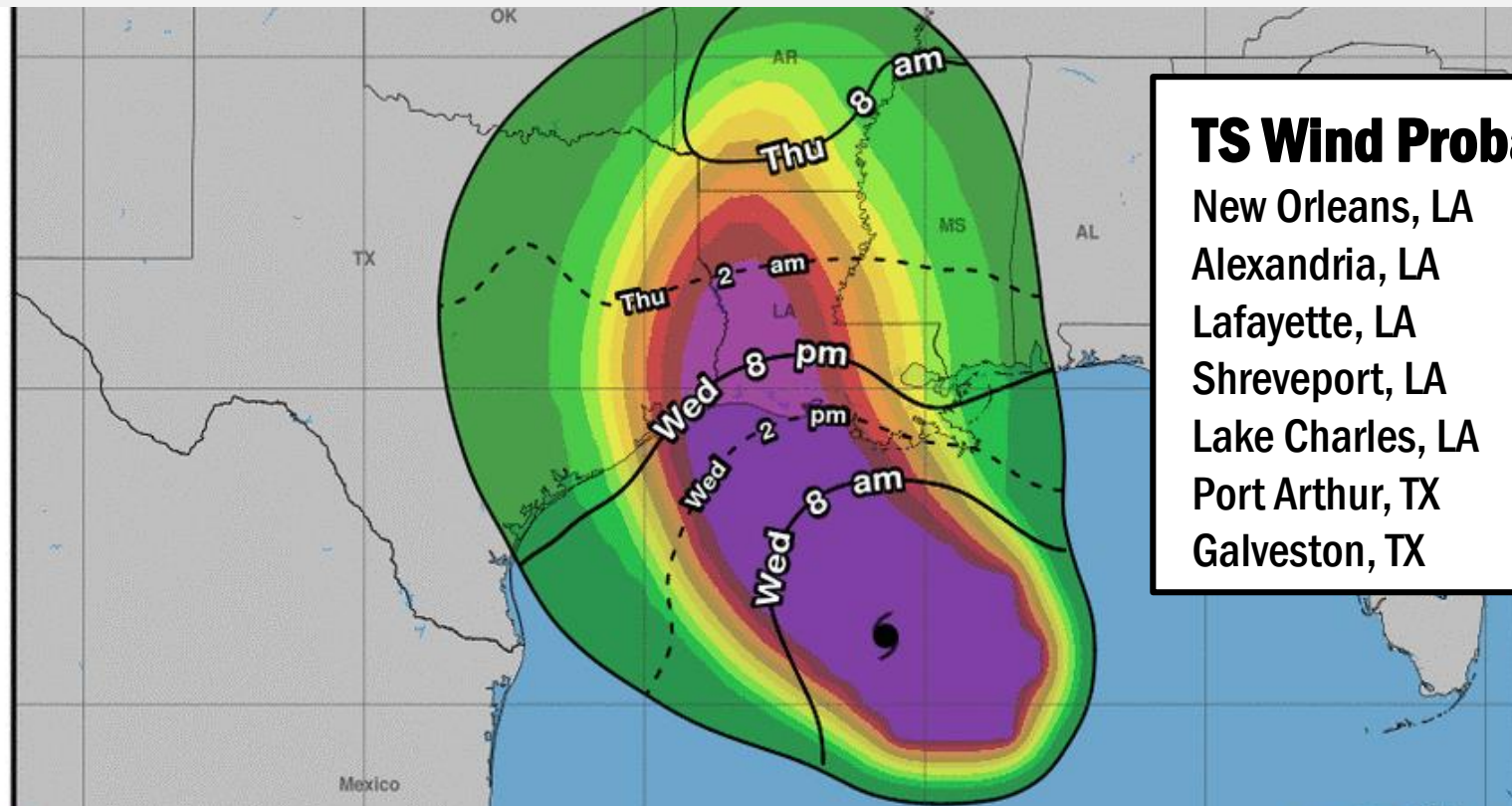


# Hurricane Laura

## MOST LIKELY ARRIVAL OF TS WINDS

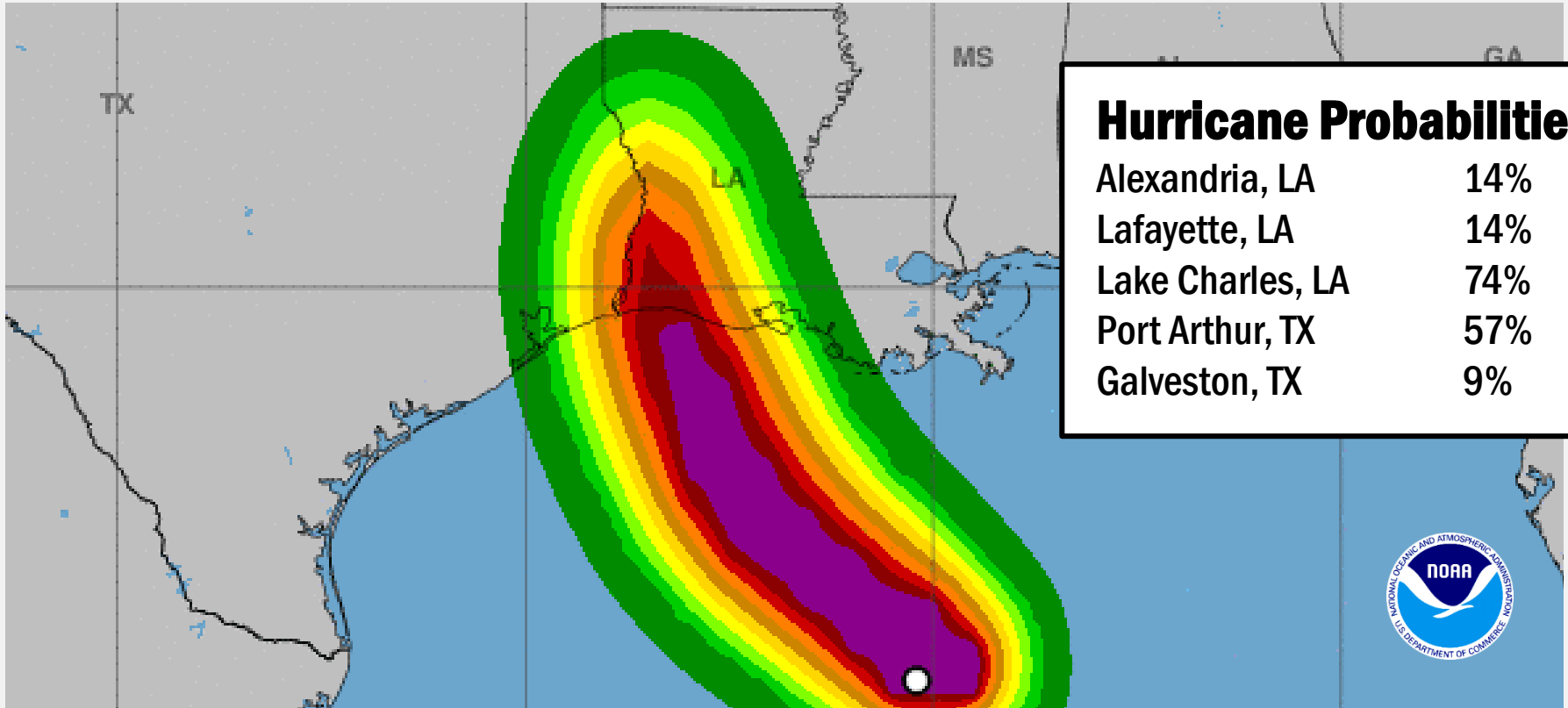
### TS Wind Probabilities

New Orleans, LA	39%
Alexandria, LA	88%
Lafayette, LA	90%
Shreveport, LA	69%
Lake Charles, LA	98%
Port Arthur, TX	94%
Galveston, TX	72%



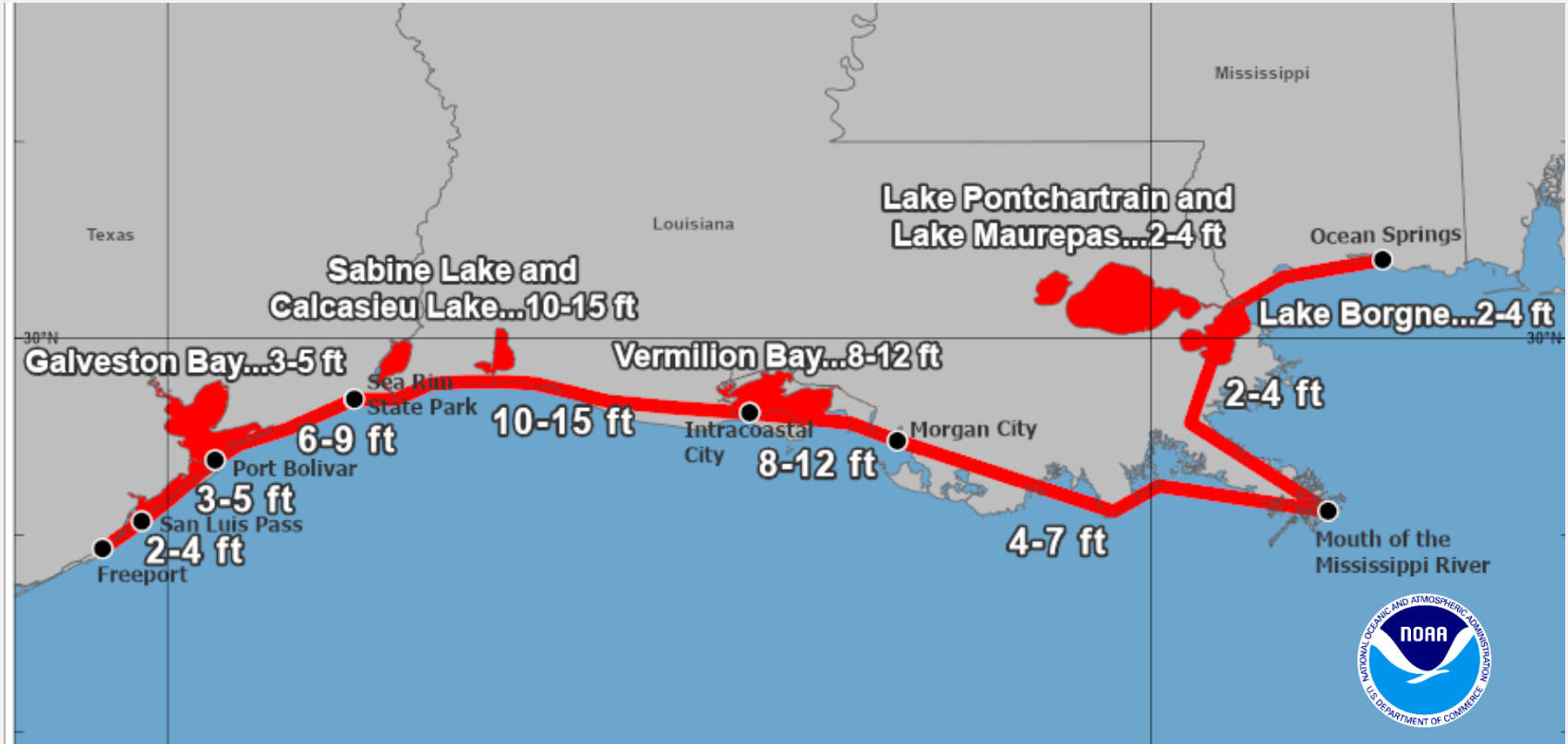
# Hurricane Laura

## HURRICANE WIND PROBABILITIES



# Hurricane Laura

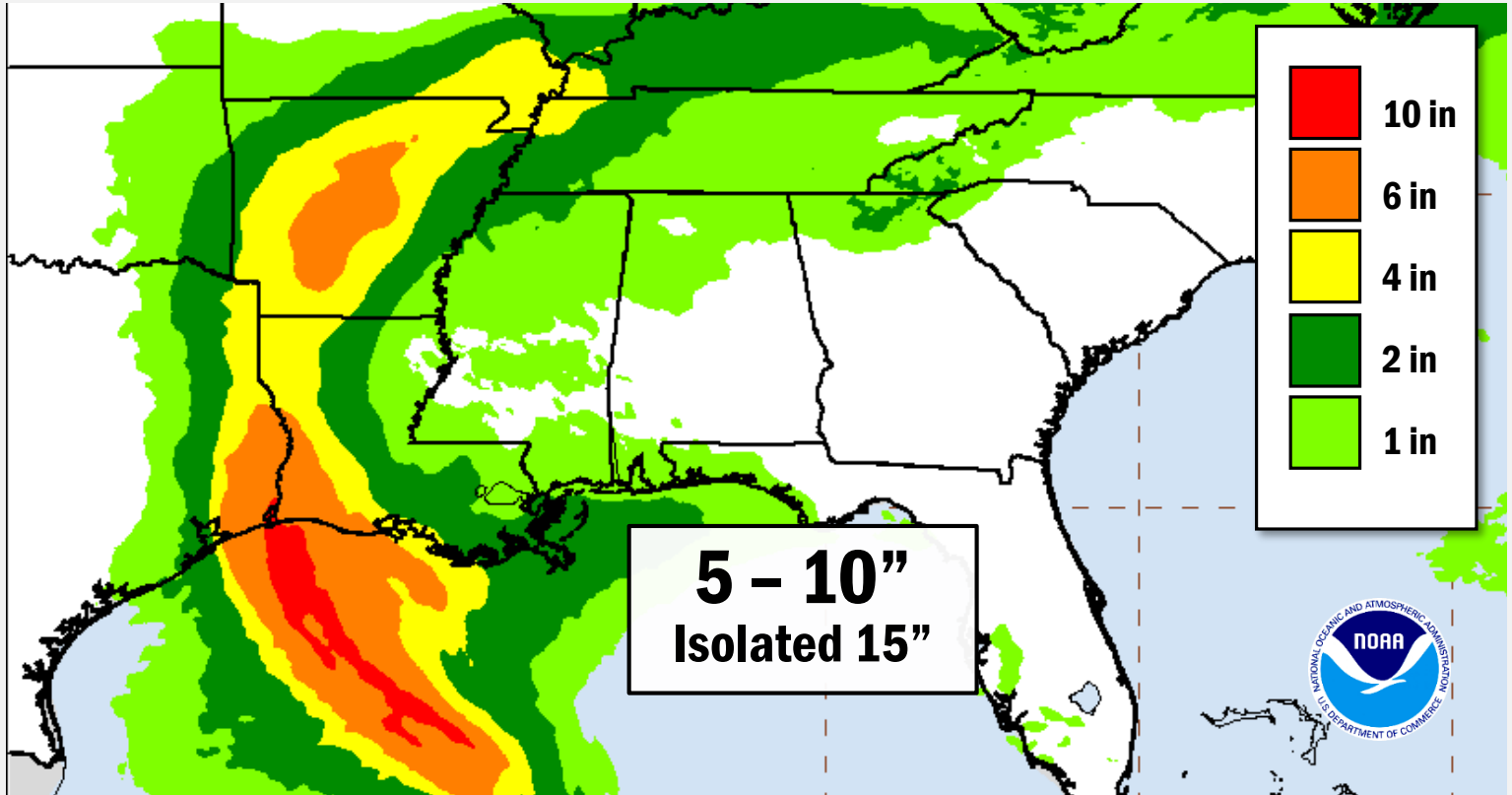
## PEAK STORM SURGE FORECAST





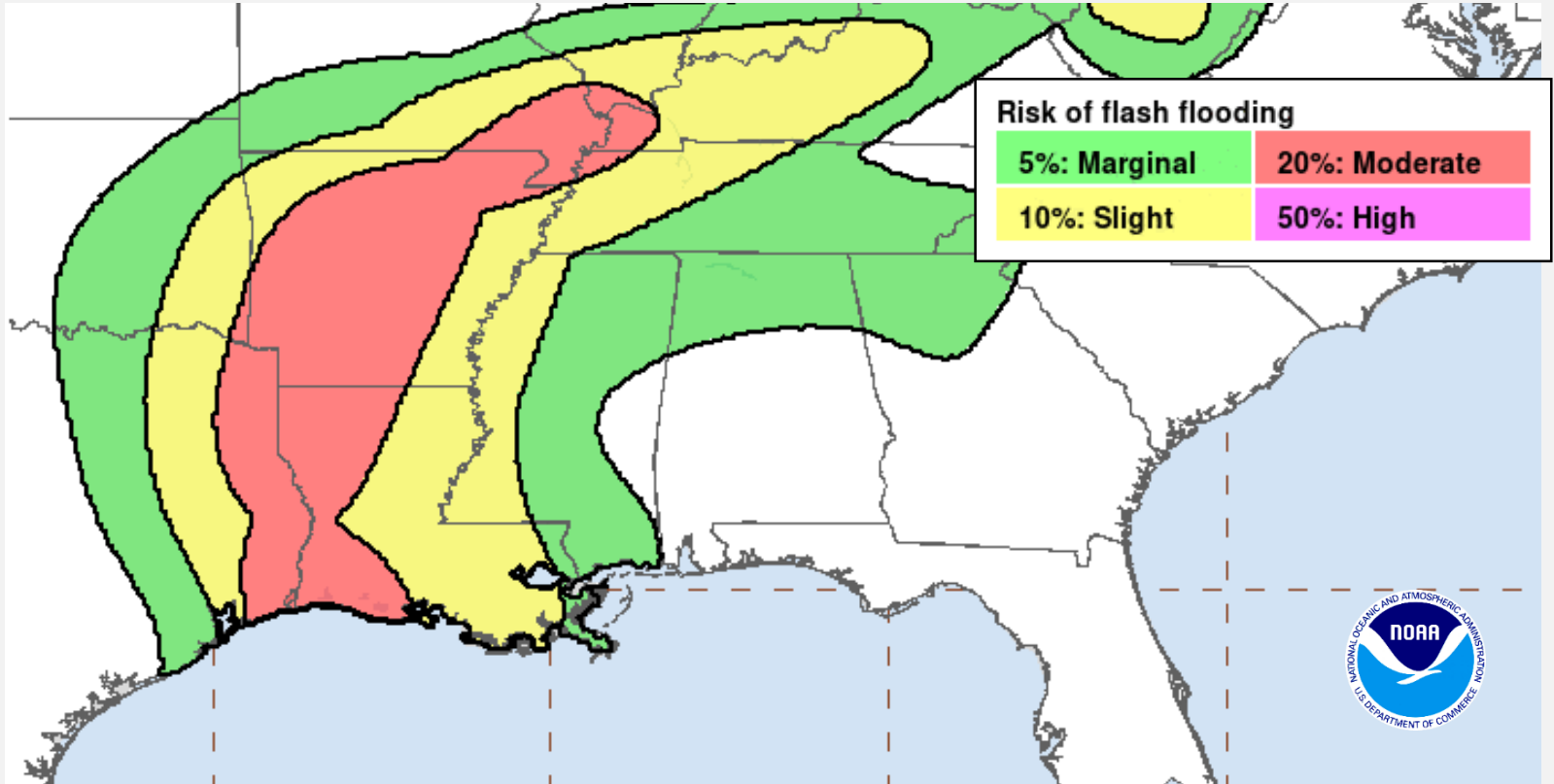
# Hurricane Laura

## 5 DAY RAINFALL



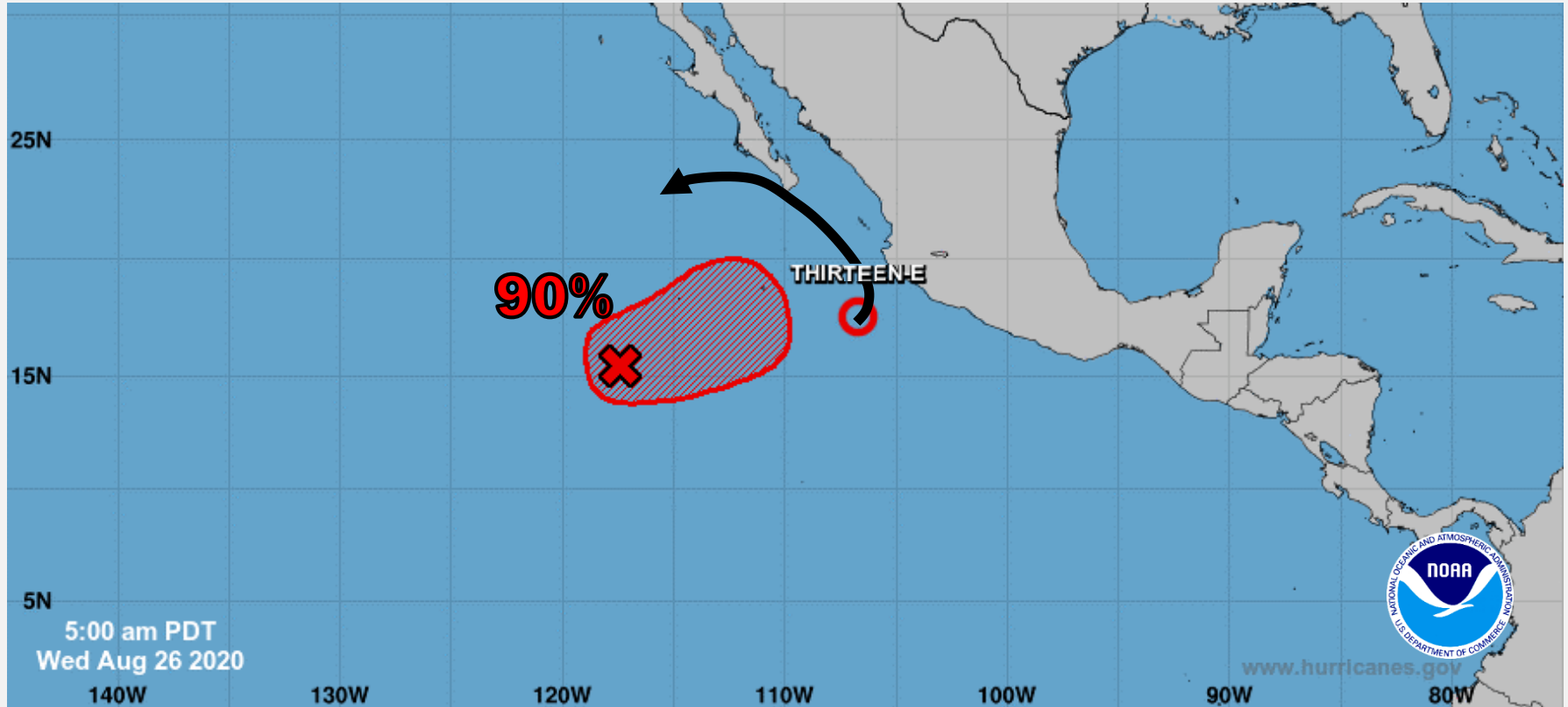
# Hurricane Laura

## FLASH FLOOD POTENTIAL



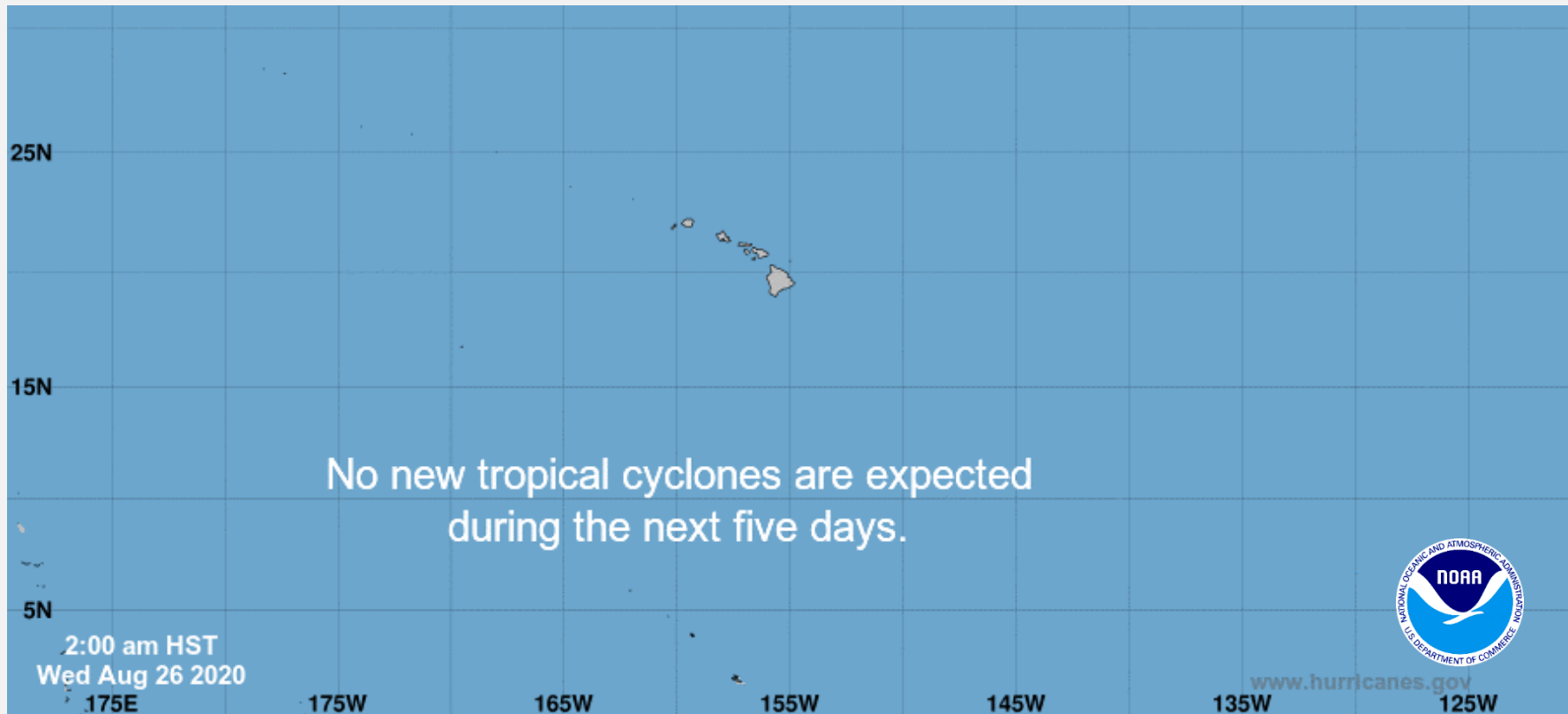
# East Pacific Overview

## TROPICAL OUTLOOK



# Central Pacific Overview

## TROPICAL OUTLOOK



# Tropical Cyclone Laura – Preparations/Response



## Situation:

Hurricane Laura will approach the upper Texas and southwest Louisiana coasts this evening. Further strengthening is expected, with Laura forecast to become a category 4 hurricane prior to landfall.

## Lifeline Impacts

Safety and Security (FEMA NRCC SLB, as of 6:00 a.m. ET, Aug 26)

- LA: Mandatory and voluntary evacuations in effect for 19 parishes
- TX: Mandatory and voluntary evacuations in effect for 5 counties
- TX: Transportation buses staged

Food, Water, Shelter

- LA: 250k meals and 400k liters of water staged in both Roseland and Pineville
- LA, TX, MS: Non-Congregate shelters open; 706 occupants

Health and Medical

- LA: COVID testing sites inoperable until storm passes; Preparing to conduct COVID testing in shelters
- LA: 12 nursing homes evacuated
- TX: 23 nursing homes evacuated
- LA: 50 ambulances on standby
- TX: Ambulances staged; Requesting 50 additional
- LA & TX: Several hospitals are sheltering-in-place

Energy

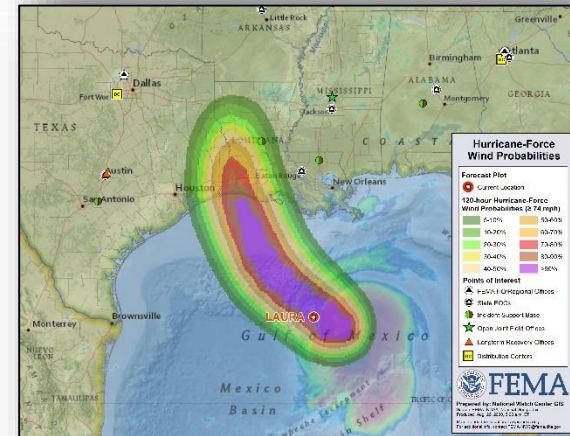
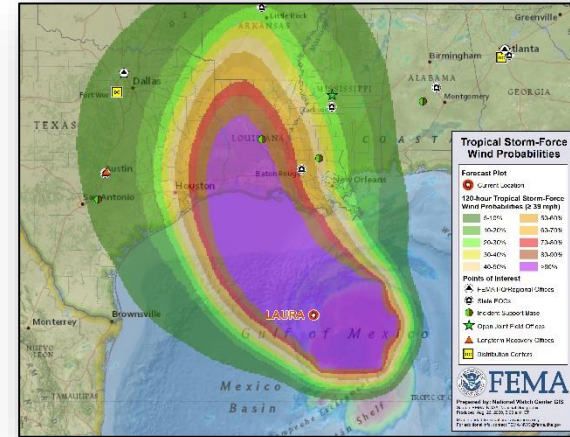
- 82% (+24%) oil & 61% (+16%) natural gas production in the Gulf of Mexico are shut-in
- Refineries across the potentially impacted area have shut-in, fuel stocks in the Gulf Coast remain about the 5-year average
- Due to increased demand from evacuees, some potential for localized fuel disruptions exist

Communications

- TX: AT&T/FIRSTNET staged deployable network to provide cell service to first responders

Transportation

- LA: Ports open to allow vessels to evacuate, anticipating closure of all ports prior to storm arrival
- LA: All New Orleans rail traffic has been cancelled or diverted
- TX: All ports open except Port of Victoria, anticipating closure of all ports prior to storm arrival



# Tropical Cyclone Laura – Preparations/Response



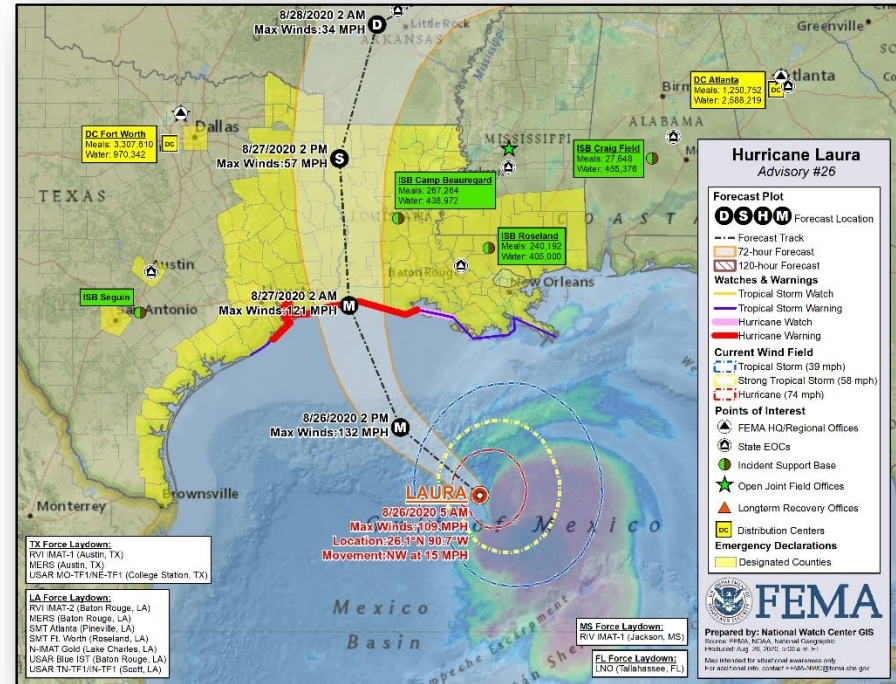
FEMA

## State/Local Preparations/Response:

- MS, LA, & TX EOCs at Partial Activation; State of Emergency declared

## Federal Preparations / Response:

- NRCC at Level I, 24/7 / NWC at Enhanced Watch (RNC Aug 24-27)
  - National IMAT Gold deployed to Lake Charles, LA
- **Regions I and V IMATs on alert**
- Region II RRCC at Level III
  - IMAT deployed to USVI
- Region IV RRCC **Available**
  - IMAT-1 deployed to MS
  - IMAT-2 on standby for AL
  - LNO providing virtual support to MS
  - LNO providing support to Tribal Nations
- Region VI RRCC at Level II with select ESFs
  - IMAT-1 deployed to Austin, TX
  - IMAT-2 deployed to Baton Rouge, LA
- Logistics HQ: Staging Management Team (SMT) Atlanta deployed to Camp Beauregard, LA, SMT Fort Worth deployed to Roseland, LA, and National ISB Team deployed to Craig Field, AL
- MERS deployed to USVI, PR, Baton Rouge, LA, and Austin, TX
  - **Additional MERS assets pre-staged for post storm support in LA**
- US&R Staged in LA and TX
  - TN TF1 & IN TF1 staging in Scott, LA
  - MO TF1 & NE TF1 staged in College Station, TX
- USACE deploying teams to LA & TX
- USCG staged air and watercrafts in AL and LA
- Emergency Declarations approved for PR, LA, MS, and TX





# California Wildfires – Response



## Situation:

There are 367 fires currently burning across CA, **21 (-4) are classified as Major Fires**. 6 have FMAGS approved with a combined 880k acres burned, 82k homes threatened and 1k homes destroyed. **Air Quality Alerts in effect for 11 counties.**

## Lifeline Impacts: (FEMA Region IX Tri-Fold, as of Aug 26)

### Safety and Security

- Evacuations: Mandatory and Voluntary in effect for 19 counties

### Food, Water, Shelter

- Shelters:
  - Congregated: **15** open; **1,329** occupants
  - Non-Congregated: **2,054** occupants in **588** rooms at **39** hotels

### Health and Medical

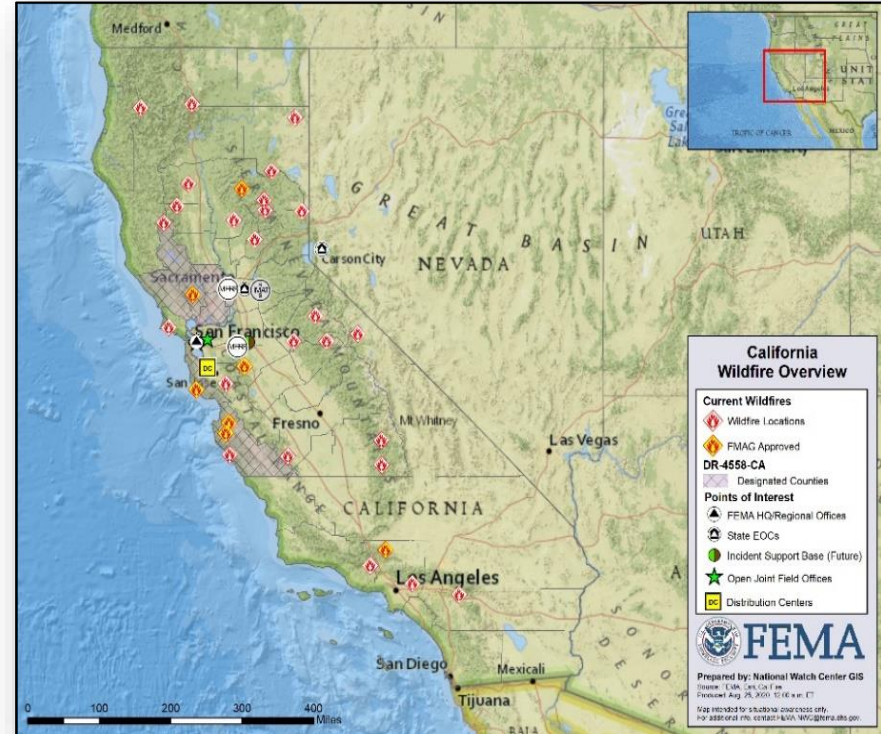
- 6 confirmed fatalities

## State / Local Response:

- State of Emergency declared Aug 19<sup>th</sup>
- CA EOC at Full Activation (Wildfires & COVID-19)

## FEMA Response:

- 6 FMAGS approved statewide
- FEMA-4558-DR-CA approved on Aug 22<sup>nd</sup>
- Region IX IMAT-1 deployed to CA (Wildfires)
- SMT (2) deploying to Sharp Army Depot in Lathrop, CA
- MERS assets deployed to Tracy, CA and enroute to Mather, CA
- NWC and Region IX RWC continue to monitor



# Griffin Fire – AZ



FEMA

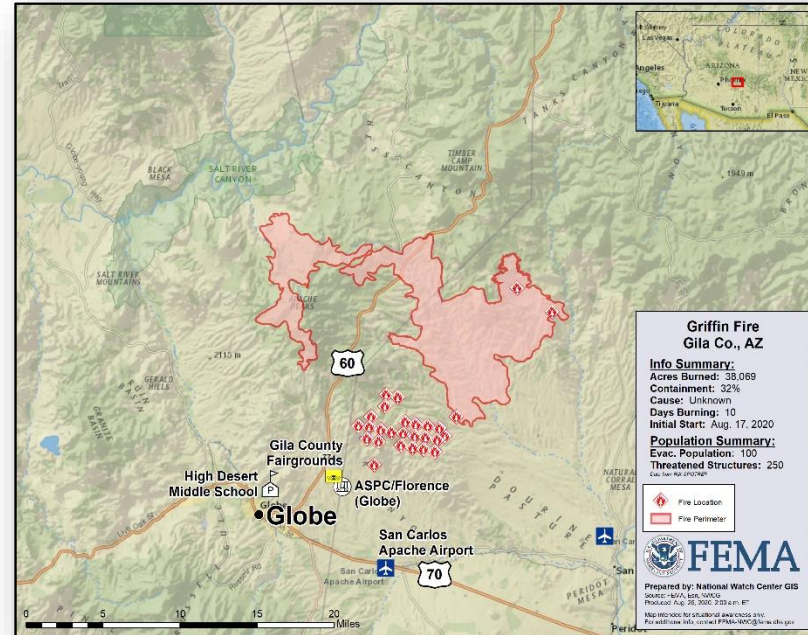
Fire Name (County, ST)	FMAG #	Acres Burned	Percent Contained	Evacuations	Structures (Homes / Other)			Fatalities / Injuries
					Threatened	Damaged	Destroyed	
Griffin Fire (Gila County, AZ)	5340-FM-AZ	38,069	32%	M: 400 V: 0	H: 250 O: 0	H: 0 O: 0	H: 0 O: 0	0 / 0

## Current Situation:

- Fire began August 17 and is burning on Federal and Tribal Land
- 250 homes in and around Globe, AZ, (pop. 7,346) are threatened
- Fire also threatens Globe State Prison, Gila County Fairgrounds, a middle school, Globe Airport, Apache Gold Casino, railways, and water production for towns of Globe and Miami, and a watershed

## Response:

- FMAG approved Aug 26<sup>th</sup>
- Region IX RWC and NWC continue to monitor



# Wildfire Summary



FEMA

Fire Name (County, ST)	FMAG #	Acres Burned	Percent Contained	Evacuations	Structures (Homes / Other)			Fatalities / Injuries
					Threatened	Damaged	Destroyed	
Grizzly Creek Fire (Garfield & Eagle counties, CO)	5334-FM-CO	32,060 (+1,341)	61% (+24%)	M: 0	H: 4,258	H: 0	H: 0	0 / 12 (+2)
				V: 0	O: 1,053	O: 0	O: 3	
River Fire (Monterey County, CA)	5329-FM-CA	48,424	43% (+15%)	M: 579 (-596)	H: 181 (-175)	H: 10 (+2)	H: 13 (+5)	0 / 0
				V: 0	O: 0	O: 2 (+1)	O: 17 (+4)	
LNU Lightning Fire Complex (Napa County, CA)	5331-FM-CA	356,326 (+4,509)	27% (+2%)	M: 79,917	H: 30,000	H: 210	H: 716 (+1)	4 / 5
				V: 0	O: 500	O: 46 (+12)	O: 262 (+78)	
Carmel Fire (Monterey County, CA)	5333-FM-CA	6,695	40% (+20%)	M: 1,525	H: 462	H: 6 (+1)	H: 50 (+15)	0 / 0
				V: 0	O: 0	O: 1 (-6)	O: 23 (+7)	
CZU Lightning Fire Complex (Santa Cruz and San Mateo counties, CA)	5336-FM-CA	79,640 (+956)	19% (+6%)	M: 77,832	H: 24,323 (-987)	H: 30 (+9)	H: 319 (+111)	1 / 0
				V: 0	O: 0	O: 13 (+2)	O: 124 (+62)	
SCU Lightning Fire Complex (Santa Clara and Stanislaus counties, CA)	5338-FM-CA	365,772 (+5,717)	20% (+5%)	M: 6,323	H: 20,000	H: 6 (+1)	H: 18 (+6)	0 / 5
				V: 0	O: 65	O: 0	O: 13 (+13)	
Sheep Fire – CA (Lassen County, CA)	5339-FM-CA	27,411 (+1,837)	3% (+3%)	M: 1,000 (+700)	H: 2,040 (-260)	H: 1	H: 9 (+1)	0 / 0
				V: 0	O: 155 (-40)	O: 0	O: 17 (+2)	
Griffin Fire – AZ (Gila County, AZ)	5340-FM-AZ	38,069	32%	M: 400	H: 250	H: 0	H: 0	0 / 0
				V: 0	O: 0	O: 0	O: 0	

(Evacuations: M = Mandatory / V = Voluntary  
Structures: H = Homes and Mixed Commercial/Residential / O = Non-residential Commercial/Other Minor Structures)

# COVID-19 Update



FEMA

**Situation:** Upward trajectory in COVID-19 case count continues across 4 (-1) states, with 3 (-2) states in a plateau status, and 49 (+3) states on a downward trajectory.  
22,683 (-238) Federal employees deployed / activated;  
1,983 (+37) FEMA employees deployed.

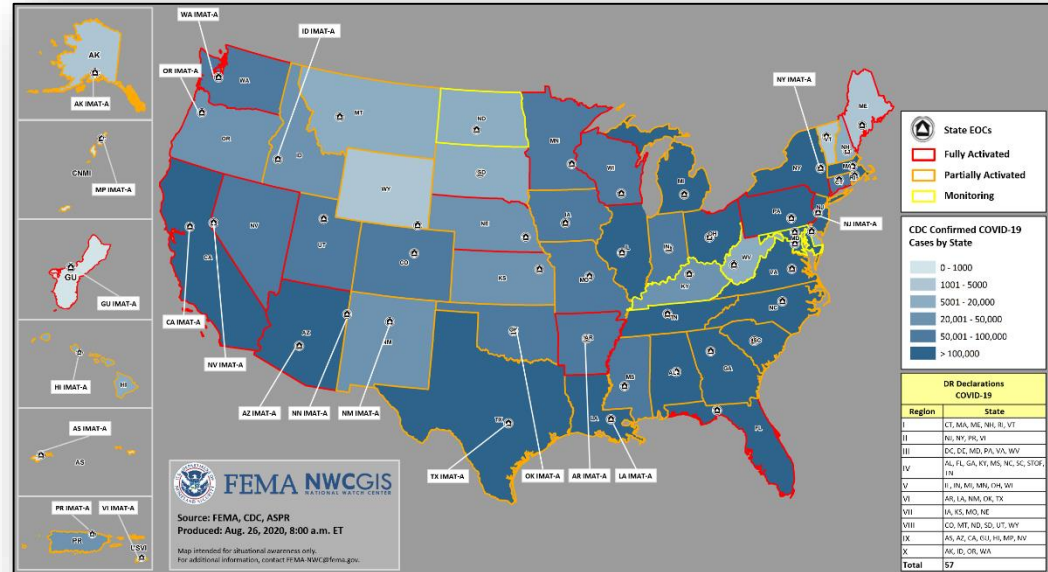
Nationwide Testing: 78,005,897 (+2,352,658) cumulative as of Aug 25

COVID-19 positive cases continue to increase globally (CDC COVID-19 update as of Aug 25)

- Confirmed Cases of COVID-19
  - United States: 5,715,567 (+33,076)
  - Worldwide: 23,518,343 (+461,055)
- Deaths caused by COVID-19
  - United States: 176,617 (+394)
  - Worldwide: 810,492 (+9,586)

## Response:

- NRCC at Level I
- Region VI RRCC is at Level II
- Regions I, II, III, V, & X RRCCs at Level III
- Regions IV, VII, VIII, & IX RRCCs are rostered
- Regions VII, VIII & IX COVID-19 response being worked from the Virtual JFO
- NWC, all RWCs, and MOCs are monitoring







# Flood Hazard Outlook (Prototype)

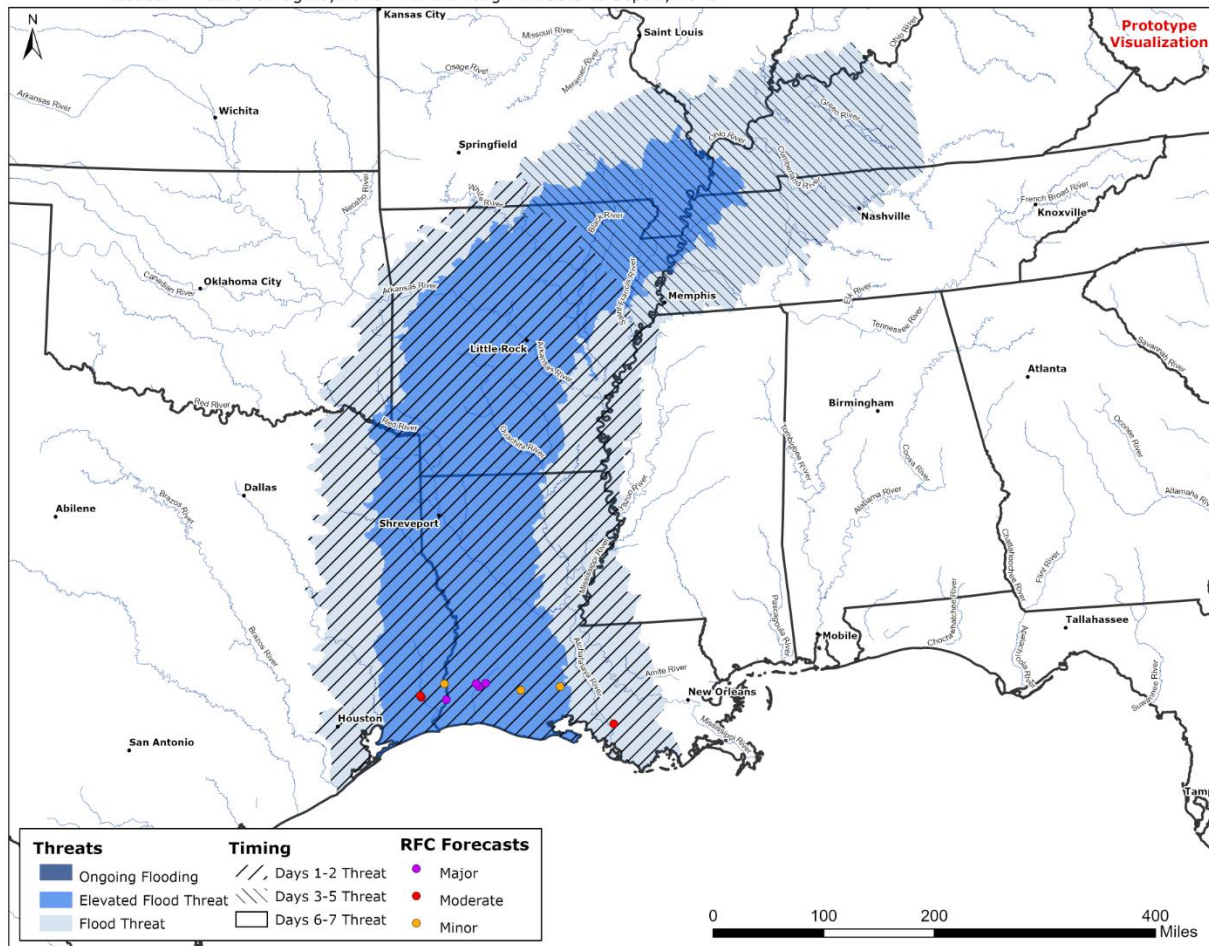
## Includes General Flash and River Flood Hazards

Issued: 11:30 UTC Aug 26, 2020 - Valid through 11:30 UTC Sept 2, 2020

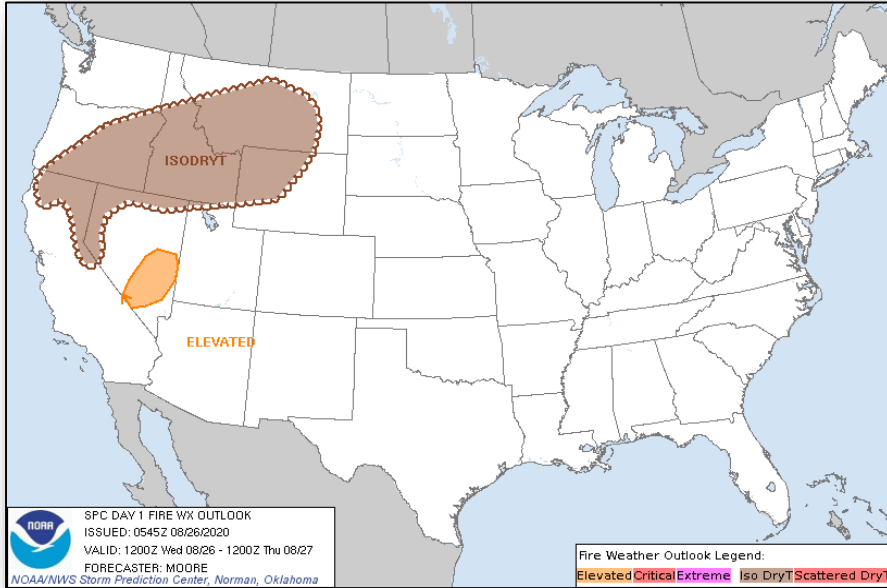
### Flood Hazard Messages (associated with Hurricane Laura)

- The National Hurricane Center (NHC) is forecasting life-threatening storm surge along the east Texas and western Louisiana coasts.
- Rainfall from Laura is expected to impact east Texas through central Louisiana this afternoon and move northward into eastern Oklahoma and Arkansas on Thursday.
- From east Texas through central Louisiana and into Arkansas, expected rainfall storm totals of 5 to 10 inches, with isolated maximum amounts of 15 inches, will cause widespread flash and urban flooding, small streams and creeks to overflow their banks, and minor to isolated moderate freshwater river flooding.
- Current River Forecast Centers (RFC) forecasts shown on this map account for water that is forecast to push up the rivers due to storm surge.
- Friday into Saturday, rainfall totals of 2 to 4 inches, with isolated maximum amounts of 6 inches are likely across the mid-Mississippi and portions of the Lower Ohio and Lower Tennessee Valleys as tropical moisture from Laura moves through the region. This rainfall may lead to localized flash and urban flooding and rapid rises on small streams.
- Interests in the aforementioned regions should continue to monitor their local National Weather Service forecast and ensure they have their flood plan in place.

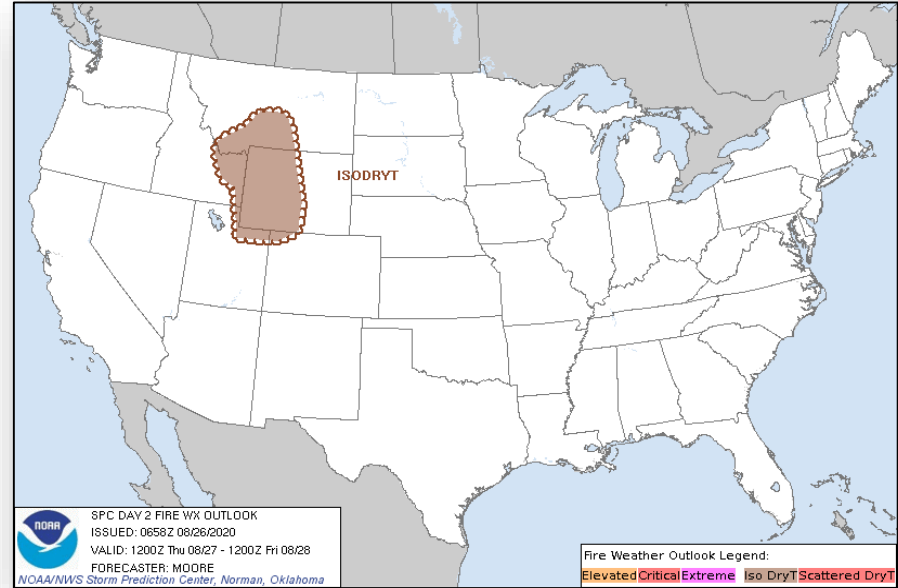
**Disclaimer:** This graphic is intended to provide a general flash and river flood hazard outlook. It is not intended to depict coastal flood risk due to storm surge. Please refer to the detailed products issued by local National Weather Service offices for official forecasts and warnings. [www.weather.gov](http://www.weather.gov)



# Fire Weather Outlook



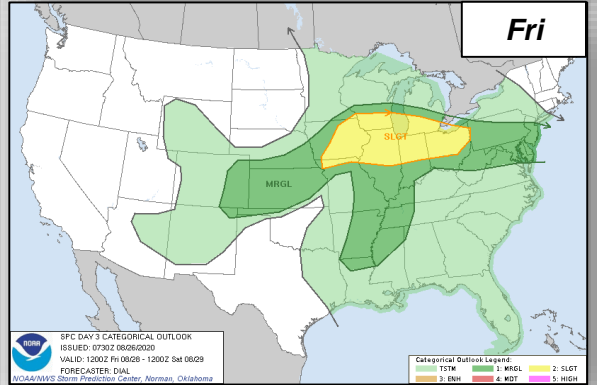
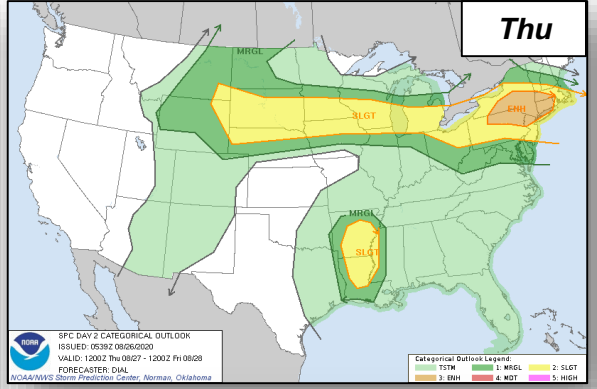
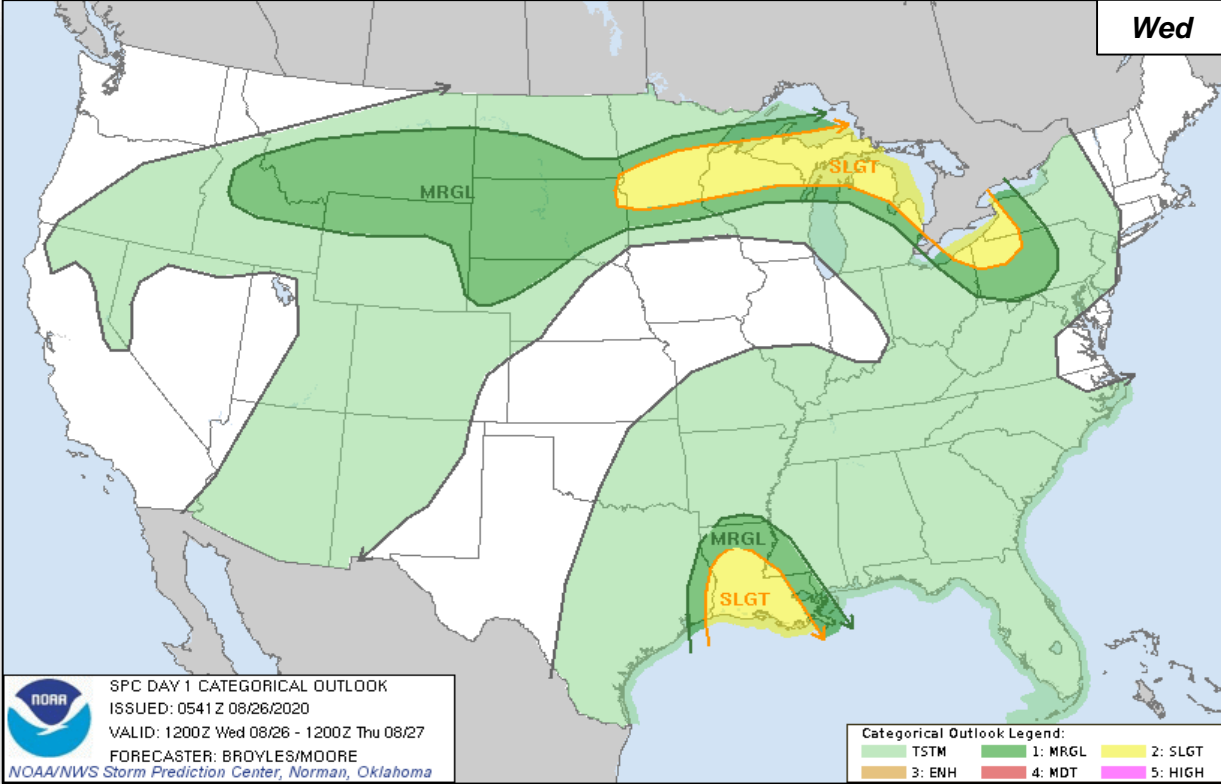
*Today*



*Tomorrow*



# Severe Weather Outlook



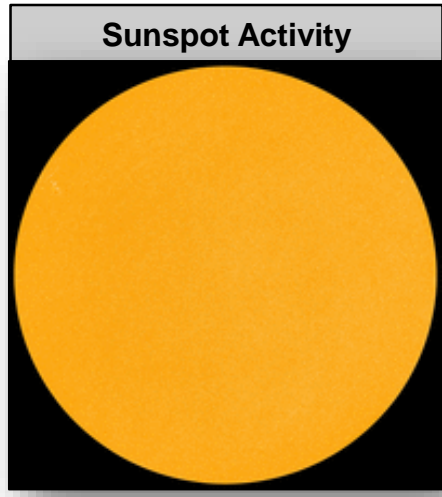
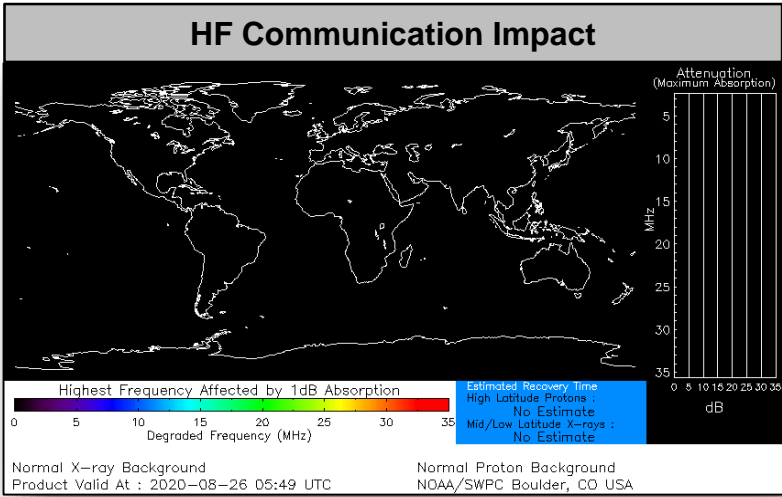
# Space Weather



FEMA

	Space Weather Activity	Geomagnetic Storms	Solar Radiation	Radio Blackouts
Past 24 Hours	None	None	None	None
Next 24 Hours	None	None	None	None

For further information on NOAA Space Weather Scales refer to: <http://www.swpc.noaa.gov/noaa-scales-explanation>  
 For further information on Sun Spot Activity refer to: <https://www.swpc.noaa.gov/phenomena/sunspotssolar-cycle>



# Joint Preliminary Damage Assessments



FEMA

Region	State / Location	Event	IA/PA	Number of Counties		Start – End
				Requested	Complete	
I	CT	Tropical Storm Isaias Aug 4, 2020	IA	8	0	TBD
			PA	8	0	TBD
II	NY	Tropical Storm Isaias Aug 4, 2020	IA	0	0	TBD
			PA	8	0	8/25 – TBD
III	DE	Tropical Storm Isaias Aug 4-5, 2020	IA	2	0	8/20 – TBD
			PA	3	0	8/20 – TBD
III	MD	Tropical Storm Isaias Aug 4-5, 2020	IA	0	0	N/A
			PA	5	0	8/21 – TBD
IV	NC	Hurricane Isaias Aug 3, 2020	IA	0	0	N/A
			PA	14	0	8/18 – TBD
VI	TX	Hurricane Hanna Jul 25, 2020 and continuing	IA	6	6	7/29 – 8/20
			PA	6	0	7/29 – TBD
VII	IA	Derecho Aug 10, 2020 and continuing	IA	27	0	8/15 – TBD
			PA	16	0	8/15 – TBD

# Declaration Requests in Process – 5



FEMA

State / Tribe / Territory – Incident Description	Type	IA	PA	HM	Requested
Poarch Band of Creek Indians – COVID-19 Pandemic	DR	X	X		May 15
LA – Severe Storm and Tornadoes	DR		X	X	Jul 10
Sac & Fox Tribe of the Mississippi of Iowa – Severe Weather	DR	X	X	X	Aug 14
Puerto Rico – Tropical Storm Isaias	DR	X			Aug 21
Florida – Tropical Storm Laura	EM		X		Aug 21

# Declaration Amendments



FEMA

Declaration	Number	Issued	Action
FEMA-3538-EM-LA	1	Aug 25	Amended to include reimbursement for eligible emergency protective measures for 34 parishes
FEMA-3540-EM-TX	1	Aug 25	Amended to include reimbursement for eligible emergency protective measures for 23 counties
FEMA-3540-EM-TX	2	Aug 25	Amendment provides emergency protective measures (Category B), including direct Federal assistance, under the Public Assistance program for 36 counties

# FEMA Common Operating Picture

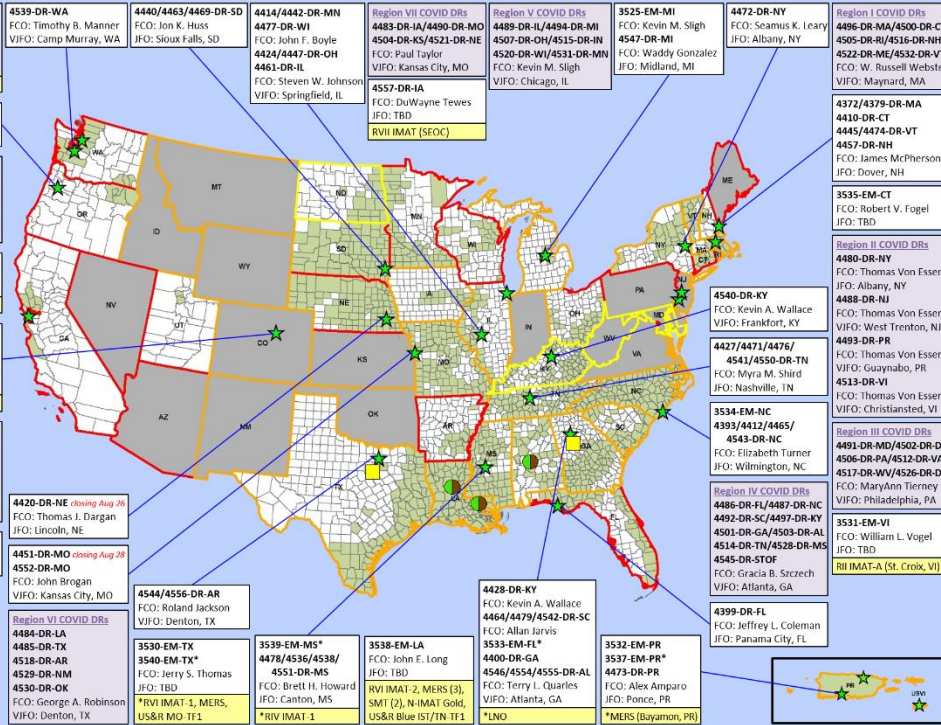


FEMA

FEMA HQ		
<b>NWC</b>	<b>NRCC</b>	
Enhanced	Level I	
FEMA REGIONS		
<b>WATCH</b>	<b>RRCC</b>	
Monitoring	I	Level III
Monitoring	II	Level III
Monitoring	III	Level III
Monitoring	IV	Rostered
Monitoring	V	Level III
Monitoring	VI	Level II
Alt. Location	VII	Rostered
Monitoring	VIII	Rostered
Monitoring	IX	Rostered
Monitoring	X	Level III

**Major Disasters (DR): 110**  
**Emergency Disasters (EM): 107**  
 ★ JFOs: 10 / VJFOs: 16  
 🌟 Staging Area  
 📍 Distribution Center (DC)  
 🏠 Declared County (non-COVID-19 Declarations)  
 🚩 Fully Activated  
 🟡 Partially Activated  
 🟠 Monitoring

As of 8:00 a.m. ET August 26, 2020  
 Created by FEMA NWC



**Notes:**

- NRCC / RRCCs activated for COVID-19
- CT: Isaias
- PR: Earthquakes & TC Laura
- CA: Wildfires
- IA: Derecho
- AL, FL, MS, LA, TX: TC Laura
- All EOCs activated for COVID-19
- Region IV: RNC
- Region VI: TC Laura

N-IMATs	
2-3 Teams	
Red	On Alert
Blue	LA
Gold	LA
R-IMATs	
4-6 Teams	
I	1 (Alert)
II	USVI
III	
IV-1	MS
IV-2	
V	2 (Alert)
VI-1	TX
VI-2	LA
VII	IA
VIII	(3) VJFO
IX-1	CA
IX-2	
X	RRCC
FMC	PMC
NMC	Deployed

Team:	US&R	MERS	FCOs	FDRCs	IM WORKFORCE
Status	33%-65%	>66%	≤1 Type I	= 2	
Assigned:	28	36	47 (-1)	10	13,864 ▲
Unavailable	10 (-1)	0	3	0	2,853 ▲
Deployed:	4 (+4)	4 (-2)	40 (-1)	8	5,794 ▲
Available:	14 (-3)	32 (+2)	4	2	5,217 / 38% ▼

IM CADRE AVAILABILITY SUMMARY	
Cadres with 25% or Less Availability	
EHP 20% (132/659); FL 18% (29/158); FM 21% (52/246); LOG 24% (318/1,322); OPS 16% (52/319); PA 22% (698/3113); PLAN 20% (92/460); SAF 15% (8/55)	





# FEMA

**FEMA's mission is helping people before, during, and after disasters.**

Click [here](#) to subscribe to this briefing  
[FEMA.GOV](https://www.fema.gov)