



# PORT MORGAN CITY 2025 Hurricane Season Preparedness

Tim Osborn  
NOAA



# End of the 2024 Hurricane Season



## 2024 Atlantic Tropical Cyclone Names

~~Alberto~~  
~~Beryl~~  
~~Chris~~  
~~Debby~~  
~~Ernesto~~  
~~Francine~~  
~~Gordon~~

~~Helene~~  
~~Isaac~~  
~~Joyce~~  
~~Kirk~~  
~~Leslie~~  
~~Milton~~  
~~Nadine~~

~~Oscar~~  
~~Patty~~  
~~Rafael~~  
~~Sara~~  
Tony  
Valerie  
William

Names provided by the World Meteorological Organization

Be prepared: Visit [hurricanes.gov](https://hurricanes.gov) and follow @NWS and @NHC\_Atlantic on X.

November 2024

The storm's 225 fatalities — combined with 45 deaths from Hurricane Beryl, 10 from Hurricane Debby and 24 from Hurricane Milton — place 2024 behind only 2017 and 2005 for total U.S. hurricane fatalities in the modern era, NOAA said. Only Maria, which struck Puerto Rico in 2017, killing more than 2,900, and Katrina, which killed more than 1,800 in Louisiana and Mississippi in 2005, were deadlier, according to NOAA statistics.

"We lost a very disheartening number of lives with Helene, and we learned important lessons from that disaster," including about how to better communicate storm risk, said Jamie Rhome, deputy director of NOAA's National Hurricane Center.

### Hurricanes, storms cost US \$500 billion this year: Analysis

<https://thehill.com/policy/energy-environment/691104-hurricane-losses-accweather/>



(AP Photo/Dave Bazilian)

Homes destroyed by Hurricane Milton are seen in Grove City, Fla., Saturday, Oct. 12, 2024.

Since 2017 (save for 2019), We Have Faced and Responded to a Major Category Hurricane Landfall Across the Gulf Coast Every Year



## NOAA Coast Survey NSD- NRB and Nav Managers



# A Constant Effort of Engagement- Charting Needs, Growth of Ports, Storm Season Preparedness



Season. Thank you.



**NWS - Lake Charles - Joe Rua** 12:39 PM

Tim, currently there is a La Nina Advisory in effect, so yes we are now in La Nina. The current projection has a 55% chance of being in a Neutral Phase come the start of hurricane season.

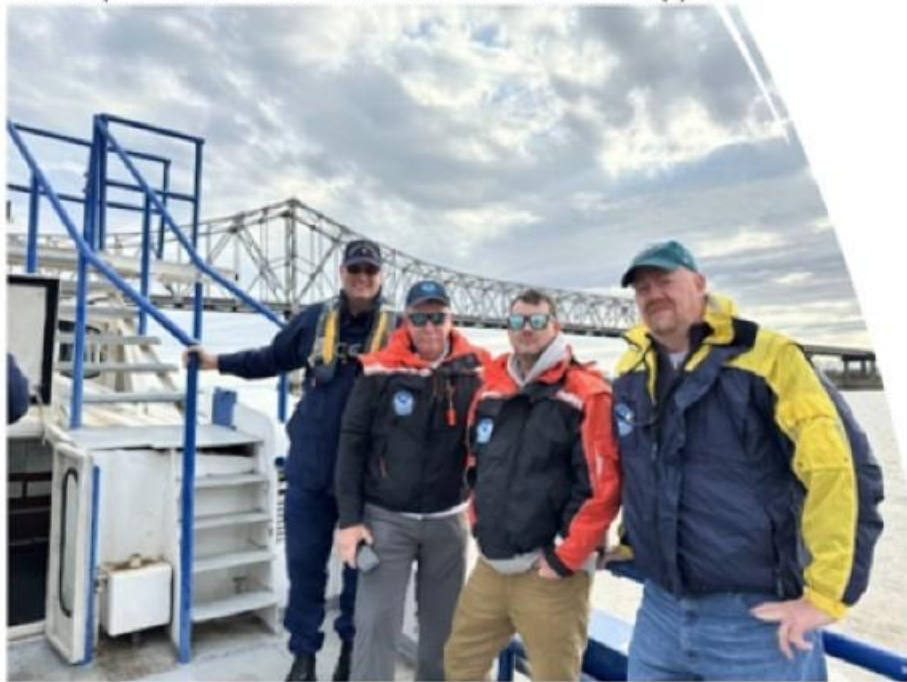
Lake Charles

54,000 Jobs

\$40 Billion

65 Million Tons

On Ship with the NOBRA Pilots on the Mississippi R



# Understanding of Ports and Needs and Contacts are Pretty Crucial

---





# Everyone Should Be Included on Local Meetings





# MTSRU- A Guide in Storm Response and Recovery

updated following a Transportation  
Disruption.

## Highways and Navigation Systems

Access to Navigation  
Deep Draft Channels  
Deep Draft Channels

Salvage/Wreck Removal  
Incidents  
Materials Incidents

## Port Infrastructure

Facilities  
Cargo Facilities  
Passenger Vessel and Ferry

Cargo Vessels  
Passenger Vessels and Ferries  
Vessels



For additional information or to learn how

## Marine Transportation System Recovery Unit (MTSRU) Pocket Guide



"The nation needs a coordinated,

**CART**  
ation System Recovery Common Assessment

CREATE AN EVENT

ACTIVE EVENTS

PA

Active Events





# Hurricane Response Efforts- 2024

Hurricanes Francine, Helene, and Milton Saw 2 NRT Teams Working in the Houma Area and Tampa Bay and Adjacent Areas





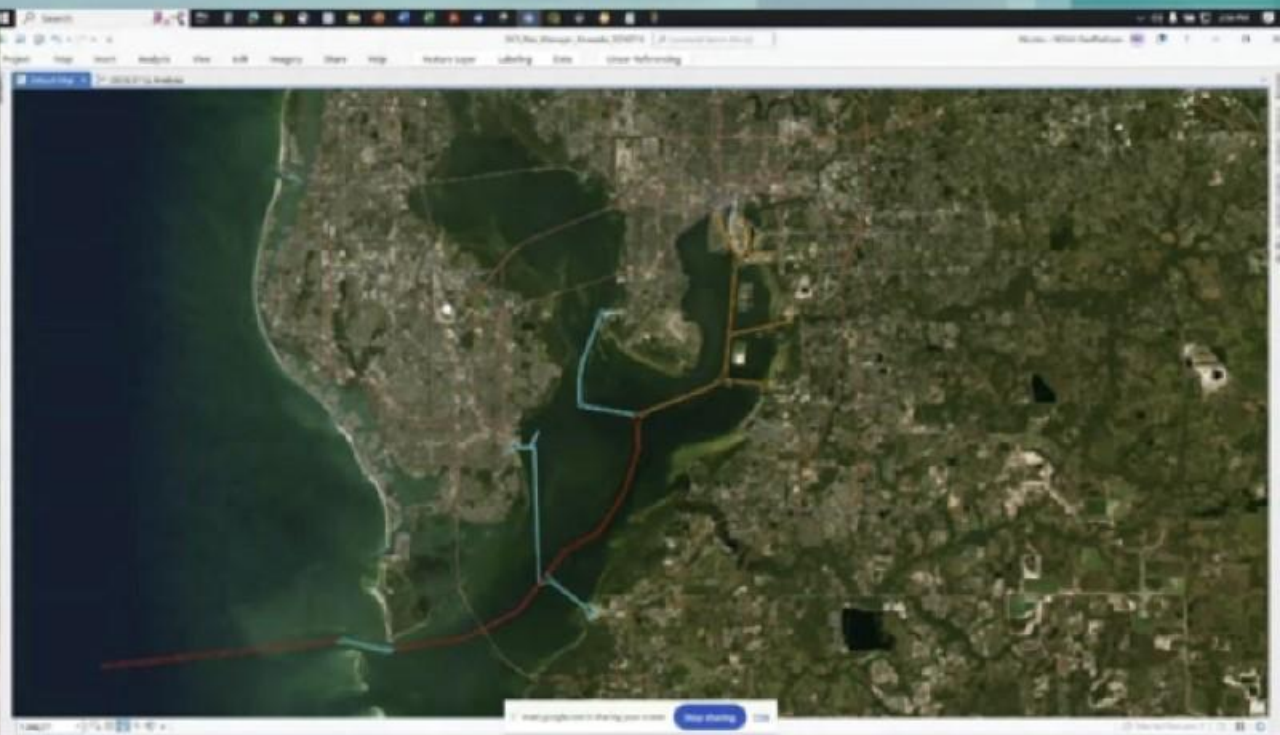
# Hurricane Milton

- Saw Approximately 5 Million Residents Under Evacuation Orders
- Moving a Large Population Away from the Tampa Bay Area (and Surrounding Coastal Communities) Saw Large Areas With No Fuel
- 93% of All Fuel that Florida's 22 Million Residents Consume Daily is Brought in by Ship or Tows





# Responding to Hurricane Milton Followed the Response and Recovery Template of Hurricanes Laura and Delta and Ida





# Saturday Morning Saw the First Fuel Ship Move Into Tampa Bay to the Tank Terminals at Port Tampa



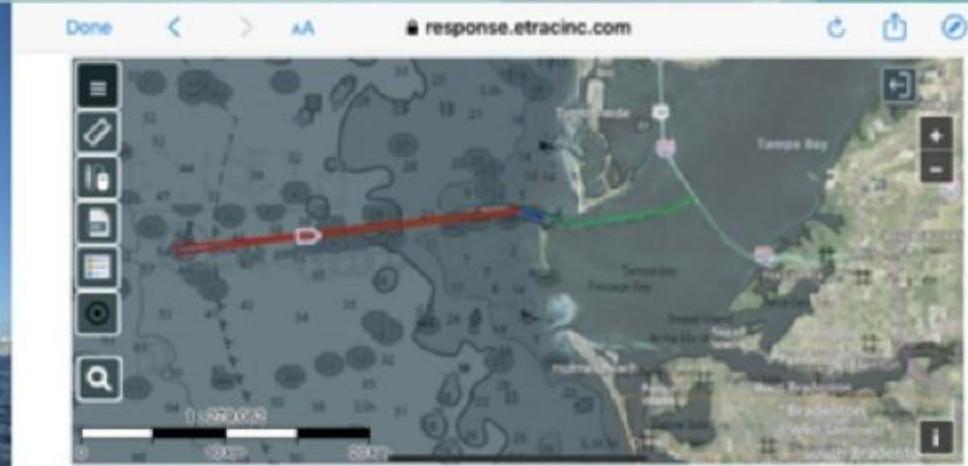
Reopening of the Ports of Tampa Bay in  
about 48 Hours from Landfall

The Ports of Tampa Bay- the State's  
Largest- See Over 8 Billion Gallons of Fuel  
Delivered to the State Each Year





# An Offshore Vessel (much Like the Blake and Thomas Jefferson) Was Tasked to Join the NRTs and USACE and Port's Resources



Dual Multi Beam Sonars and Working 24 Hour Operations Provided Large Area Coverage of the Ship Channel – from Sea Buoy to Sunshine Skyway Bridge in Just 9 Hours – Starting Friday Evening to Saturday Morninng – and Providing the Information for the COTP to Reopen the Channel at 7:00 am Saturday

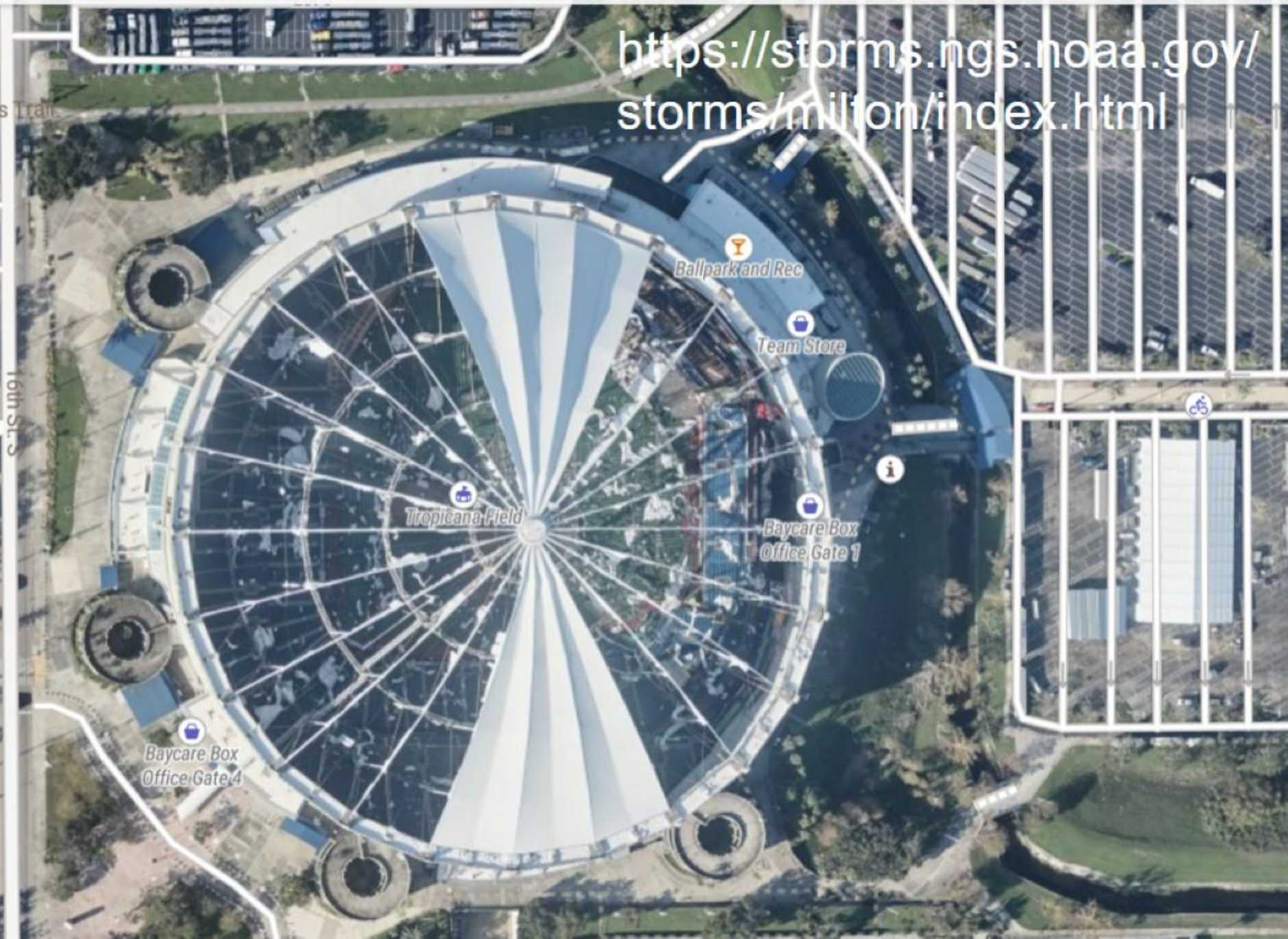




<https://storms.ngs.noaa.gov/storms/milton/index.html>

High Resolution  
Imagery Collected by  
NOAA NGS RSD







# A Huge Thank You Across 2024

- The USACE
- The USCG
- Ports of the Gulf Coast
- Pilots Across the Gulf and Florida
- The Colleagues of NOAA's NRT Teams
- The Colleagues/Navigation Managers Across the Gulf and Eastern Seaboard
- The NOAA Hydro Surveying Division- Supporting Not Only the Calcasieu Project, But Also the Surveying Response Work for Hurricane Milton
- And Especially the NOAA NWS WFO's Across the Coasts





# Thank You To All

