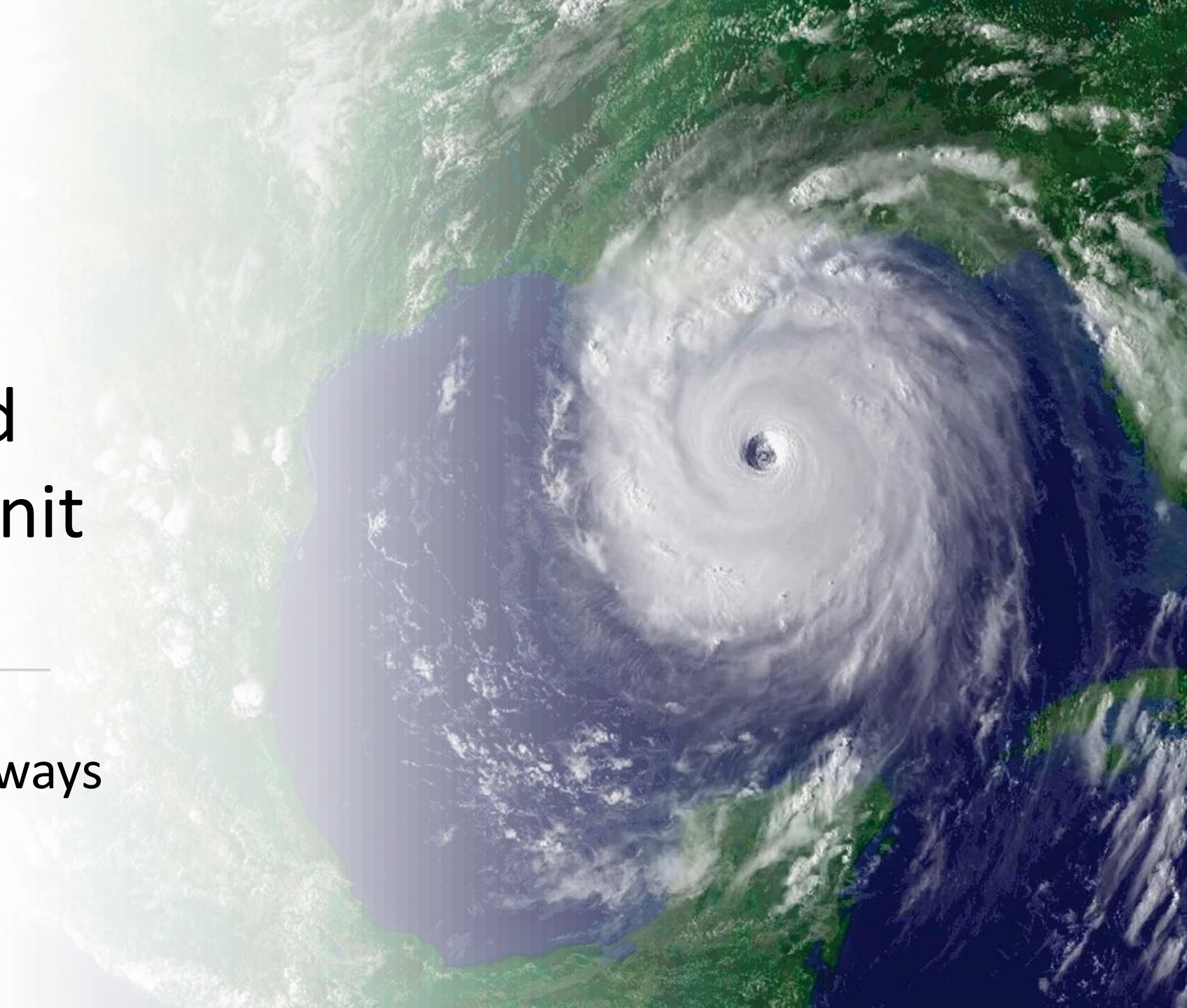




# U.S. Coast Guard Marine Safety Unit Morgan City

---

LT Jenelle Piché, Waterways  
Division Chief





# PORT CONDITIONS

PORT CONDITIONS ARE SET BY THE CAPTAIN OF THE PORT (COTP) AND ARE USED TO ALERT MARINERS OF CHANGES IN PORT OPERATIONS IN PREPARATION FOR HURRICANES AND HEAVY WEATHER.



## PORT CONDITION WHISKEY

GALE FORCE WINDS (34 KNOTS OR 39MPH) ARE PREDICTED TO ARRIVE WITHIN 72 HOURS.

**PORT STATUS:** OPEN TO ALL COMMERCIAL AND RECREATIONAL TRAFFIC.



## PORT CONDITION X-RAY

GALE FORCE WINDS ARE PREDICTED TO ARRIVE WITHIN 48 HOURS.

**PORT STATUS:** OPEN TO ALL COMMERCIAL AND RECREATIONAL TRAFFIC.



## PORT CONDITION YANKEE

GALE FORCE WINDS ARE PREDICTED TO ARRIVE WITHIN 24 HOURS.

**PORT STATUS:** CLOSED TO INBOUND TRAFFIC AND VESSEL TRAFFIC CONTROL MEASURES IN EFFECT ON VESSEL MOVEMENTS WITHIN THE PORT.



## PORT CONDITION ZULU

GALE FORCE WINDS ARE PREDICTED TO ARRIVE WITHIN 12 HOURS.

**PORT STATUS:** CLOSED TO ALL INBOUND AND OUTBOUND TRAFFIC.



## PORT CONDITION RECOVERY

THE STORM IS NO LONGER A THREAT TO THE AREA, HOWEVER SOME DAMAGE MAY HAVE OCCURED AND RESPONSE AND RECOVERY OPERATIONS ARE IN PROGRESS.

**PORT STATUS:** REOPENED TO OUTBOUND TRAFFIC AT COMPLETION OF PORT SURVEY. VESSEL TRAFFIC CONTROL MEASURES REMAIN IN EFFECT ON VESSEL MOVEMENTS WITHIN THE PORT.



# Port Closing Priorities

## Implement Port Conditions

W: 72hrs / X: 48hrs / Y: 24hrs / Z: 12hrs (port closed)

- Marine Safety Information Bulletins sent via email and posted on <https://www.navcen.uscg.gov/msi>
- Harbor Patrols visiting vessels planning to remain in port and visit waterfront facilities
- Contact us with any questions

## VTs Berwick Bay Closure

- Based on Port Conditions Set by the COTP, BNSF Railroad bridge closure, and USACE lock closures

## Lock Closures

- Directed by USACE and State



Coast Guard Sector New Orleans  
VESSEL REMAINING IN PORT CHECKLIST REPORTING TOOL

Email to [D08-SMB-VTSNEWORLEANS-LMR@USCG.MIL](mailto:D08-SMB-VTSNEWORLEANS-LMR@USCG.MIL)  
or Fax to VTS Lower Mississippi River 504-365-2519

Date: \_\_\_\_\_ Vessel Has Completed Checklist in Enclosure 1: ☐ Yes ☐ No

Vessel Name: \_\_\_\_\_

Nationality: \_\_\_\_\_

(Length: \_\_\_\_\_, Draft: \_\_\_\_\_)

Master: \_\_\_\_\_

Phone Number/ Fax: \_\_\_\_\_

Email Address: \_\_\_\_\_

Departure Date: \_\_\_\_\_

Persons Onboard Vessel (#): \_\_\_\_\_

Reason(s) for staying in port: \_\_\_\_\_

Anchorage/Berth/Location: \_\_\_\_\_

Ballasted: \_\_\_\_\_

Cargo type/Amount: \_\_\_\_\_

Number of Tugs: \_\_\_\_\_

Name of Tugs: \_\_\_\_\_

Mooring or Anchoring Plan (Ex) \_\_\_\_\_

\_\_\_\_\_

\_\_\_\_\_

\_\_\_\_\_

\_\_\_\_\_

\_\_\_\_\_

\_\_\_\_\_

\_\_\_\_\_

\_\_\_\_\_

\_\_\_\_\_

\_\_\_\_\_

\_\_\_\_\_

\_\_\_\_\_

\_\_\_\_\_

\_\_\_\_\_

\_\_\_\_\_

\_\_\_\_\_

\_\_\_\_\_

\_\_\_\_\_

\_\_\_\_\_

\_\_\_\_\_

\_\_\_\_\_

Facility name \_\_\_\_\_

\*\*Submit via email to [FacilitiesNOLA@uscg.mil](mailto:FacilitiesNOLA@uscg.mil) or  
[D08-DG-MSUBatonRouge-Bullpen@uscg.mil](mailto:D08-DG-MSUBatonRouge-Bullpen@uscg.mil)

### STORM PREPARATION CHECKLIST FOR WATERFRONT FACILITIES

#### I. PORT CONDITION WHISKEY (72 HOURS BEFORE ANTICIPATED LANDFALL)

DATE/INITIALS	TASK
	(a) Review facility contingencies for barge fleet facilities should breakdown barges and specify of tugs/towboats. Barge flee measures to reduce the size of barge fleet.
	NOTE: Plans to nest barges must be approved by the CO.
	(b) Review vessel arrival schedule.
	(c) Review operational schedule of Particular Hazard Cargoes arriving via highway.
	(d) Evaluate the extent that a during and after storm passage, energy, or transportation needed, report it to the CO.
	(e) Facilities utilizing permanent shall inventory contents and review data on age/structural soundness and double up as capable of withstanding project.
	(f) Account for and document

NOTE: In the event that your Facility intends to operation schedule at any point during the storm with date/time and extent of operational changes

\_\_\_\_\_

\_\_\_\_\_

\_\_\_\_\_

\_\_\_\_\_

\_\_\_\_\_

\_\_\_\_\_

\_\_\_\_\_

\_\_\_\_\_

\_\_\_\_\_

\_\_\_\_\_

UNITED STATES COAST GUARD SECTOR NEW ORLEANS		
MARINE SAFETY INFORMATION BULLETIN		
Volume 001 Issue 001	Issue 001	Issue 001
Setting of Port Condition WHISKEY		
At XXXX local time, XXX, in preparation for the approaching Tropical Storm XXXX, the Captain of the Port (COTP) New Orleans will set Port Condition WHISKEY in accordance with the Maritime Hurricane Contingency Port Plan (DHCCPP) found at <a href="https://www.uscg.mil/port-director/baton-rouge">https://www.uscg.mil/port-director/baton-rouge</a> .		
Port Status: Open to all commercial traffic.		
All vessels entering and departing the COTP Zone New Orleans are reminded to update their Notice of Arrival with any changes to their arrival or departure information (31 Code of Federal Regulations 165.205, 33 CFR 165.212). The COTP has also outlined specific port preparation requirements and recommendations in the DHCCPP.		
Mariners are advised that drawbridges will close when wind speeds exceed 35 mph or once evacuation begins. As a result, mariners are urged to seek passage through drawbridges well in advance of the arrival of gale force winds. For most up to date bridge information, please contact Coast Guard District Eight Bridges at (504) 671-2125 or <a href="mailto:DHDBALL@uscg.mil">DHDBALL@uscg.mil</a> .		
Port partners and mariners are cautioned that the COTP New Orleans may set Port Condition X-RAY and further conditions as the situation develops. You are strongly encouraged to review your existing hurricane plan, take actions to minimize risk, and be prepared to evacuate, if necessary. For recommended precautionary measures and storm preparation checklists, refer to the DHCCPP found at <a href="https://www.uscg.mil/port-director/baton-rouge">https://www.uscg.mil/port-director/baton-rouge</a> . Vessels intending to remain in the port must submit a Remaining-in-Port Checklist to the Vessel Traffic Service Lower Mississippi River (VTS) as listed below.		
Attachments:		
(1) Waterfront FACILITIES Storm Preparation Checklist (Port Condition WHISKEY) – submit via email to <a href="mailto:FacilitiesNOLA@uscg.mil">FacilitiesNOLA@uscg.mil</a> or <a href="mailto:D08-DG-MSUBatonRouge-Bullpen@uscg.mil">D08-DG-MSUBatonRouge-Bullpen@uscg.mil</a> .		
(2) VESSEL Remaining in Port Checklist Reporting Tool – submit within 24 hours to Vessel Traffic Service via email <a href="mailto:D08-SMB-VTSNEWORLEANS-LMR@USCG.MIL">D08-SMB-VTSNEWORLEANS-LMR@USCG.MIL</a> or fax at (504) 365-2519.		
(3) RNA FACILITIES with AHOP - 72 Hour Storm Specific Verification Report – submit via email to <a href="mailto:FacNOLA@uscg.mil">FacNOLA@uscg.mil</a> .		
For additional information, contact the following:		
Waterways Management: <a href="mailto:FacNOLA-WPM@uscg.mil">FacNOLA-WPM@uscg.mil</a>		
Sector New Orleans Command Center (24 hours): (504) 365-2200		
Vessel Traffic Center (24 hours): (504) 365-2514 or VTS-FM channels 5A, 12, or 67		
Coast Guard District Eight Bridges: (504) 671-2125 or <a href="mailto:DHDBALL@uscg.mil">DHDBALL@uscg.mil</a>		
National Response Center (24 hours): 1-800-424-8802		
CAPTAIN W. E. WATSON Captain of the Port New Orleans		
For a current list of MSIs in the COTP New Orleans Zone visit <a href="https://www.uscg.mil/port-director/baton-rouge">https://www.uscg.mil/port-director/baton-rouge</a> under "Safety Notifications".		

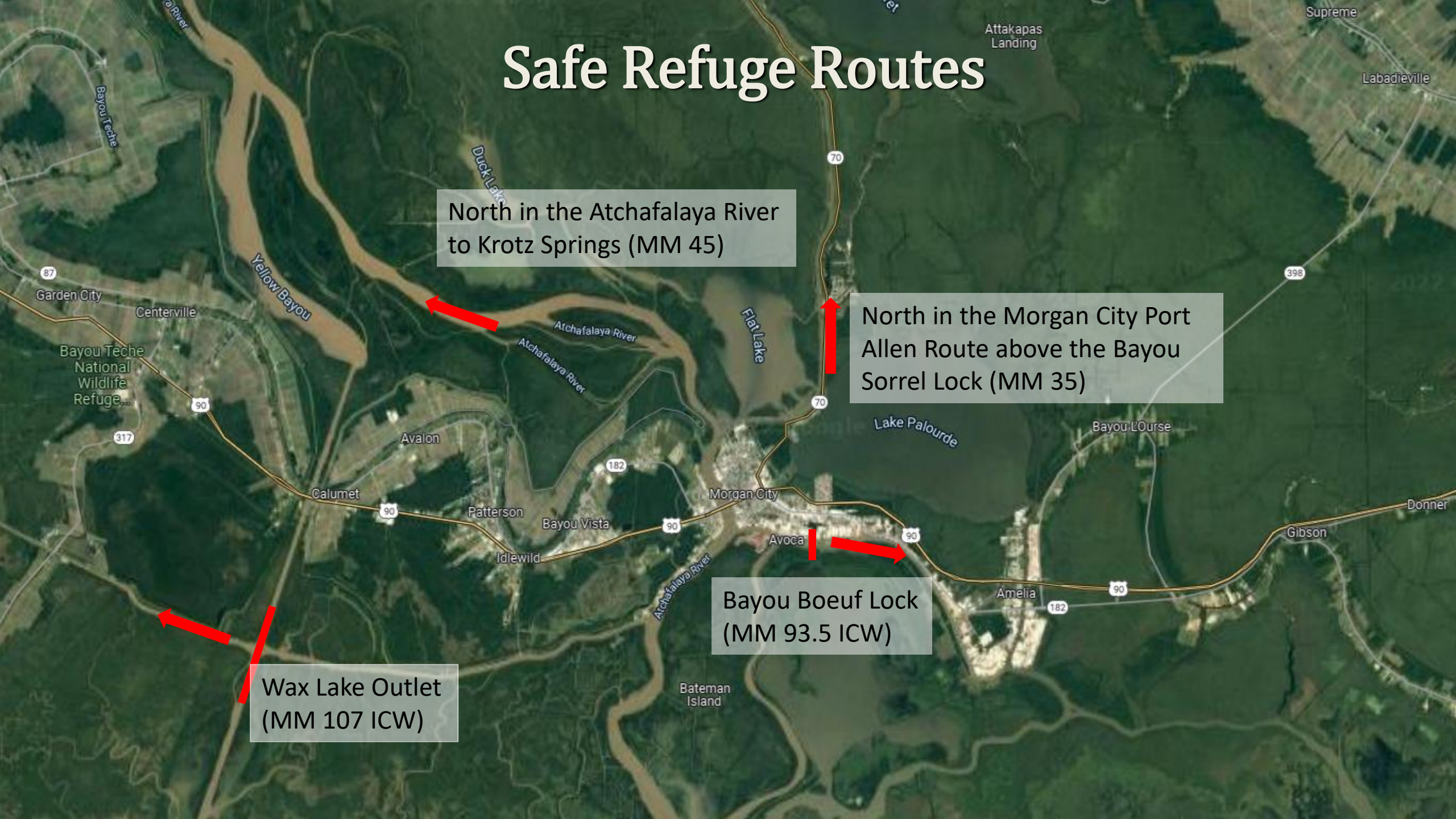
# Safe Refuge Routes

North in the Atchafalaya River  
to Krotz Springs (MM 45)

North in the Morgan City Port  
Allen Route above the Bayou  
Sorrel Lock (MM 35)

Bayou Boeuf Lock  
(MM 93.5 ICW)

Wax Lake Outlet  
(MM 107 ICW)





# Port Reconstitution Priorities

## #1 Priority: Search and Rescue

### Port Assessment

- Navigational Channel Surveys
- ATON verification and obstruction/hazard markings
- Partnership with GICA and USACE
- Locks & Bridges
- Pollution
- Facility Statutes





**CDR Mary Gilday**, MSU Morgan City Commanding Officer  
**LCDR Matthew Meacham**, MSU Morgan City Executive Officer  
**LCDR Laura McDonald**, MSU Morgan City Chief of Prevention  
**Mr. Tim Veach**, VTS Berwick Bay Supervisor  
**LT Jenelle Piché**, Waterways Management Division Officer  
**Senior Chief Gabriel Bosman**, Officer in Charge of USCGC AXE  
**BM1 Gary Hutchinson**, Aids to Navigation Team Morgan City

**MSU Morgan City Waterways Management Duty Phone: 985-855-0724**

**MSU Morgan City Pollution/Facility Duty Phone: 985-397-3277**

**MSU Morgan City Officer of the Day: 985-397-3300**

**Vessel Traffic Service Berwick Bay: 985-380-5370**

**Sector New Orleans Command Center: 504-365-2543**

**Port Conditions: <https://www.navcen.uscg.gov/msi>**