

VICKSBURG DISTRICT

Project Update

Atchafalaya – Red River Maritime Roundtable

Pat Hemphill
Deputy District Engineer

07 June 2022



US Army Corps
of Engineers®



AGENDA

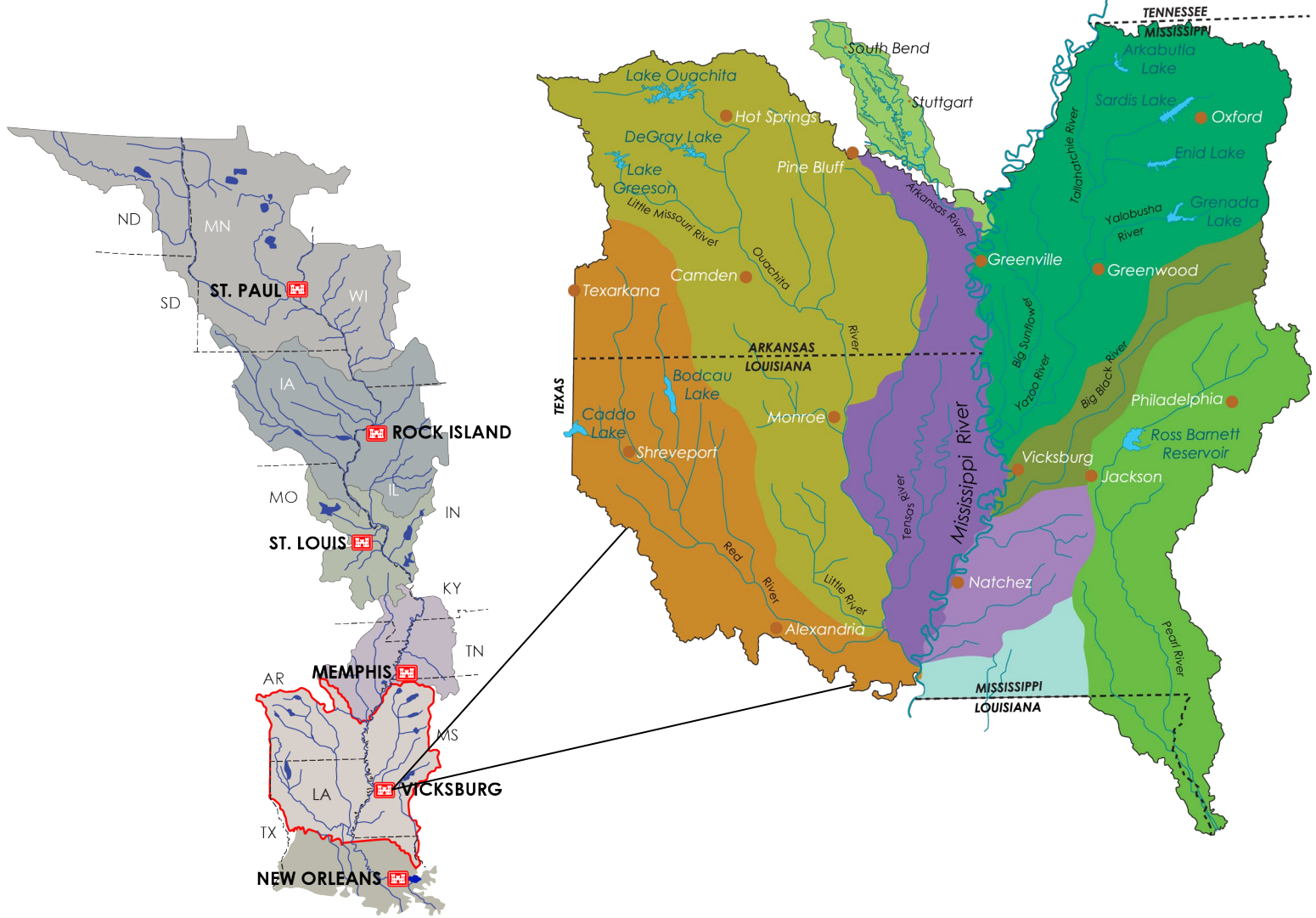


- Vicksburg District – What We Do
- Red River – Value to the Nation
- FY22 Funding
- What We Accomplished
- What's to Come
- Permitting Actions on the Red River
- Partnerships





VICKSBURG DISTRICT - WHAT WE DO



Flood Risk Management 	478 flood control structures	29 pumping plants	1,950 levee miles	10 flood control reservoirs
Navigation 	1,252 navigable channel miles	12 locks 9 dams	5 Red River Ports	7 MS River Ports
Regulatory 	4 permit types	1,183 completed actions (FY21)	87 mitigation banks	
Recreation 	10 lakes	193 recreation sites	~30M annual visitors	
Hydropower 	3 power plants	~168K kw hours of energy annually		
Contingency Operations Support 	Joint district teams		Multimillion \$ FEMA assignments	
Environmental Stewardship 	466K acres forestry & wildlife land		25K acres reforested mitigation lands	
Emergency Operations 	2 tactical vehicles	27 activations*	1,900 deployments in 68 missions*	
Interagency Support 	FEMA, EPA, USFWS, Veterans Administration, USDA, and many more			
Water Supply 	11 water supply agreements	~300K acre-feet of storage		



RED RIVER – VALUE TO THE NATION



ENVIRONMENTAL STEWARDSHIP

- ✓ Annual Least Tern Survey
- ✓ Timber and wildlife management



RECREATION

- ✓ 2 visitor centers
- ✓ 13 recreation areas
- ✓ 20 campsites
- ✓ 400,000 annual visitors



FLOOD RISK MANAGEMENT

- ✓ 2 flood control dams
- ✓ 300+ miles of levees in LA
- ✓ 120+ miles of levees in AR



NAVIGATION

- ✓ 5 Red River ports
- ✓ 5 locks and dams
- ✓ 236 miles of navigable channel



OPERATING THE JBJ



Minimum Needed Annually

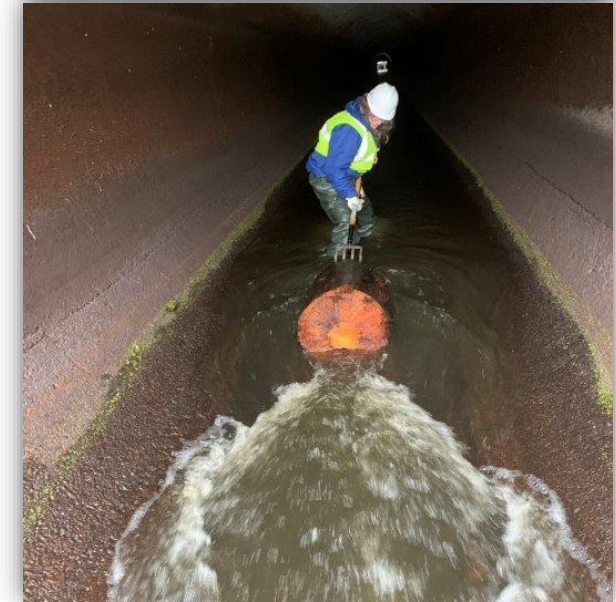
\$5.0M – dredging
 \$3.3M – routine O&M
 \$4.0M – lock operation cont.
 \$1.1M – recreation

\$13.4M



P-BUD FY 21 Funding Level P-BUD FY 22 Funding Level

\$3.0M – dredging	\$3.0M – dredging
\$2.9M – routine O&M	\$3.0M – routine O&M
\$4.2M – lock operation cont.	\$4.2M – lock operation cont.
\$1.0M – recreation	\$1.0M – recreation
	\$16.1M – POM funding
\$11.1M	\$27.3M





WHAT WE ACCOMPLISHED

1 Miller County #2 Levee Repair



2 Garland Bank Stabilization



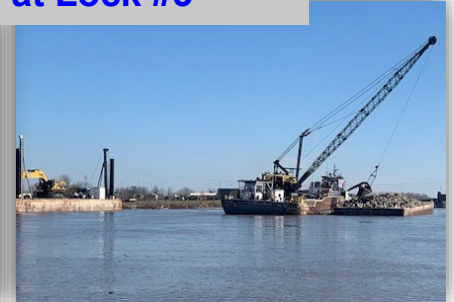
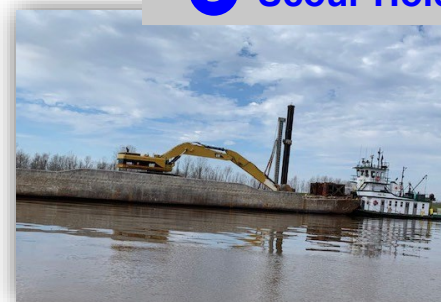
3 East Point Bank Stabilization & Levee Setback



4 Grand Ecore Stabilization Project



5 Scour Hole at Lock #3



\$18.1M
Invested



WHAT'S TO COME



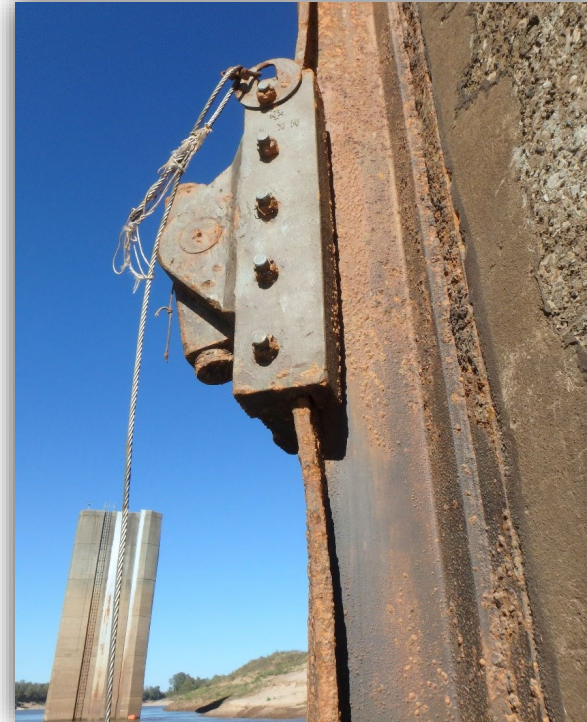
POM Funding:

\$16.1M



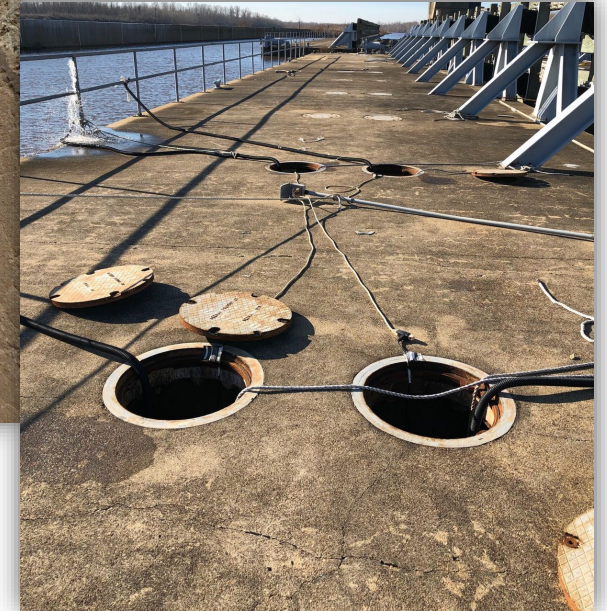
POM Funding Includes:

- Boggs dewatering of the lock chamber
- Boggs constructing and installing 5 new tainter gates



Infrastructure Investment and Jobs Act Funding:

\$803K



IJA Funding Includes:

- Boggs Down Stream Floating Guide Wall Repairs
- Recreation Area Picnic Shelters Repairs
- Lock 2 Comfort Station Roof Repairs

**Thank you, Congress and Partners,
for this major investment.**



JBJ 12-FT CHANNEL FEASIBILITY STUDY



- Study authorized in WRDA 2018
- Value added: decreased transportation costs
- RRWC is study sponsor





PARTNERSHIPS



Division and District leadership and MRC members, visit Thoma-Sea Shipyard, Lockport, LA, Dec. 2021



Col. Hilliard presents at RRVA conference, Shreveport, LA, Feb. 2022



Col. Hilliard attends the MRC's annual high-water inspection trip, Apr. 2022



Regional leadership meet for the MVD Command Strategic Review, Vicksburg, MS, Mar. 2022



QUESTIONS

US Army Corps of Engineers Vicksburg District

CONTACT US: (601) 631-5000

vicksburgdistrict@usace.army.mil

Web: mvk.usace.army.mil



@VicksburgUSACE

