



ATCHAFALAYA – RED RIVER MARITIME ROUNDTABLE

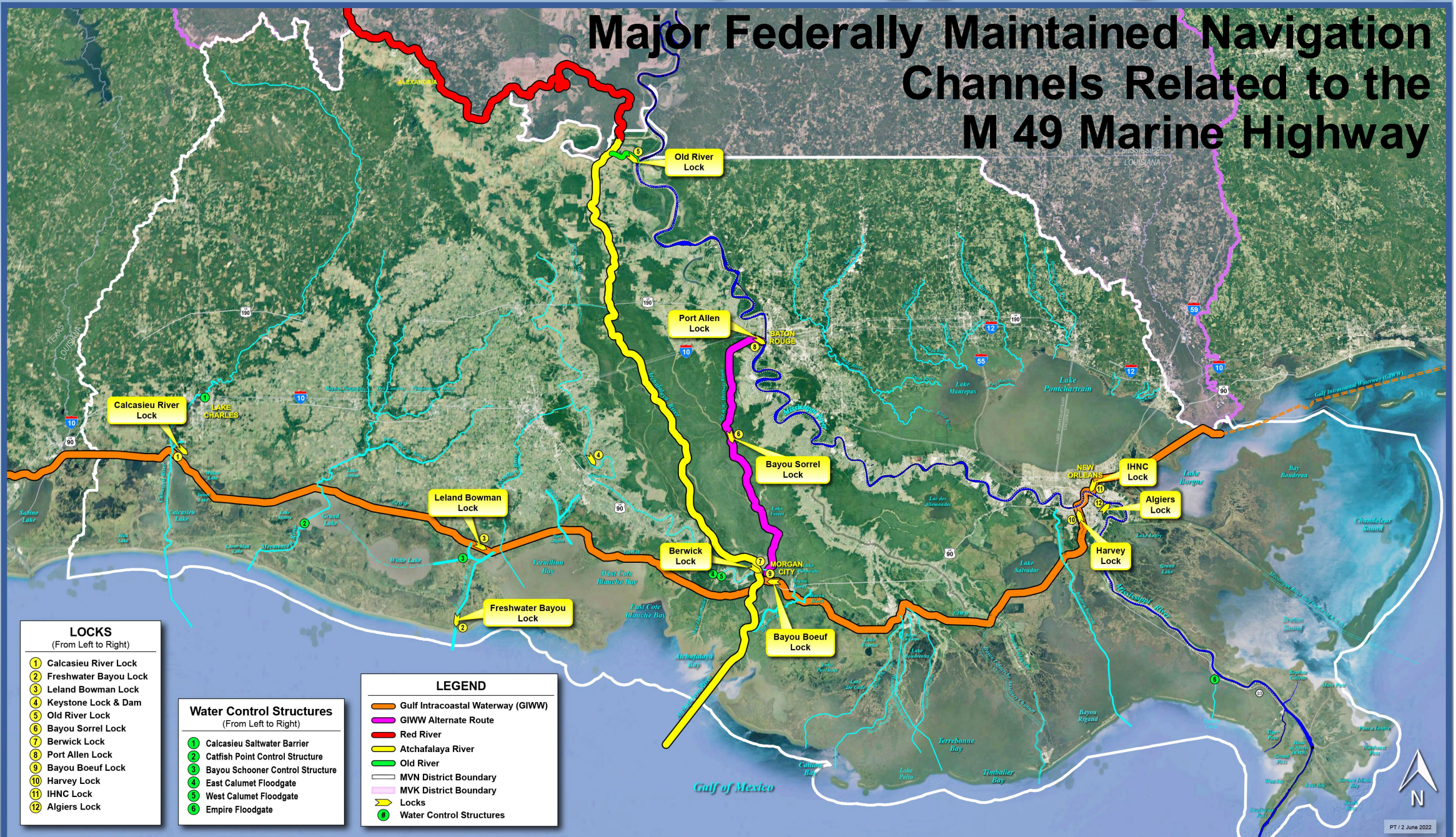
Morgan City, Louisiana
June 7 & 8, 2022

COL Stephen F. Murphy, District Commander, US Army Corps of Engineers New Orleans District



BUILDING STRONG®

Major Federally Maintained Navigation Channels Related to the M 49 Marine Highway

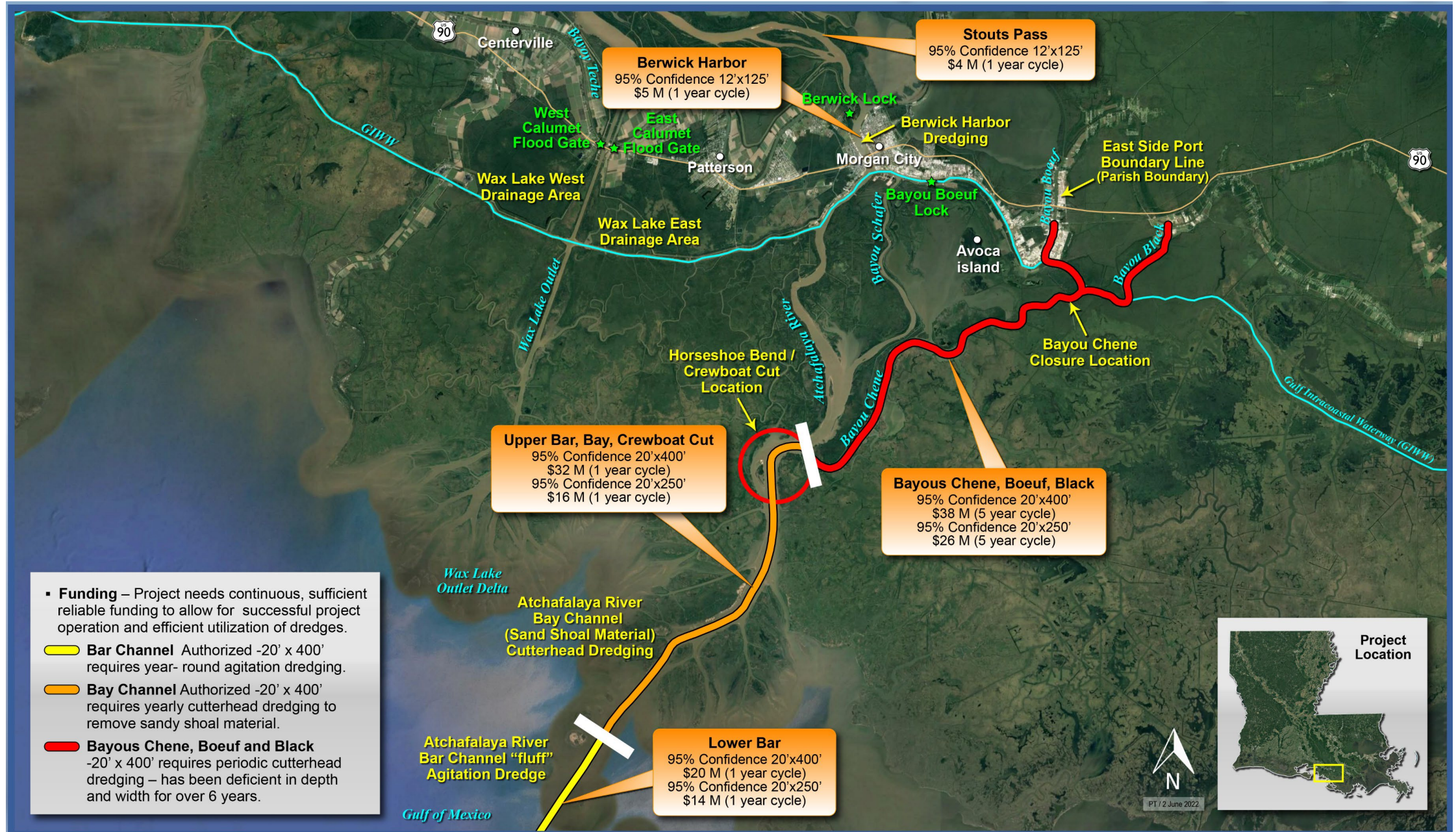


- LOCKS**
(From Left to Right)
- ① Calcasieu River Lock
 - ② Freshwater Bayou Lock
 - ③ Leland Bowman Lock
 - ④ Keystone Lock & Dam
 - ⑤ Old River Lock
 - ⑥ Bayou Sorrel Lock
 - ⑦ Berwick Lock
 - ⑧ Port Allen Lock
 - ⑨ Bayou Boeuf Lock
 - ⑩ Harvey Lock
 - ⑪ IHNC Lock
 - ⑫ Algiers Lock

- Water Control Structures**
(From Left to Right)
- ① Calcasieu Saltwater Barrier
 - ② Catfish Point Control Structure
 - ③ Bayou Schooner Control Structure
 - ④ East Calumet Floodgate
 - ⑤ West Calumet Floodgate
 - ⑥ Empire Floodgate

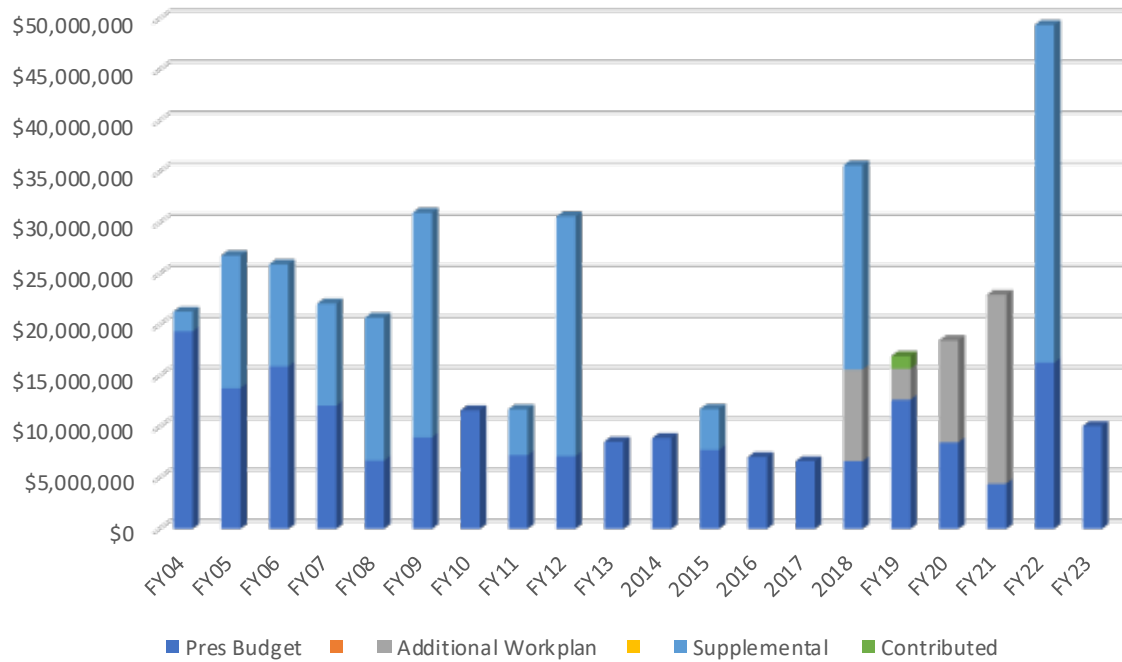
- LEGEND**
- Gulf Intracoastal Waterway (GIWW)
 - GIWW Alternate Route
 - Red River
 - Atchafalaya River
 - Old River
 - MVN District Boundary
 - MVK District Boundary
 - Locks
 - Water Control Structures

Atchafalaya River Dredging Requirements



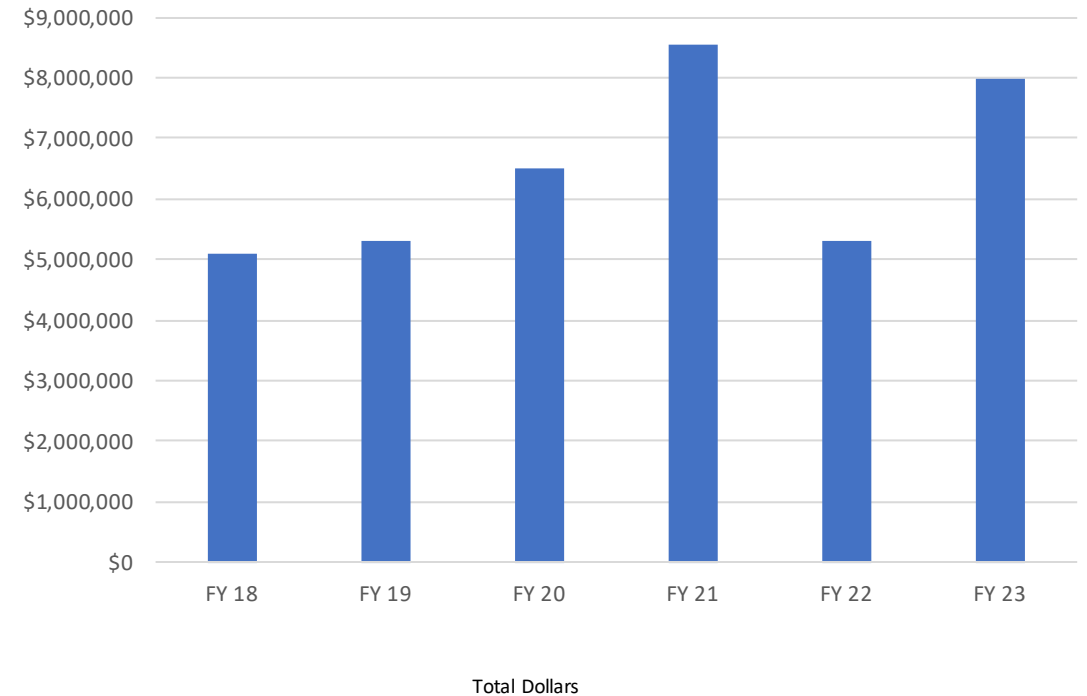
Atchafalaya River Funding History for Dredging

Recent Funding History Atchafalaya River and Bayous Chene, Boeuf and Black



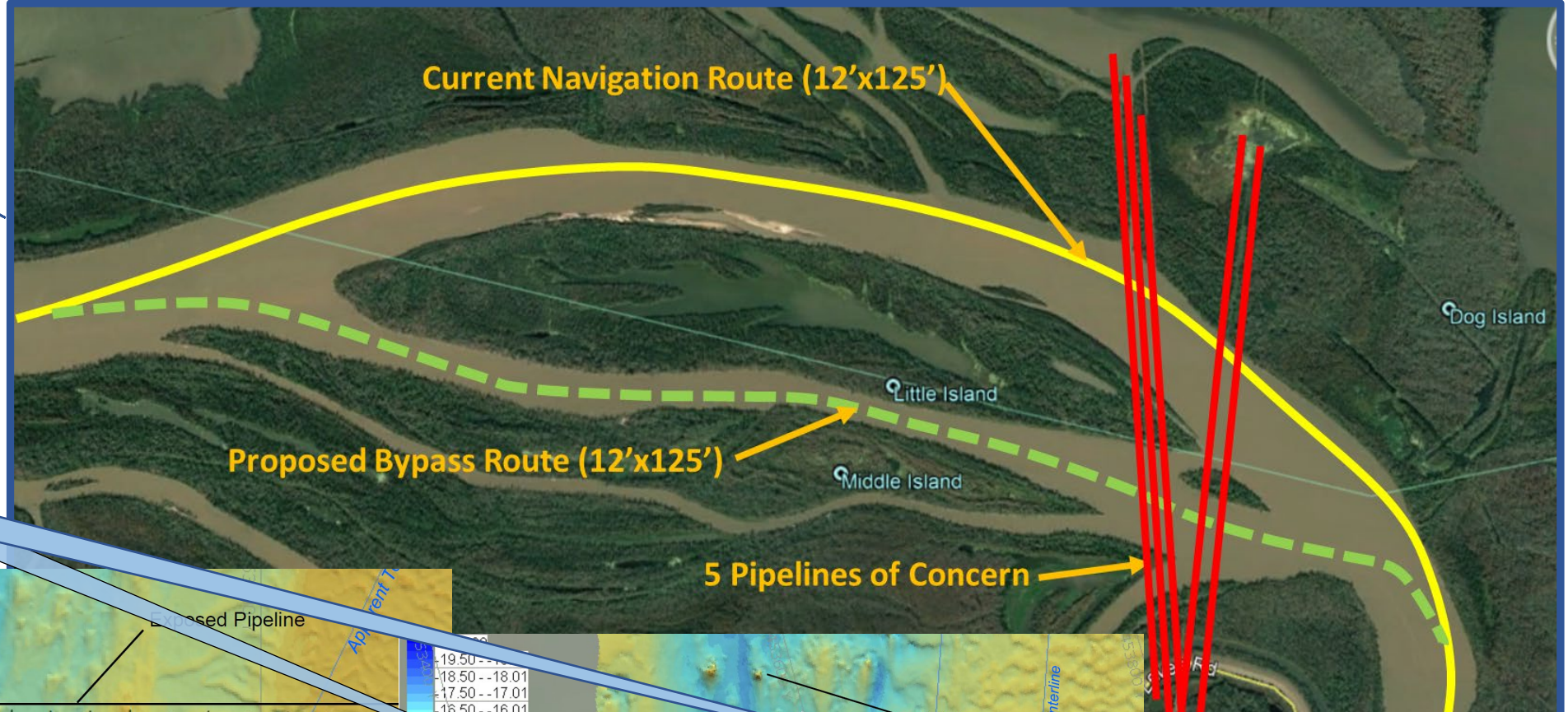
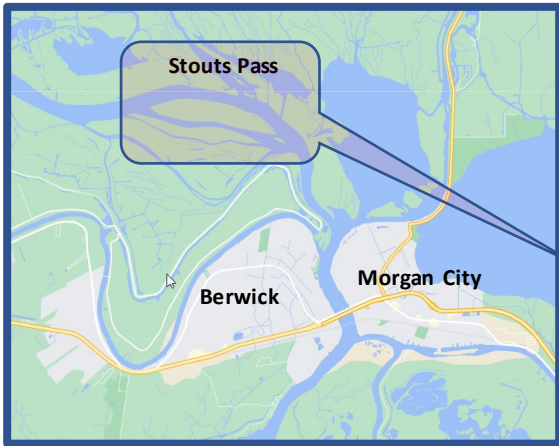
Dredging of Areas South of Morgan City
O&M Appropriation

Recent Funding History Atchafalaya Basin Project Dredging
Morgan City to Red River

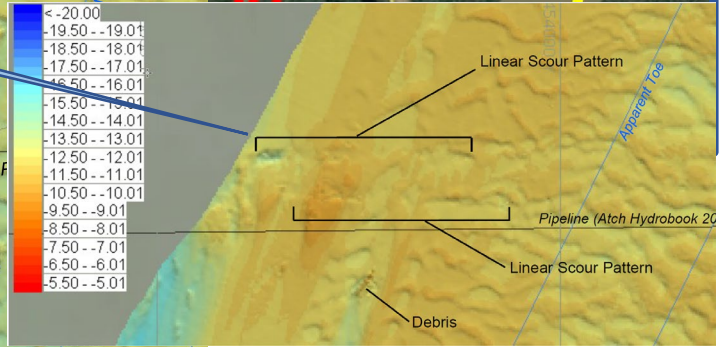
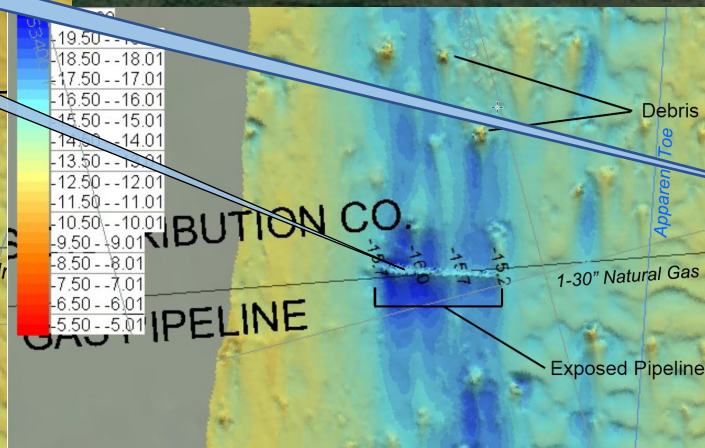
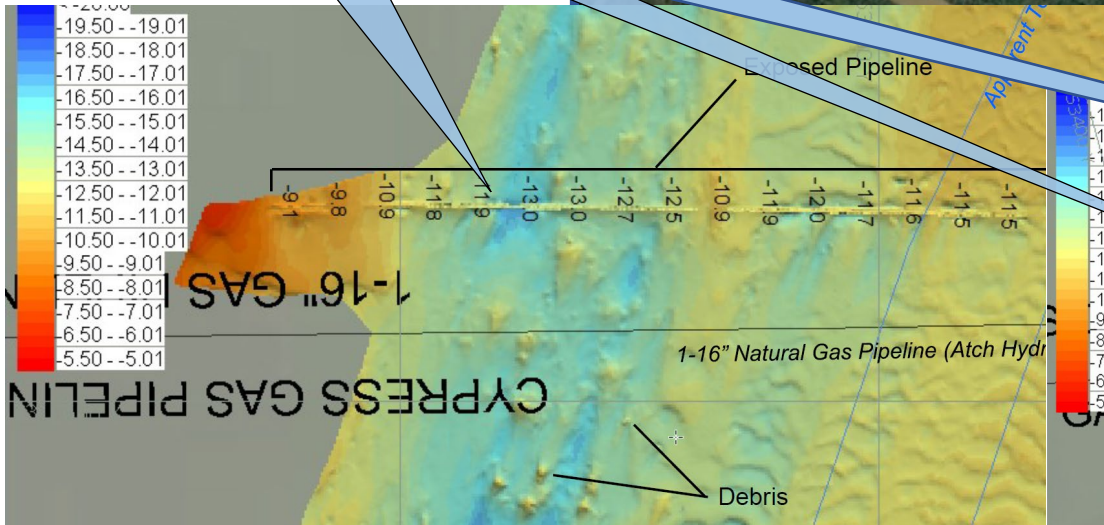


Dredging of Areas In Morgan City and North
MR&T Appropriation

Stouts Pass – Little Island Pass Initiative



Exposed Pipelines
2 June 2022
Survey



Bayou Boeuf, Bayou Sorrel, and Old River Locks

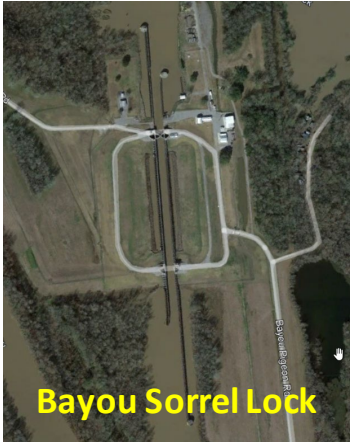
M 49 "Feeders"



Bayou Boeuf New Concrete South Chamber Guidewall



Bayou Boeuf Lock



Bayou Sorrel Lock



Old River Lock



Bayou Sorrel SW Guidewall Replacement

Locks that feed the M 49 are aging and need major maintenance to assure continued marine access