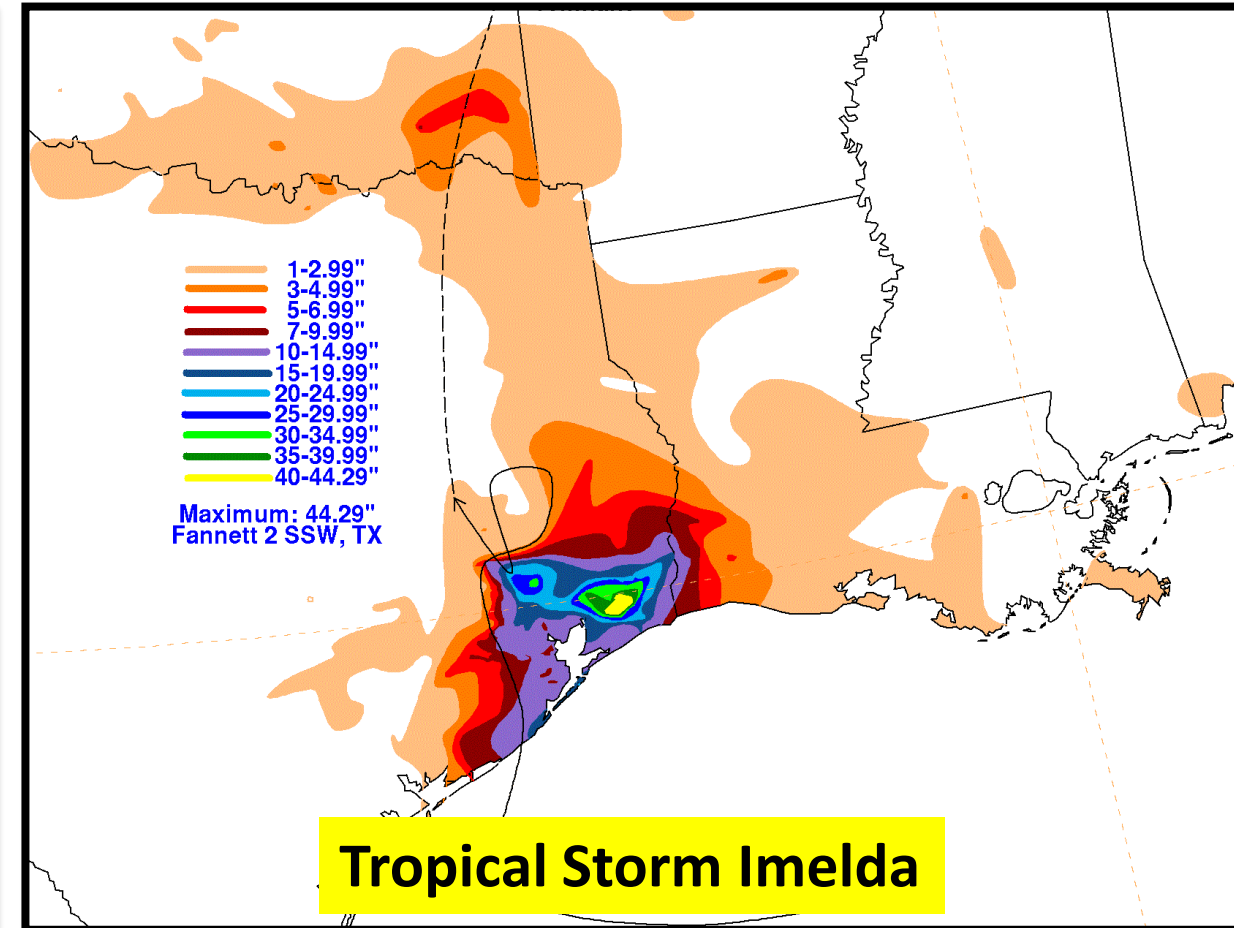
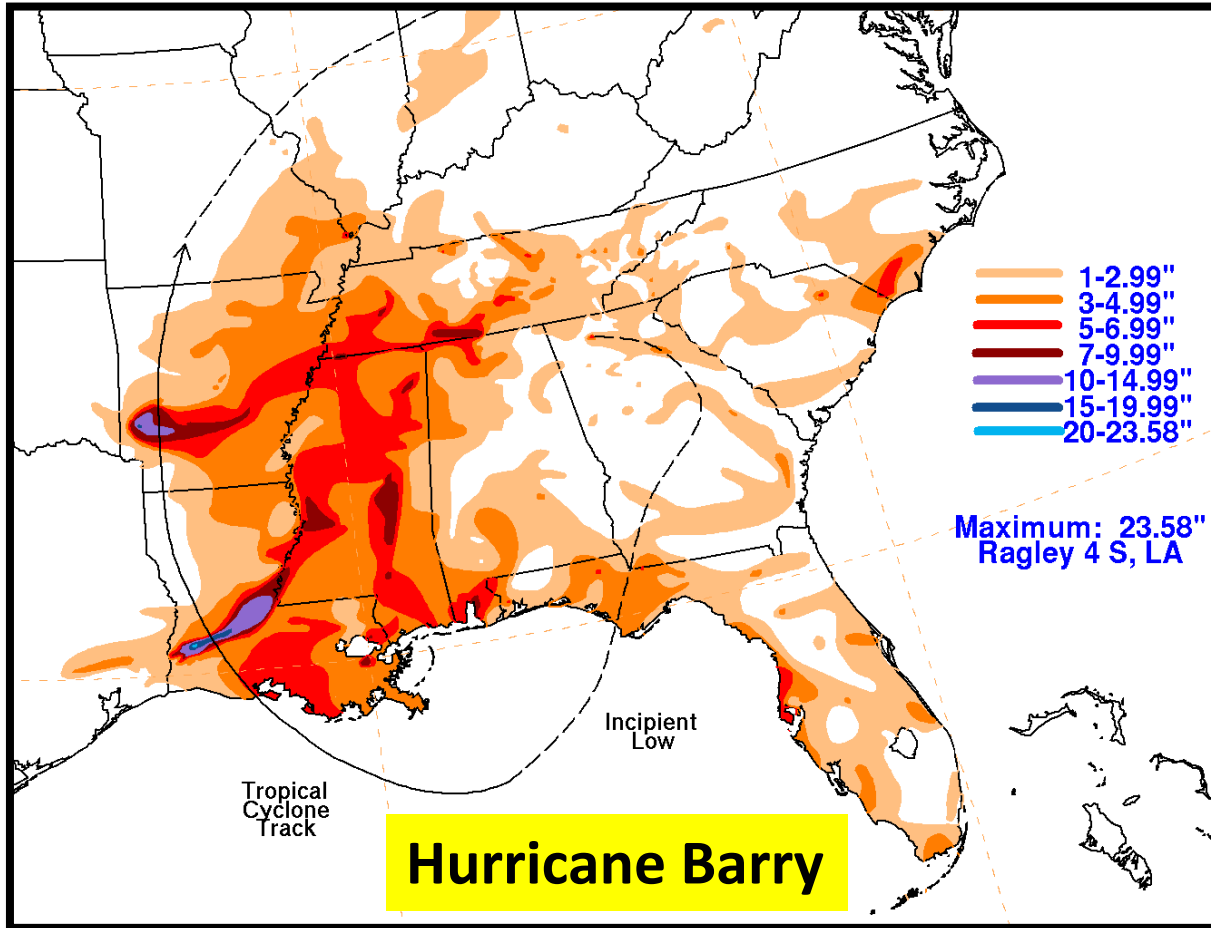


National Weather Service
Lake Charles, Louisiana

2020 Hurricane Season

By Roger Erickson, Warning Coordination Meteorologist



weather.gov/lch



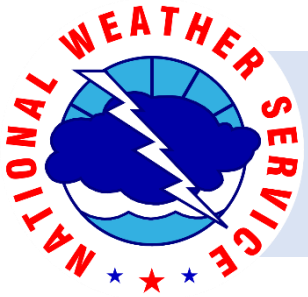
NWSLakeCharles



@NWSLakeCharles



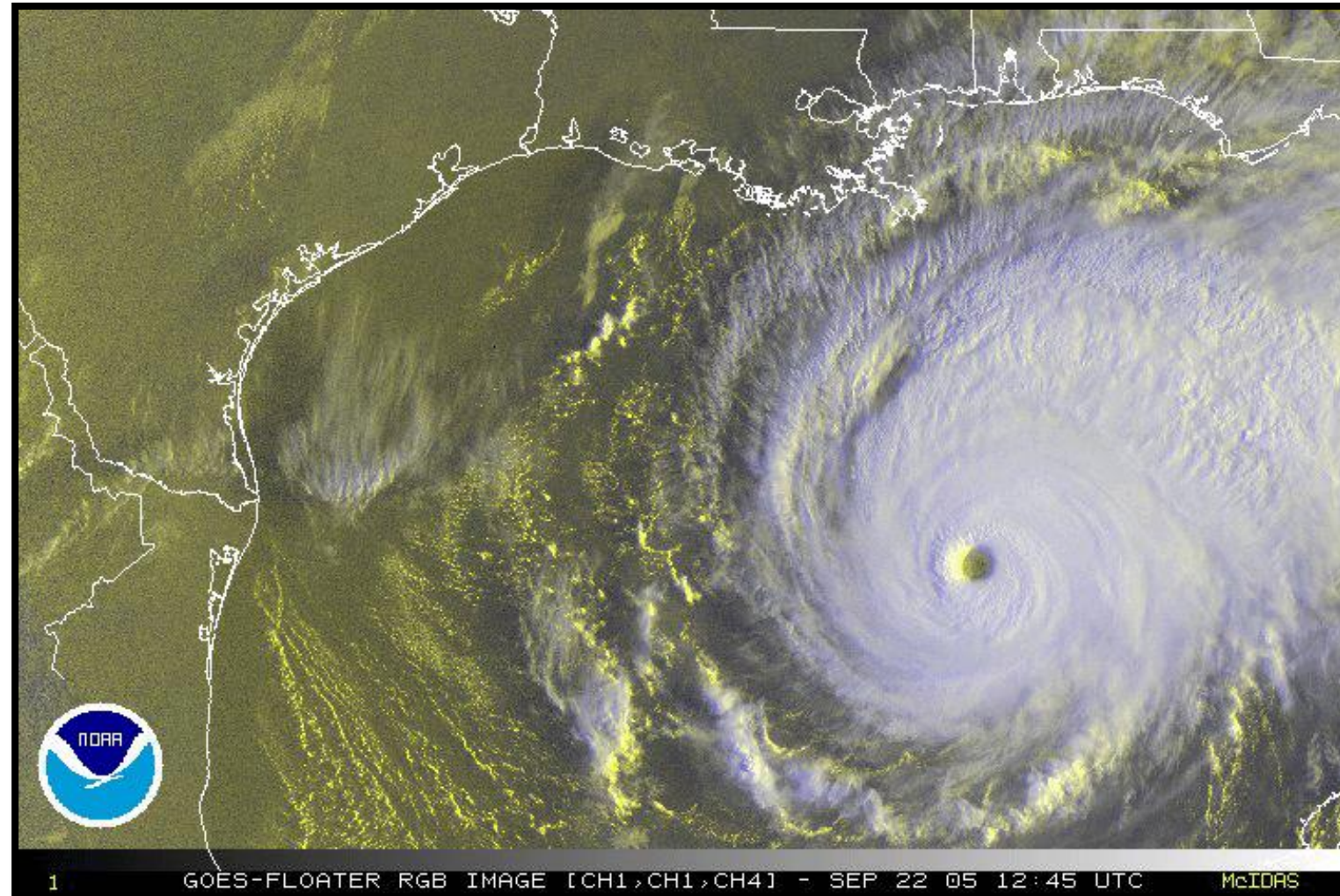
NWSLakeCharles



National Weather Service
Lake Charles, Louisiana

Hazards of Tropical Cyclones

1. Storm Surge
2. Heavy Rain
3. Damaging Winds
4. Tornadoes



weather.gov/lch



NWSLakeCharles



@NWSLakeCharles

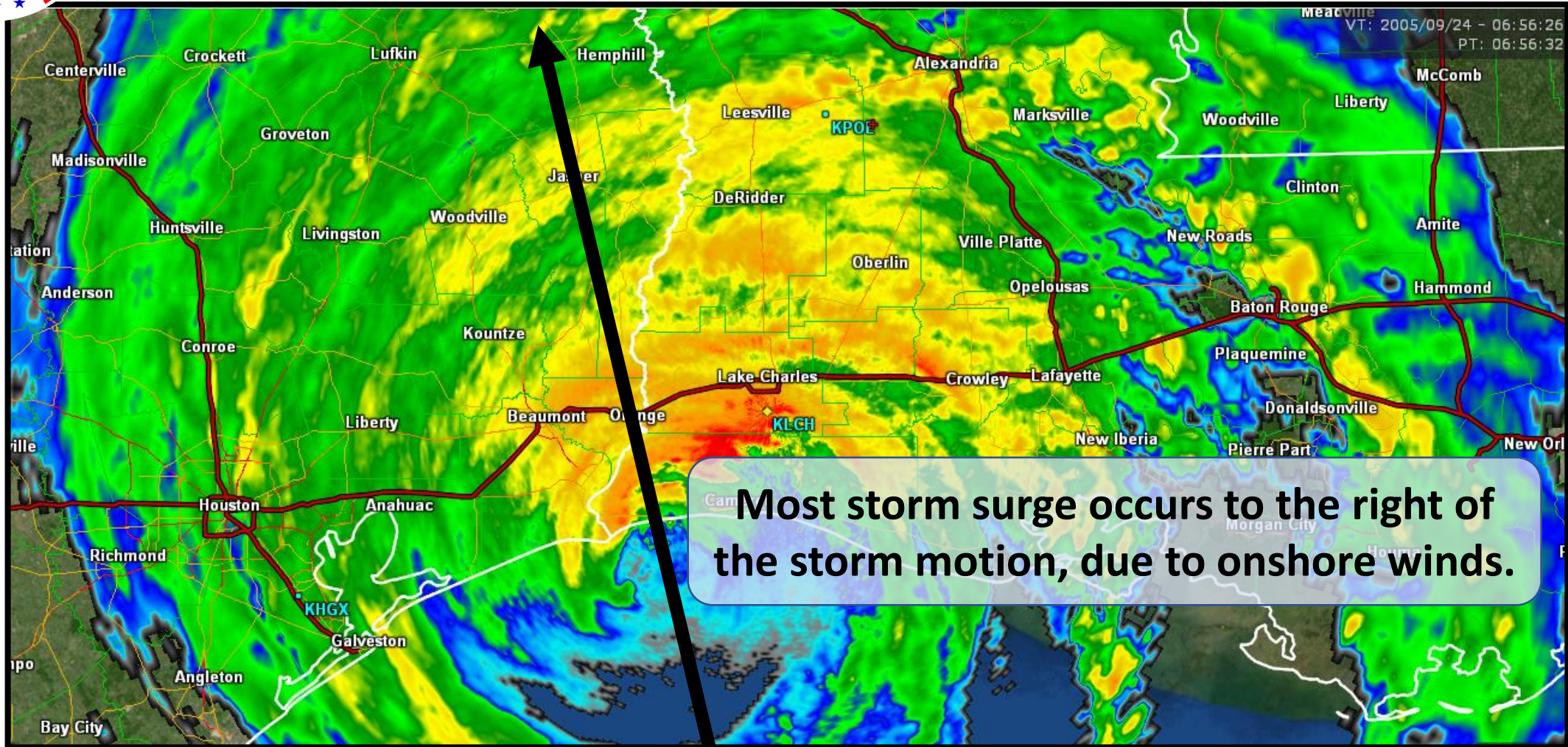


NWSLakeCharles



National Weather Service
Lake Charles, Louisiana

Storm Surge



weather.gov/lch



NWSLakeCharles



@NWSLakeCharles

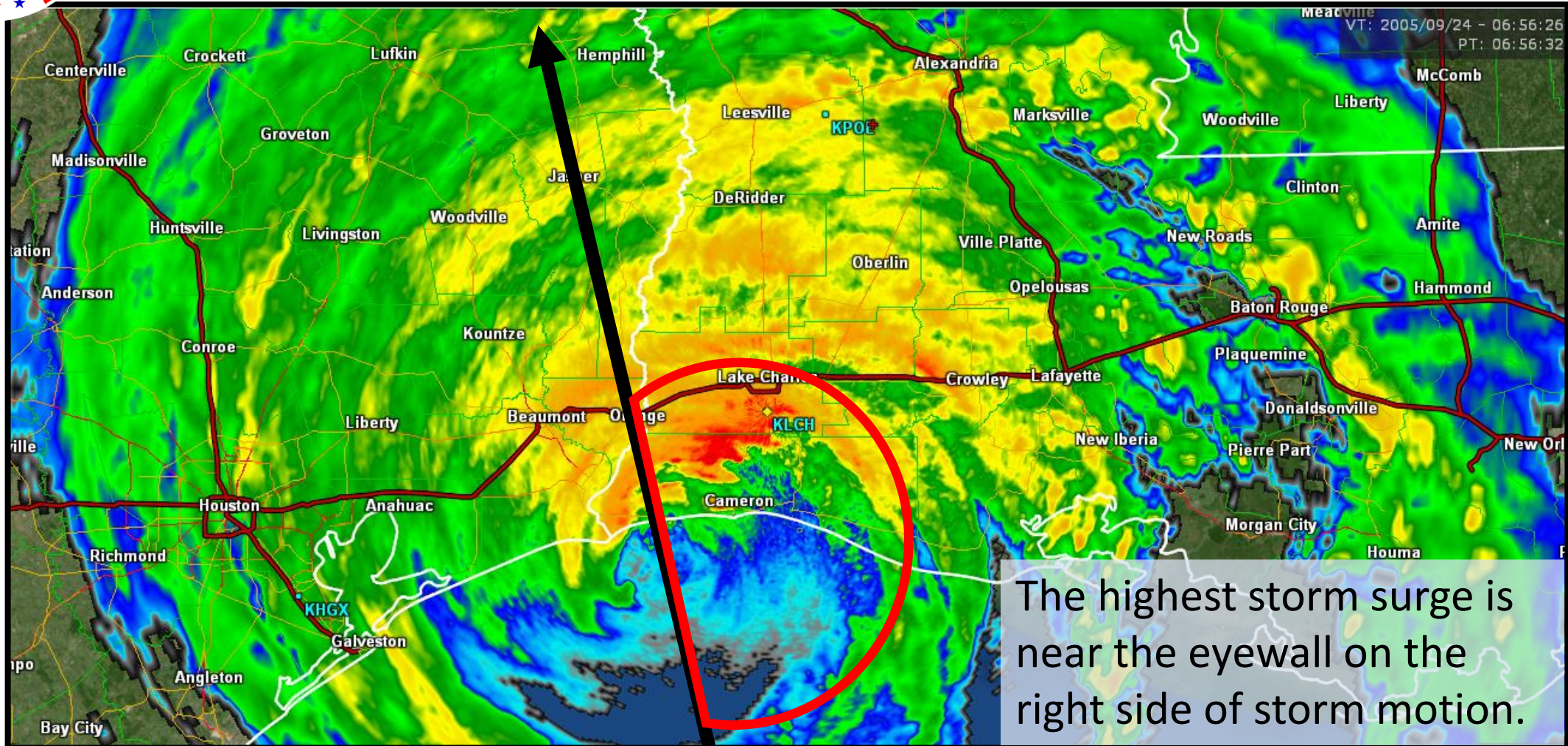


NWSLakeCharles



National Weather Service
Lake Charles, Louisiana

Storm Surge



weather.gov/lch



NWSLakeCharles



@NWSLakeCharles

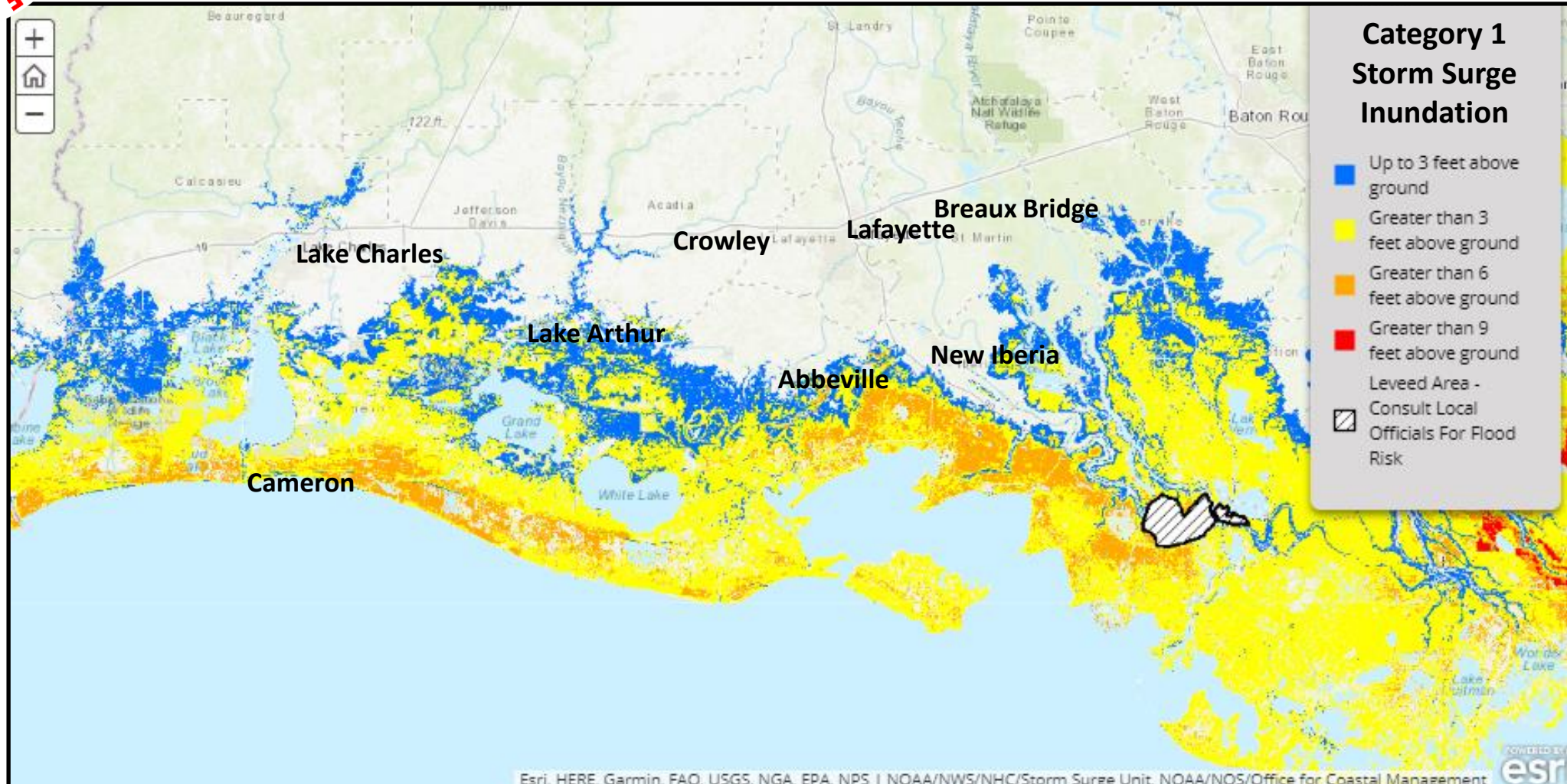


NWSLakeCharles



National Weather Service
Lake Charles, Louisiana

Storm Surge Worst Case Scenarios



weather.gov/lch



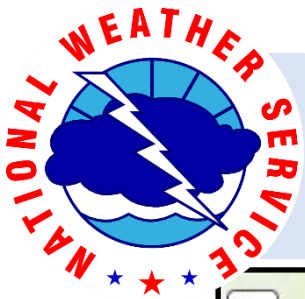
NWSLakeCharles



@NWSLakeCharles

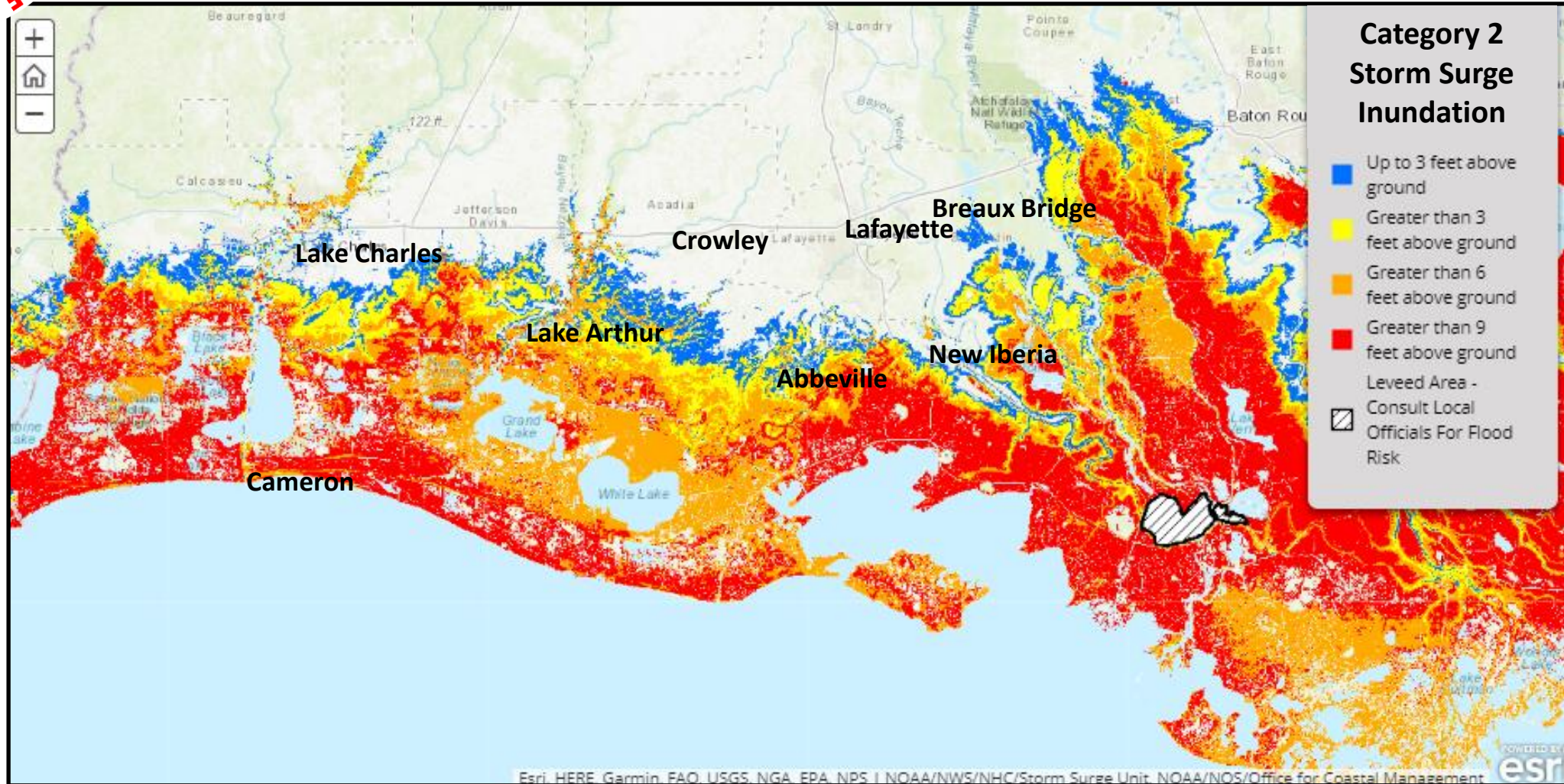


NWSLakeCharles



National Weather Service
Lake Charles, Louisiana

Storm Surge Worst Case Scenarios



weather.gov/lch



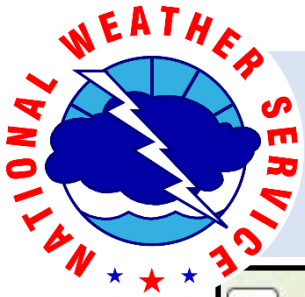
NWSLakeCharles



@NWSLakeCharles

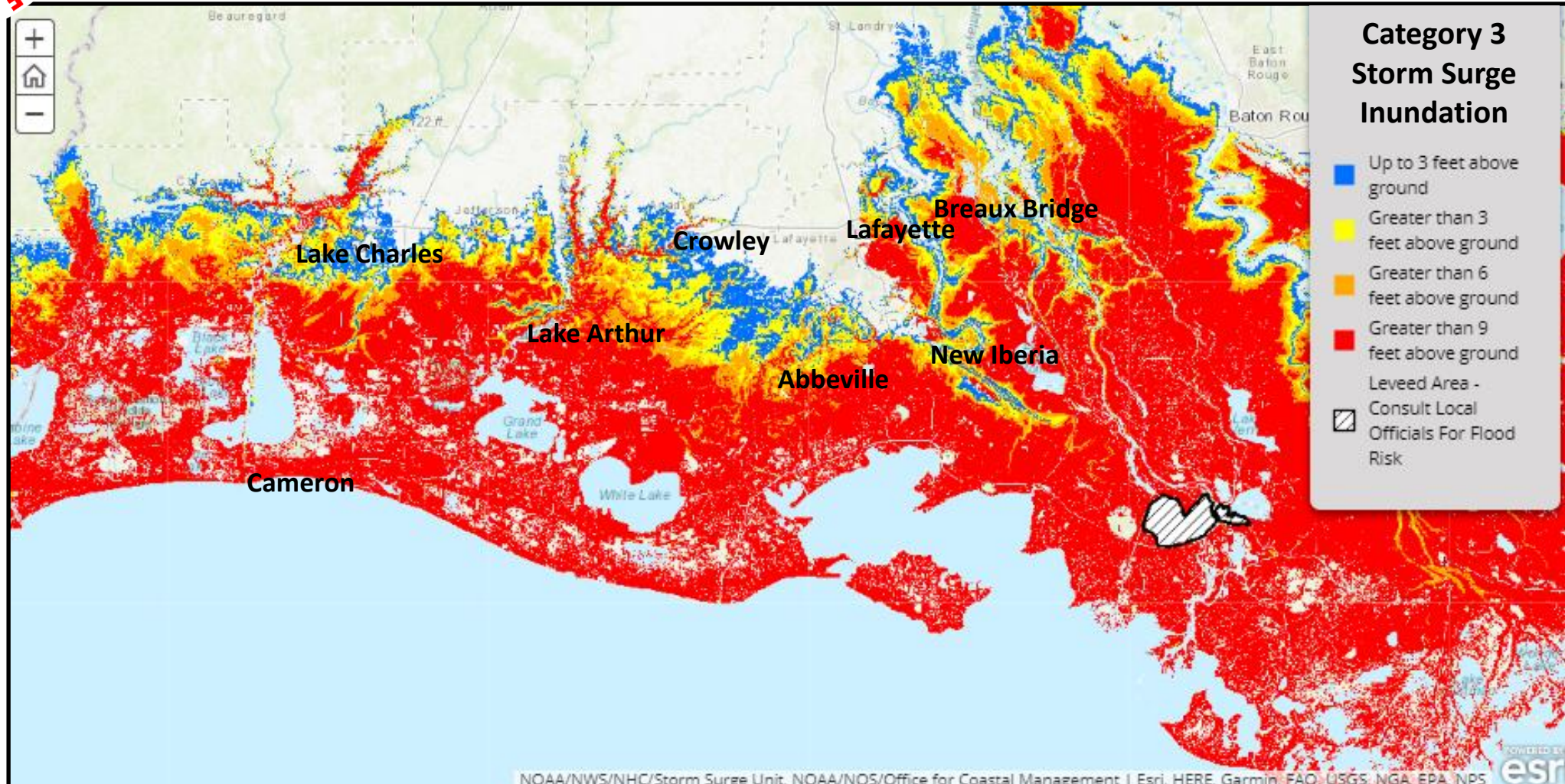


NWSLakeCharles



National Weather Service
Lake Charles, Louisiana

Storm Surge Worst Case Scenarios



weather.gov/lch



NWSLakeCharles



@NWSLakeCharles

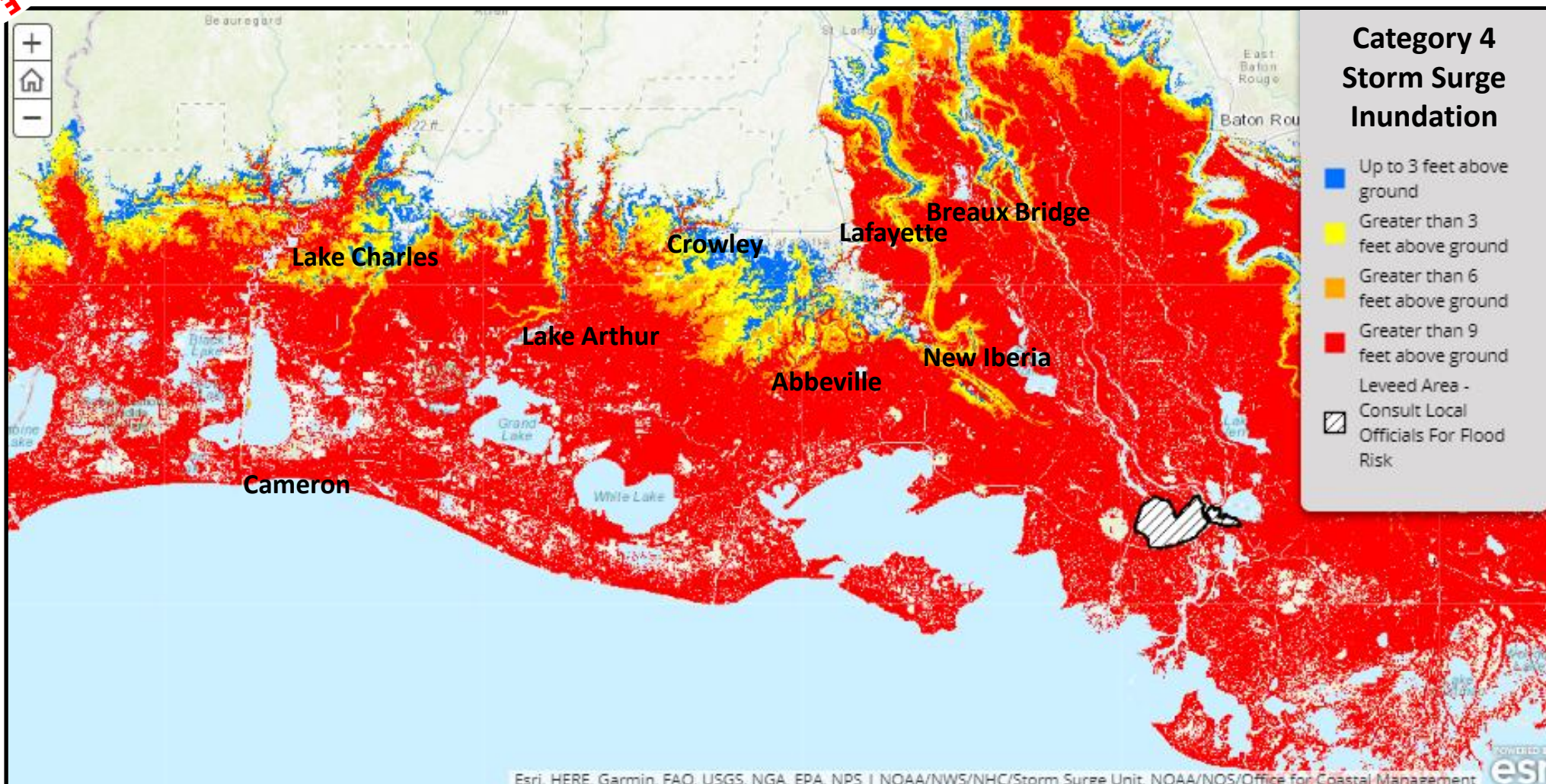


NWSLakeCharles



National Weather Service
Lake Charles, Louisiana

Storm Surge Worst Case Scenarios



weather.gov/lch



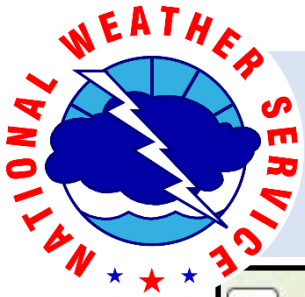
NWSLakeCharles



@NWSLakeCharles

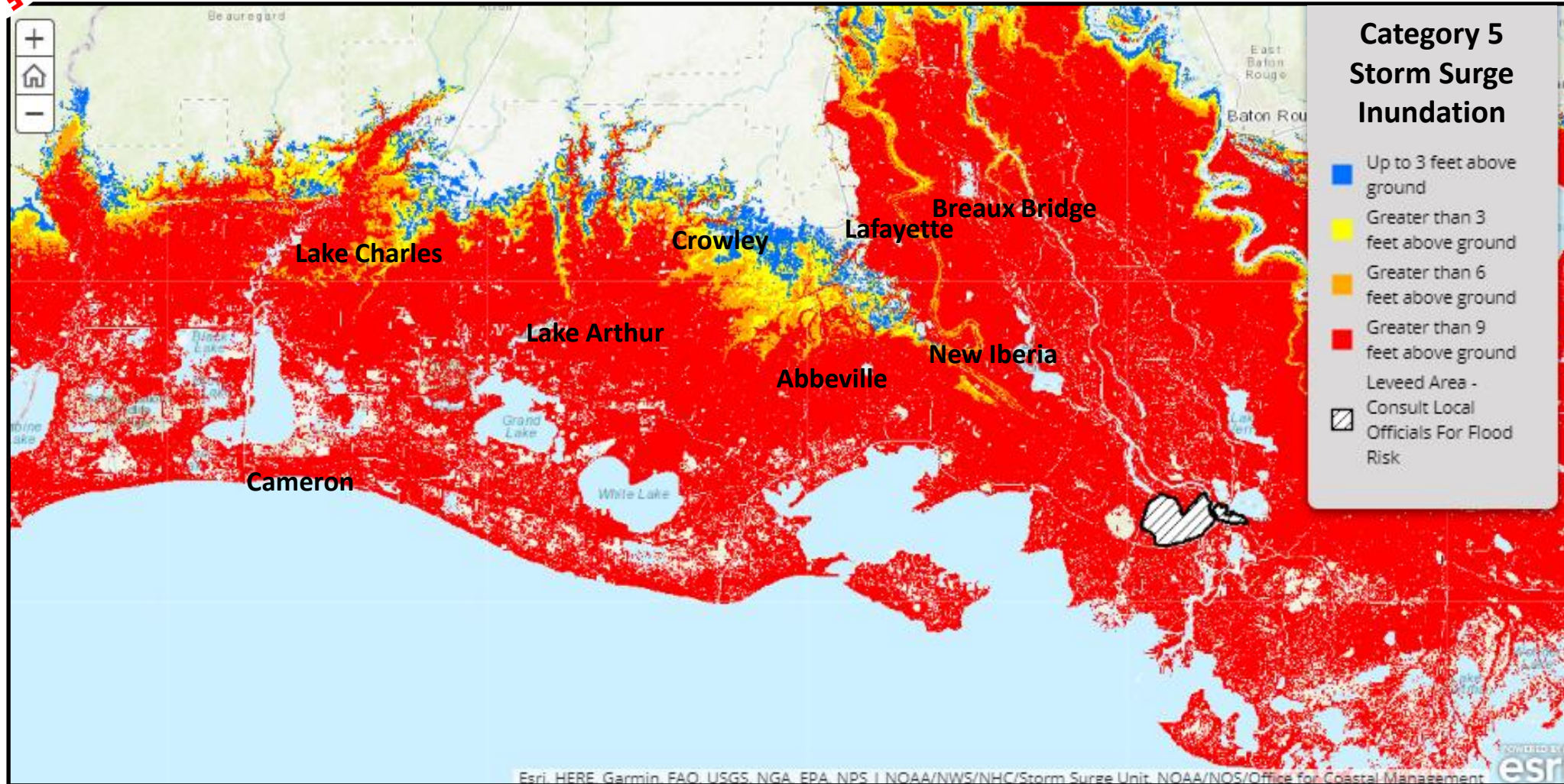


NWSLakeCharles



National Weather Service
Lake Charles, Louisiana

Storm Surge Worst Case Scenarios



weather.gov/lch



NWSLakeCharles



@NWSLakeCharles

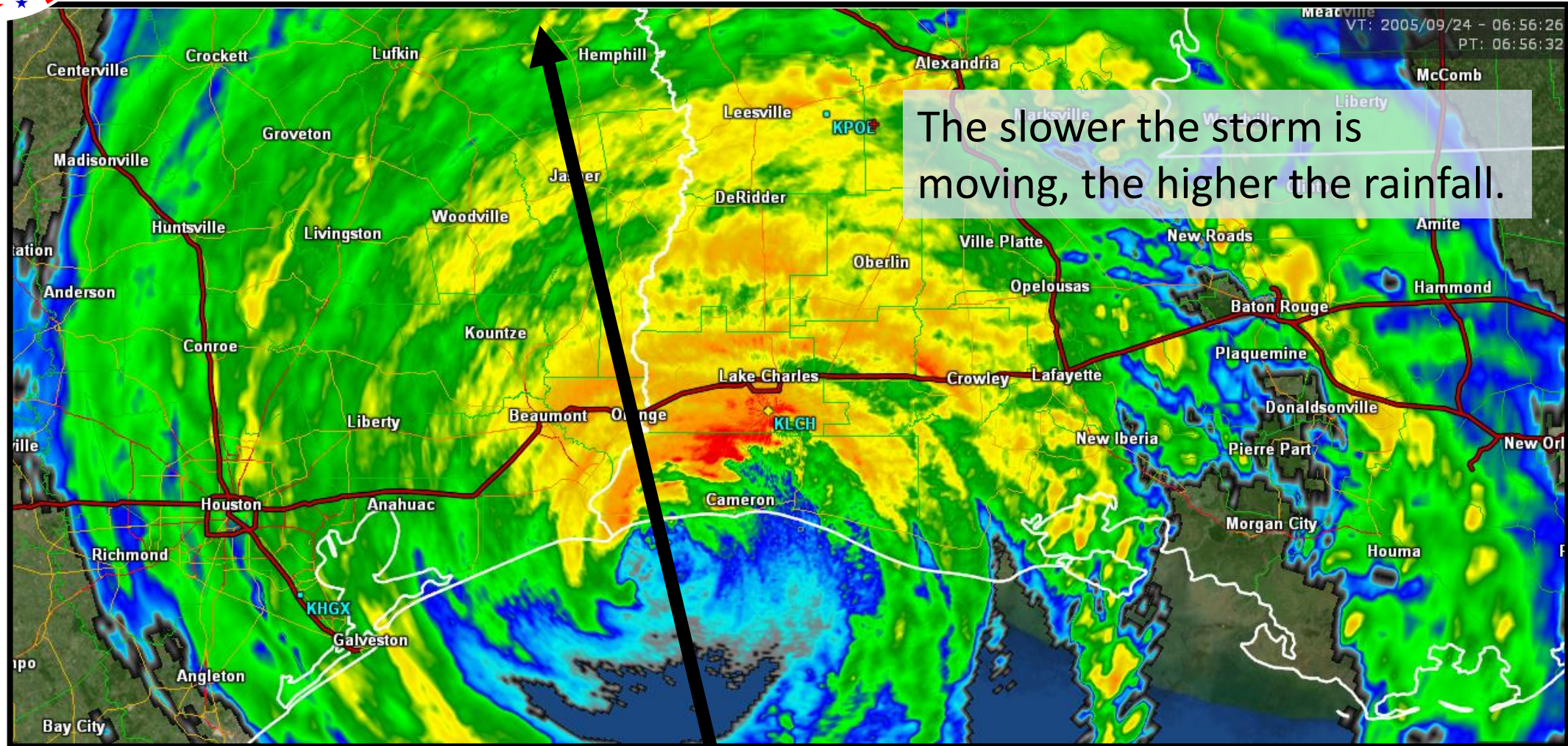


NWSLakeCharles



National Weather Service
Lake Charles, Louisiana

Rainfall



weather.gov/lch



NWSLakeCharles



@NWSLakeCharles

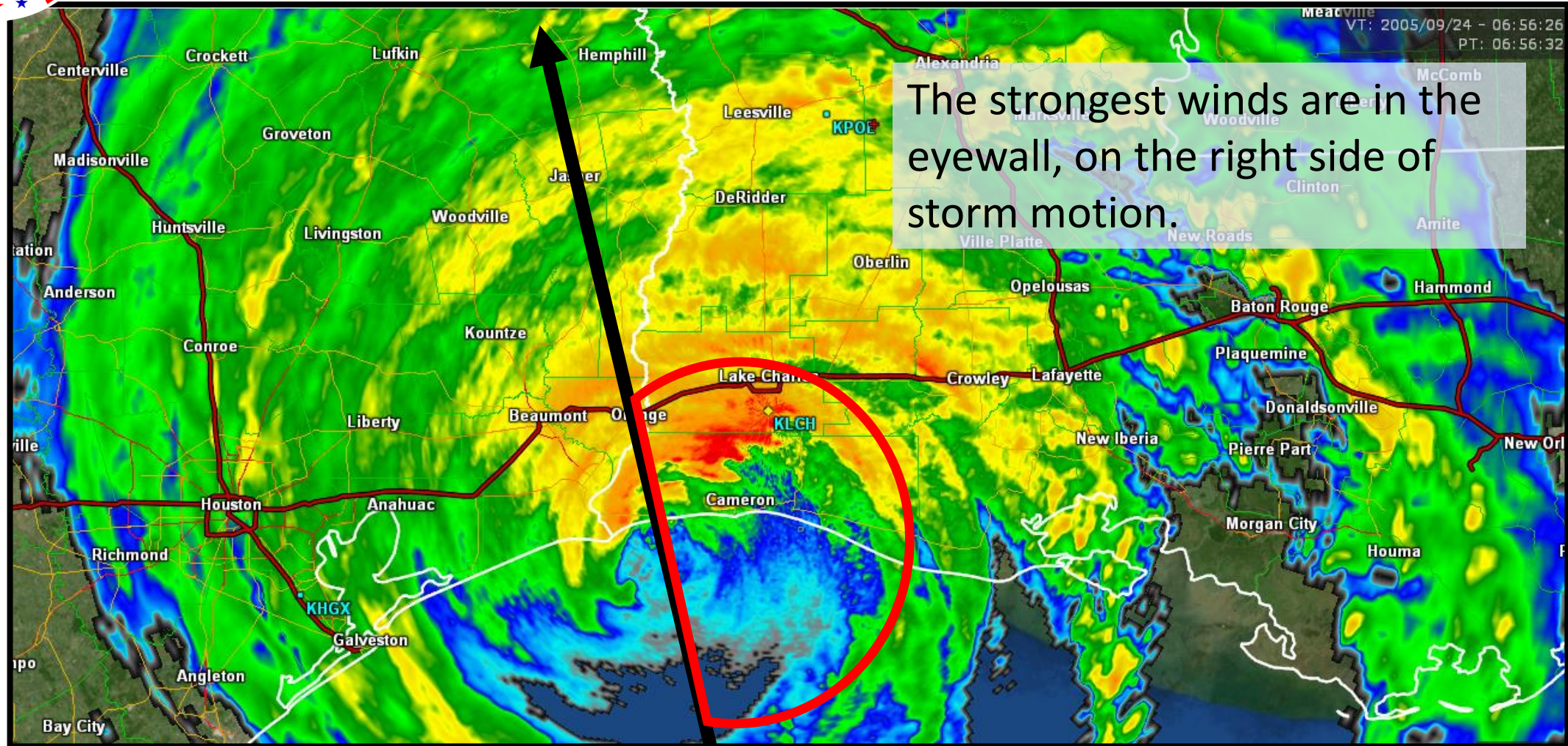


NWSLakeCharles



National Weather Service
Lake Charles, Louisiana

Damaging Winds



weather.gov/lch



NWSLakeCharles



@NWSLakeCharles

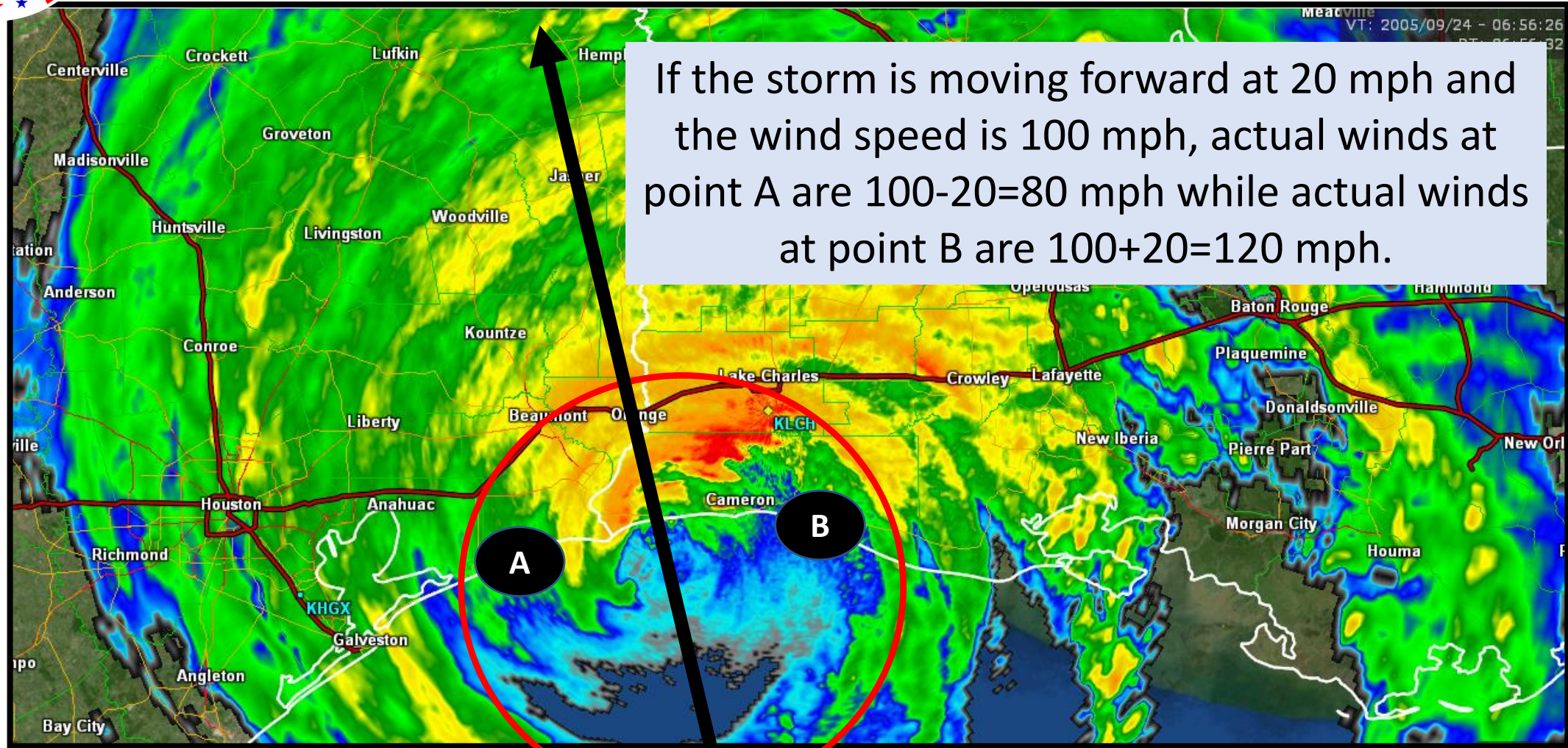


NWSLakeCharles



National Weather Service
Lake Charles, Louisiana

Damaging Winds



weather.gov/lch



NWSLakeCharles



@NWSLakeCharles

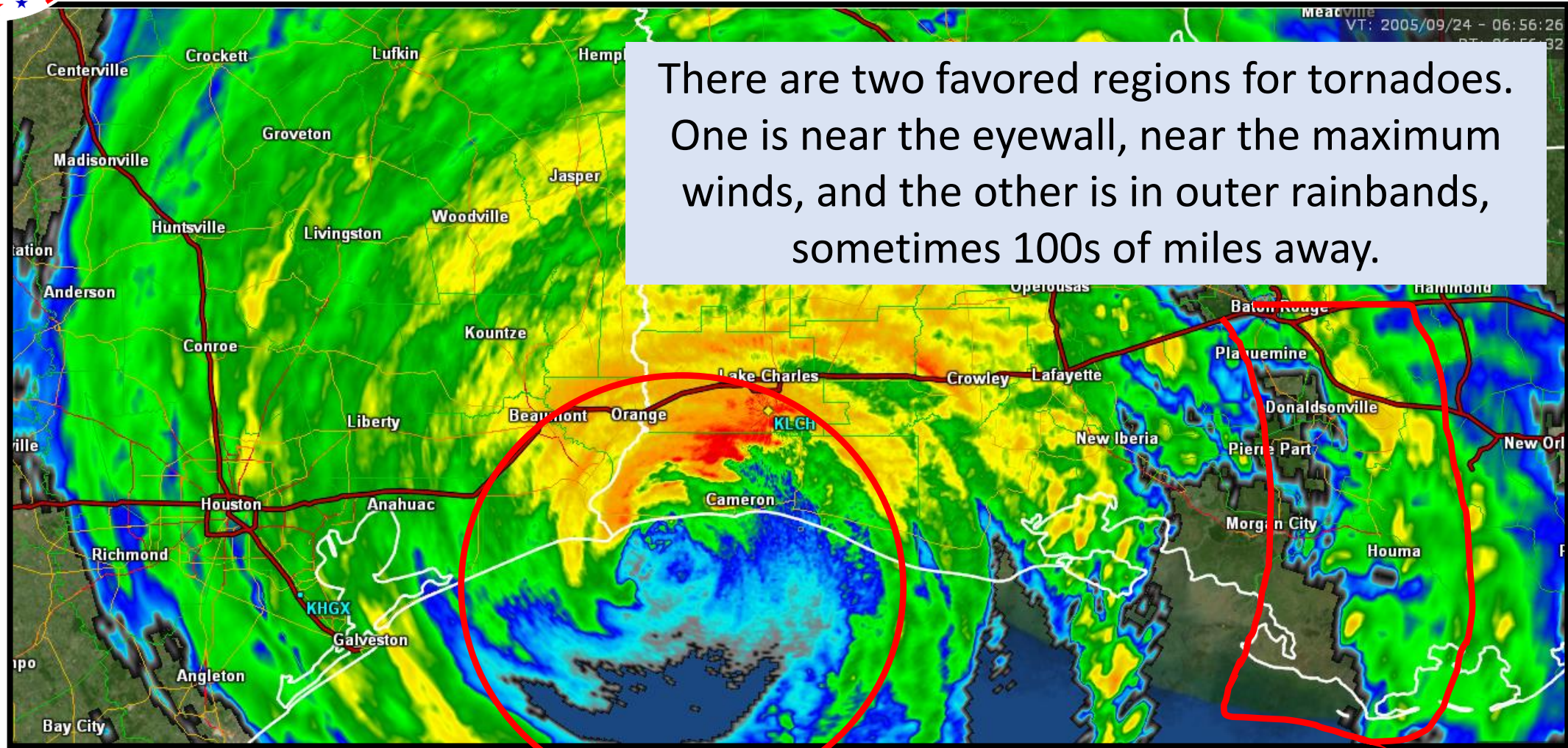


NWSLakeCharles



National Weather Service
Lake Charles, Louisiana

Tornadoes



weather.gov/lch



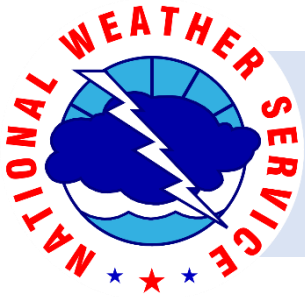
NWSLakeCharles



@NWSLakeCharles



NWSLakeCharles



National Weather Service
Lake Charles, Louisiana

2020 Changes

NWS Wireless Emergency Alerts (WEA) related to Hurricane Season

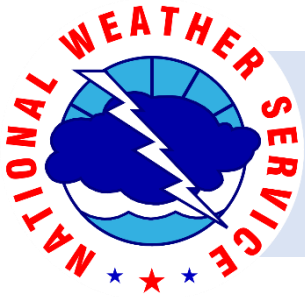
Hurricane Warning: (current)

NWS: HURRICANE WARNING this area. Check media and local authorities.

Hurricane Warning: (changing to Fall 2020)

National Weather Service: A HURRICANE WARNING is in effect for this area for dangerous and damaging winds. This warning is issued up to 36 hours before hazardous conditions begin. Urgently complete efforts to protect life and property. Have food, water, cash, fuel, and medications for 3+ days. FOLLOW INSTRUCTIONS FROM LOCAL OFFICIALS.





National Weather Service
Lake Charles, Louisiana

2020 Changes

NWS Wireless Emergency Alerts (WEA) related to Hurricane Season

Extreme Wind Warning: (current)

NWS: EXTREME WIND WARNING this area til 11:35PM CDT. Take shelter now.

Extreme Wind Warning: (changing to Fall 2020)

National Weather Service: An EXTREME WIND WARNING is in effect for this area for the immediate danger of life-threatening winds til 11:35PM EDT. Take cover NOW in an interior room of a sturdy building, away from windows. Protect your head from flying debris. Do NOT go out in the calm of the hurricane eye! Winds will quickly become dangerous again.





National Weather Service
Lake Charles, Louisiana

2020 Changes

NWS Wireless Emergency Alerts (WEA) related to Hurricane Season

Tornado Warning: (current)

NWS: TORNADO WARNING in this area til 10:30AM CDT. Take shelter now. Check media.

Tornado Warning: (changing to Fall 2020)

National Weather Service: TORNADO WARNING in this area until 12:15PM CST. Take shelter now in a basement or an interior room on the lowest floor of a sturdy building. If you are outdoors, in a mobile home, or in a vehicle, move to the closest substantial shelter and protect yourself from flying debris. Check media.





National Weather Service
Lake Charles, Louisiana

2020 Changes

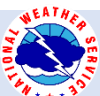
NWS Wireless Emergency Alerts (WEA) related to Hurricane Season

Tornado Emergency: (current)

NWS: TORNADO EMERGENCY til 10:45AM CDT. Tornado spotted in this area. Take shelter now!

Tornado Emergency: (changing to Fall 2020)

National Weather Service: TORNADO EMERGENCY until 10:45PM MDT. Tornado spotted in this area. This is a life-threatening situation. Take shelter now in a basement or an interior room on the lowest floor of a sturdy building. If you are outdoors, in a mobile home, or in a vehicle move to the closest substantial shelter and protect yourself from flying debris.





National Weather Service
Lake Charles, Louisiana

2020 Changes

NWS Wireless Emergency Alerts (WEA) related to Hurricane Season

Flash Flood Warning: (current)

NWS: FLASH FLOOD WARNING this area til 9:00PM CDT. Avoid flooded areas.

Flash Flood Warning: (changing to Fall 2020)

National Weather Service: A FLASH FLOOD WARNING is in effect for this area until 6:00AM EDT. This is a dangerous and life-threatening situation. Do not attempt to travel unless you are fleeing an area subject to flooding or under an evacuation order.





National Weather Service
Lake Charles, Louisiana

2020 Changes

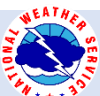
NWS Wireless Emergency Alerts (WEA) related to Hurricane Season

Flash Flood Emergency: (current)

NWS: FLASH FLOOD EMERGENCY this area til 9:00PM CDT. Avoid flooded areas.

Flash Flood Emergency: (changing to Fall 2020)

National Weather Service: A FLASH FLOOD EMERGENCY is in effect for this area until 11:00AM EDT. This is an extremely dangerous and life-threatening situation. Do not attempt to travel unless you are fleeing an area subject to flooding or under an evacuation order.





National Weather Service
Lake Charles, Louisiana

2020 Changes

NWS Wireless Emergency Alerts (WEA) related to Hurricane Season

Storm Surge Warning: (current)

NWS: Life-threatening STORM SURGE danger. FOLLOW THE INSTRUCTIONS OF LOCAL OFFICIALS.

Storm Surge Warning: (changing to Fall 2020)

National Weather Service: A STORM SURGE WARNING is in effect for this area for the danger of life-threatening flooding. This warning is issued up to 36 hours before hazardous conditions begin. Urgently complete efforts to protect life and property. Follow evacuation orders if given for this area to avoid drowning or being cut off from emergency services.



weather.gov/lch



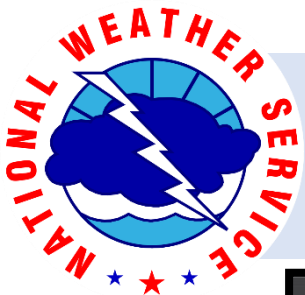
NWSLakeCharles



@NWSLakeCharles

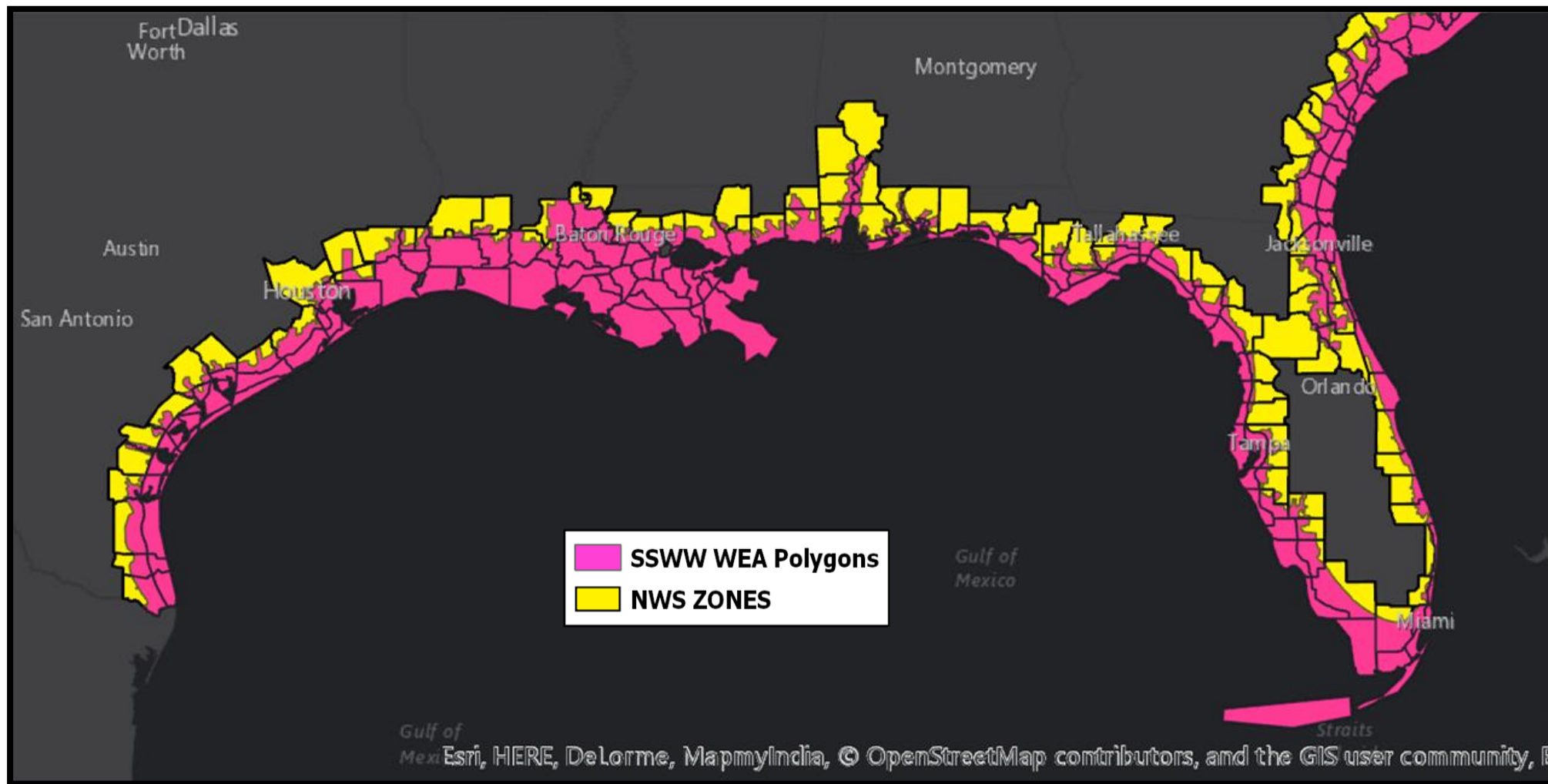


NWSLakeCharles



National Weather Service
Lake Charles, Louisiana

Inland Extent of Storm Surge Watch/Warnings



weather.gov/lch



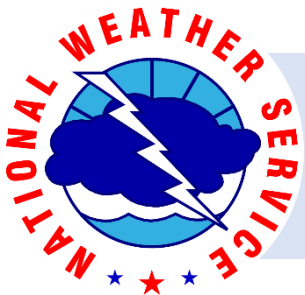
NWSLakeCharles



@NWSLakeCharles



NWSLakeCharles

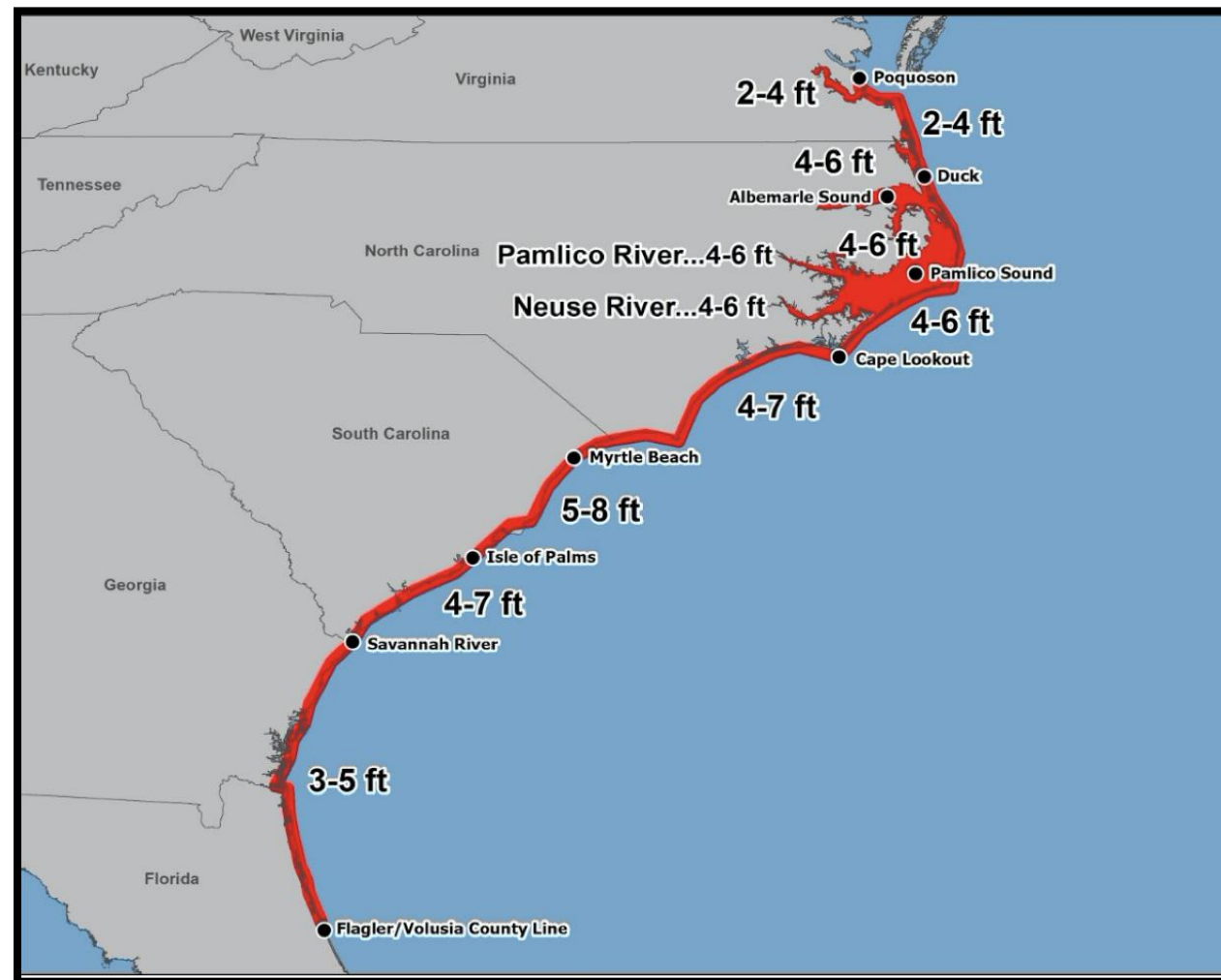


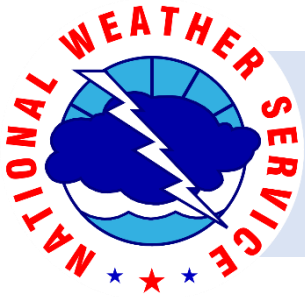
National Weather Service
Lake Charles, Louisiana

Graphical Depiction of Storm Surge Values

Graphical depiction of the peak storm surge inundation values along the coast.

Values represent the peak height the water could reach above normally dry ground somewhere within the specified area.



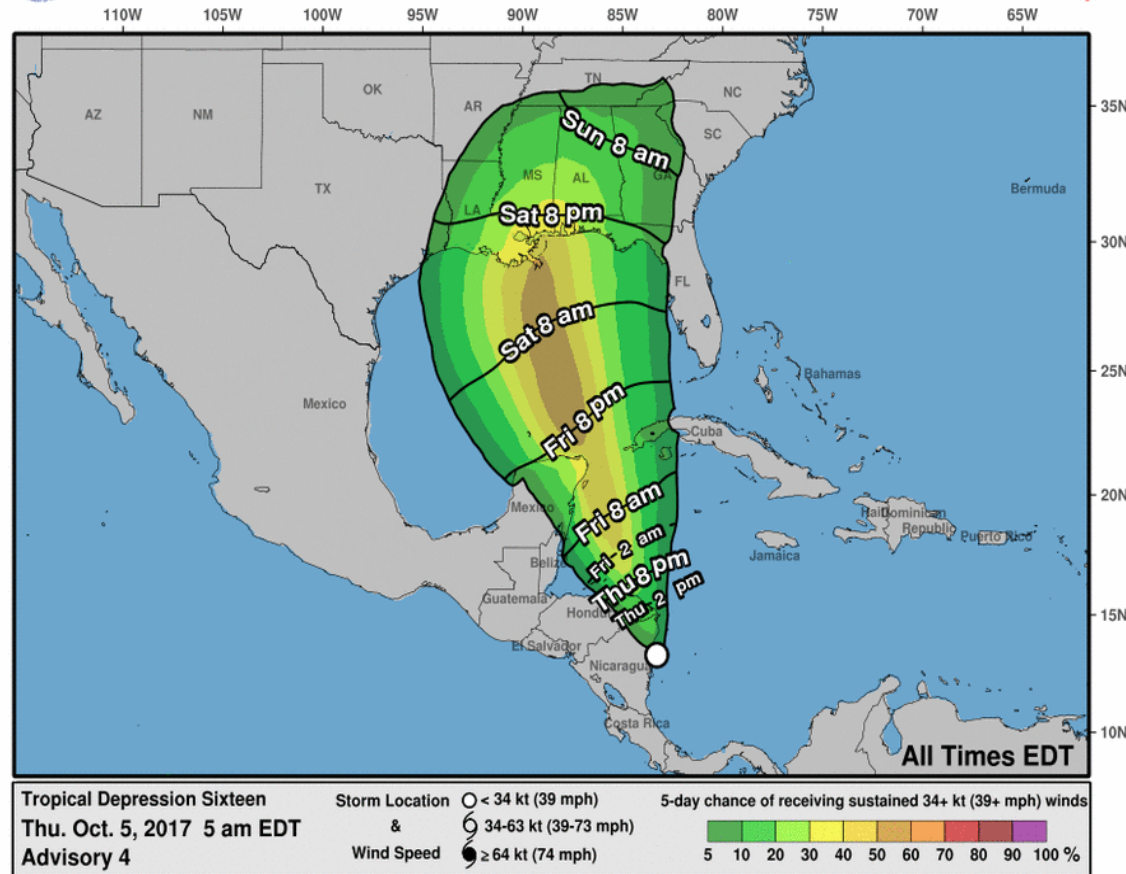


National Weather Service
Lake Charles, Louisiana

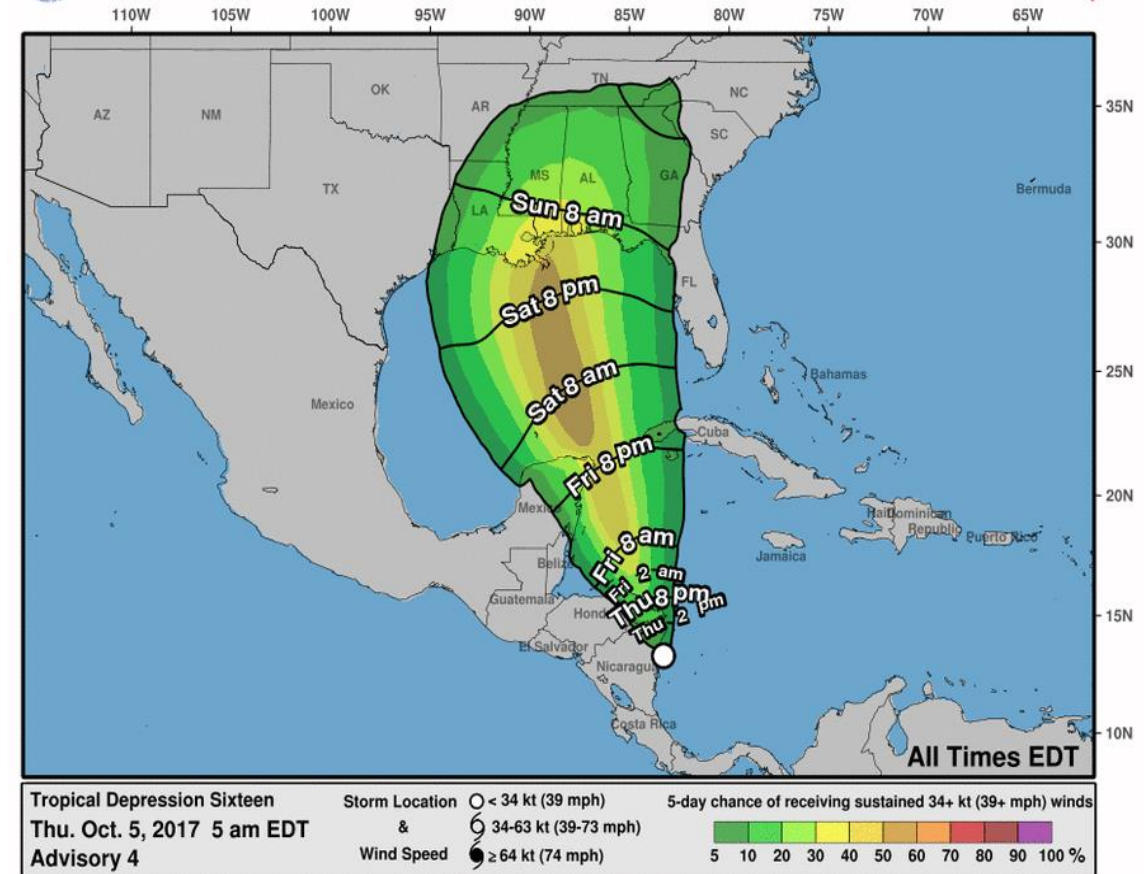
Time of Arrival Graphics



Earliest Reasonable Arrival Time of Tropical-Storm-Force Winds



Most Likely Arrival Time of Tropical-Storm-Force Winds



weather.gov/lch



NWSLakeCharles



@NWSLakeCharles



NWSLakeCharles



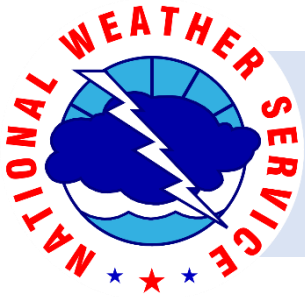
National Weather Service
Lake Charles, Louisiana

Tropical Cyclone Watch/Warning

* WIND

- LATEST LOCAL FORECAST: Equivalent Cat 2 Hurricane force wind
 - Peak Wind Forecast: 80-100 mph with gusts to 120 mph
 - Window for Tropical Storm force winds: until early Sunday morning
 - Window for Hurricane force winds: Saturday morning until early Sunday morning
- POTENTIAL THREAT TO LIFE AND PROPERTY: Potential for wind greater than 110 mph
 - The wind threat has remained nearly steady from the previous assessment.
 - **PLAN**: Plan for extreme wind of equivalent CAT 3 hurricane force or higher due to possible forecast changes in track, size, or intensity.
 - **PREPARE**: Last minute efforts should solely focus on protecting life. The area remains subject to catastrophic wind damage.
 - **ACT**: Now is the time to shelter from life-threatening wind. Be ready to move to the safest place inside your shelter if necessary.



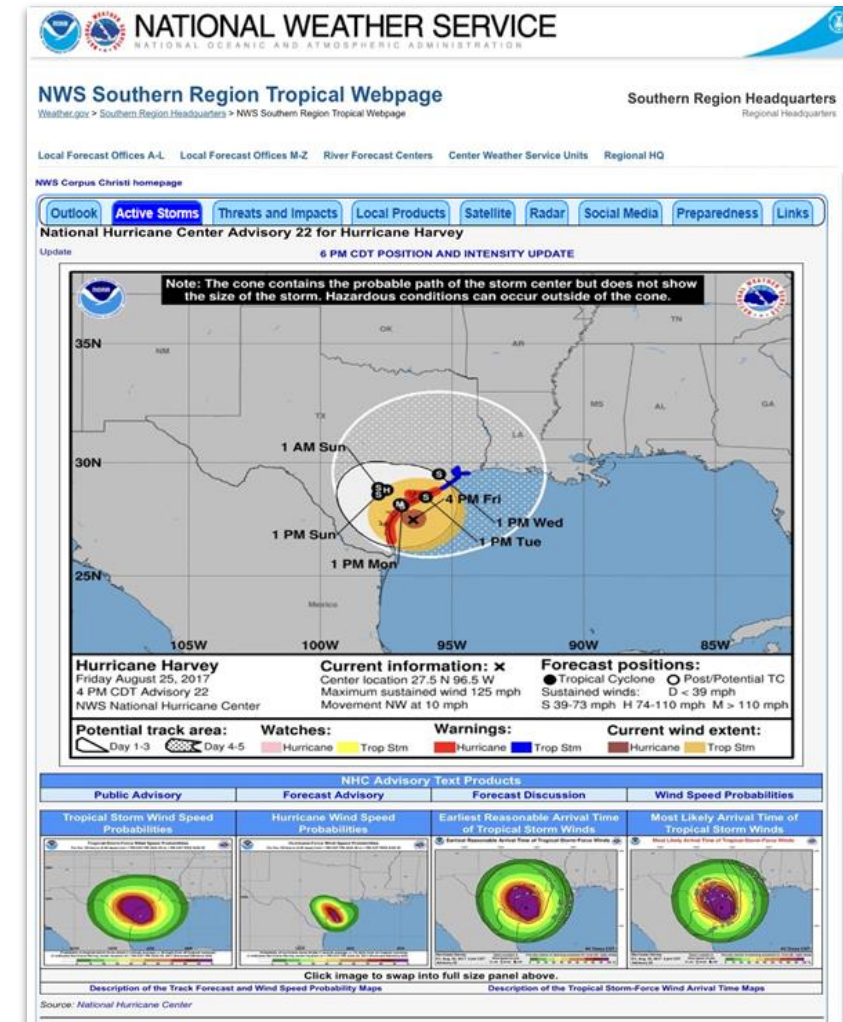


National Weather Service
Lake Charles, Louisiana

Local Tropical Webpage

- **Tropical Weather Outlook** – updates 7 & 3 am and pm
- **Active Storms** – only when a system threatening us
- **Threats and Impacts** – wind, surge, rain, tornado
- **Local Products** – only when a system threatening us
- **Satellite** – always current
- **Radar** – always current
- **Social Media** – always current
- **Preparedness**
- **Links**

<https://www.weather.gov/srh/tropical?office=lch>



weather.gov/lch



NWSLakeCharles



@NWSLakeCharles

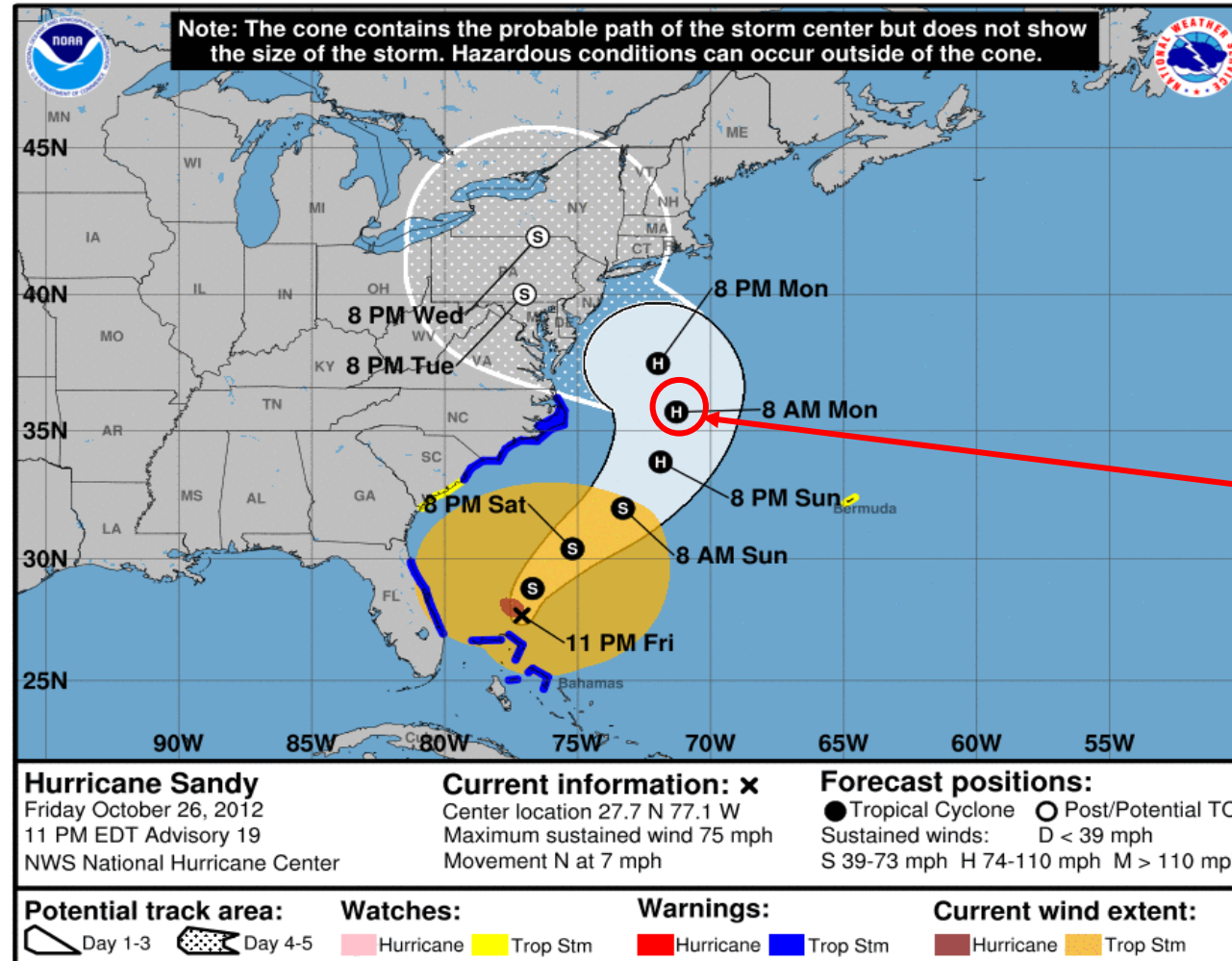


NWSLakeCharles



National Weather Service
Lake Charles, Louisiana

60 Hour Forecast Point Added



60-h forecast
information on
cone graphic



weather.gov/lch



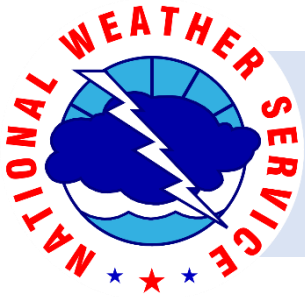
NWSLakeCharles



@NWSLakeCharles

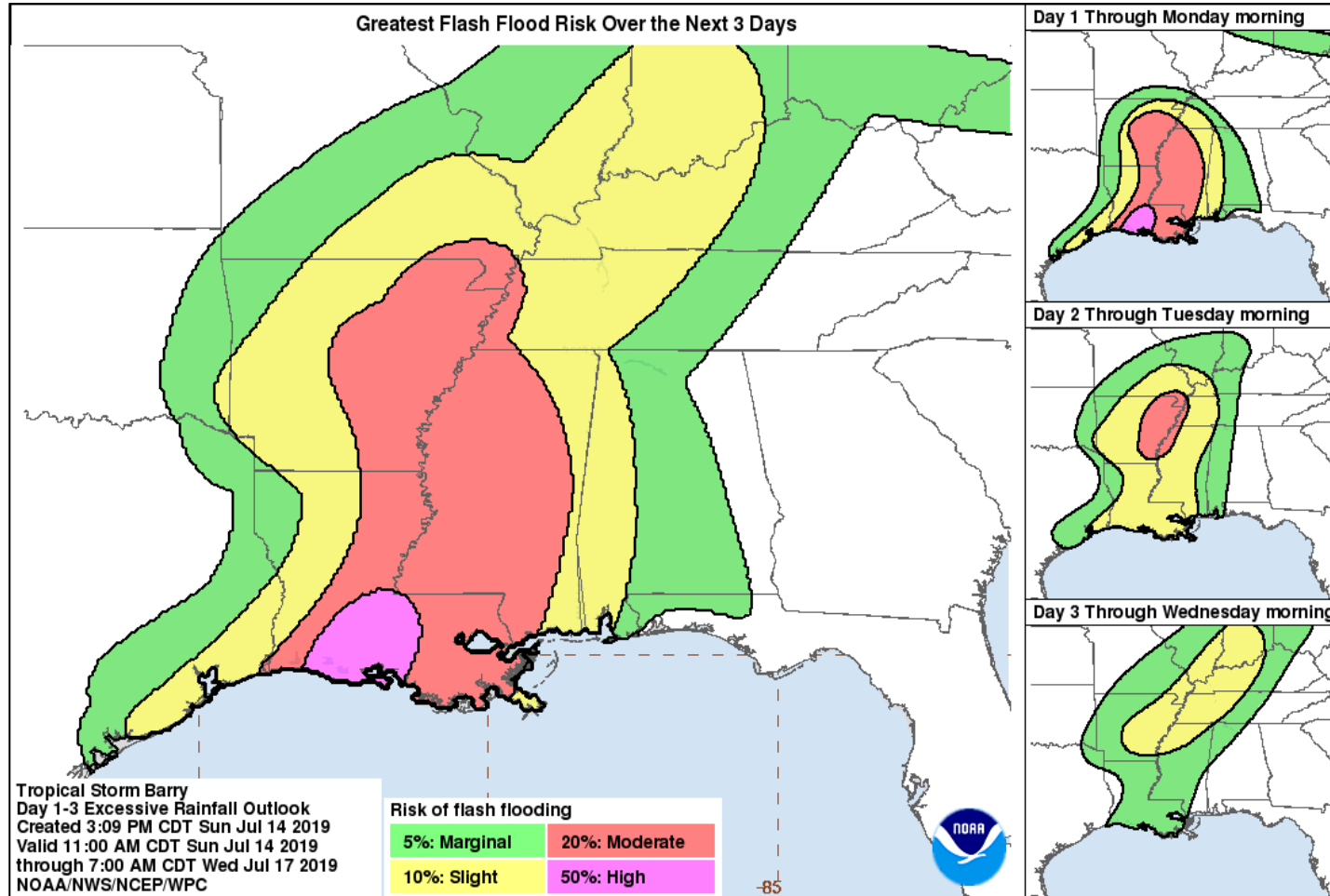


NWSLakeCharles



National Weather Service
Lake Charles, Louisiana

Multi-Day Flash Flood Risk Graphic



weather.gov/lch



NWSLakeCharles



@NWSLakeCharles








NWSLakeCharles



National Weather Service
Lake Charles, Louisiana

Meaning of Flash Flood Risk Graphic

Understanding WPC Excessive Rainfall Risk Categories				
No Area/Label	MARGINAL (MRGL)	SLIGHT (SLGT)	MODERATE (MDT)	HIGH (HIGH)
Flash floods are generally not expected.	Isolated flash floods possible	Scattered flash floods possible	Numerous flash floods likely	Widespread flash floods expected
Localized and primarily affecting places that can experience rapid runoff with heavy rainfall.	Mainly localized. Most vulnerable are urban areas, roads, small streams and washes. Isolated significant flash floods possible.	Numerous flash flooding events with significant events possible. Many streams may flood, potentially affecting larger rivers.	Severe, widespread flash flooding. Areas that don't normally experience flash flooding, could. Lives and property in greater danger.	
www.wpc.ncep.noaa.gov @NWSWPC				
Flash flooding near me?	Flash Flooding			
NO Flash Flooding				
 WEATHER PREDICTION CENTER				



weather.gov/lch



NWSLakeCharles



@NWSLakeCharles

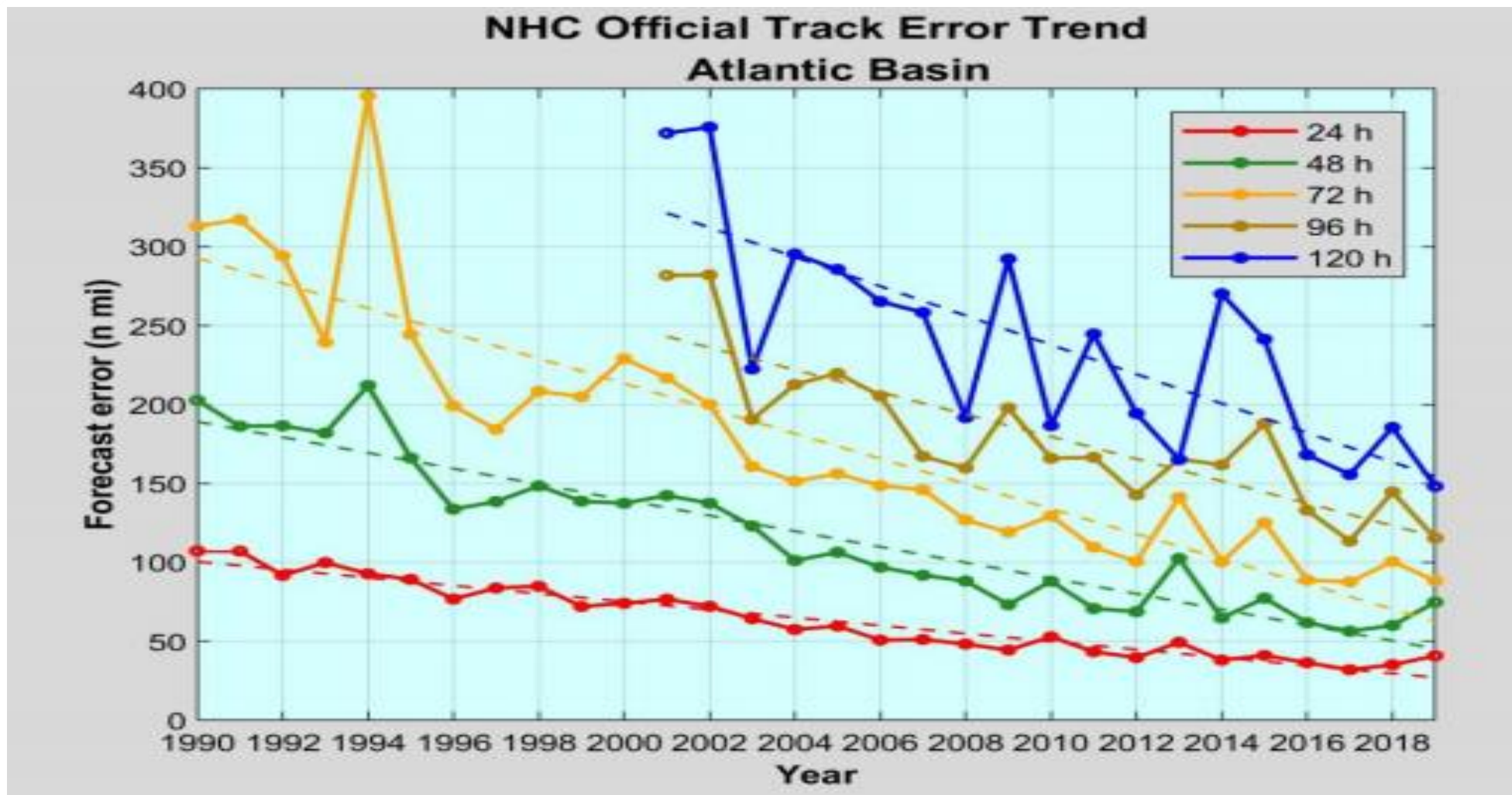


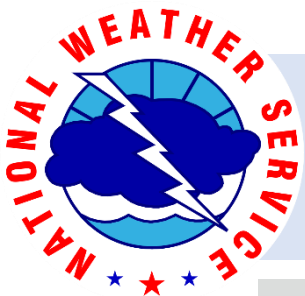
NWSLakeCharles



National Weather Service
Lake Charles, Louisiana

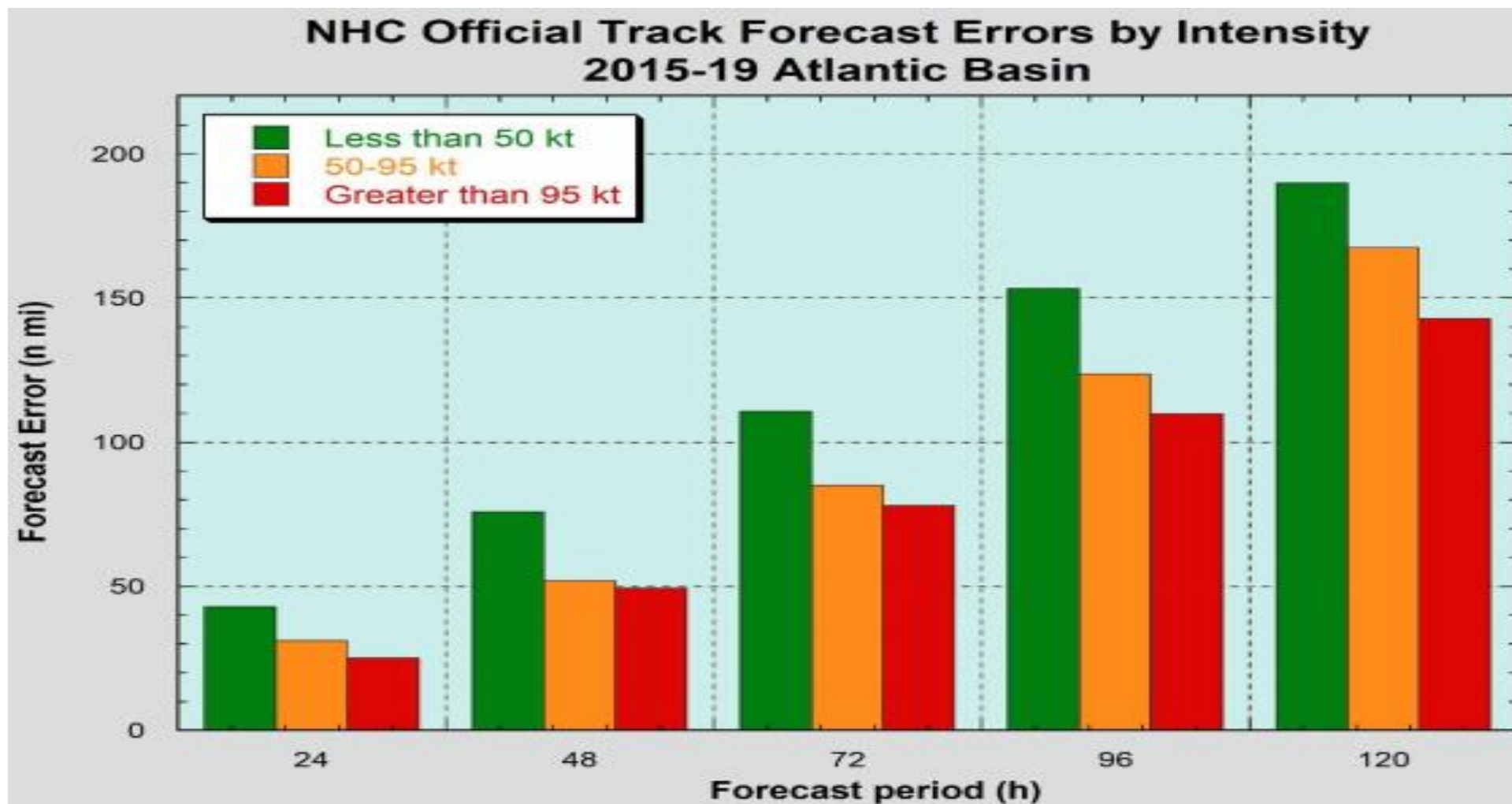
NHC Verification Statistics





National Weather Service
Lake Charles, Louisiana

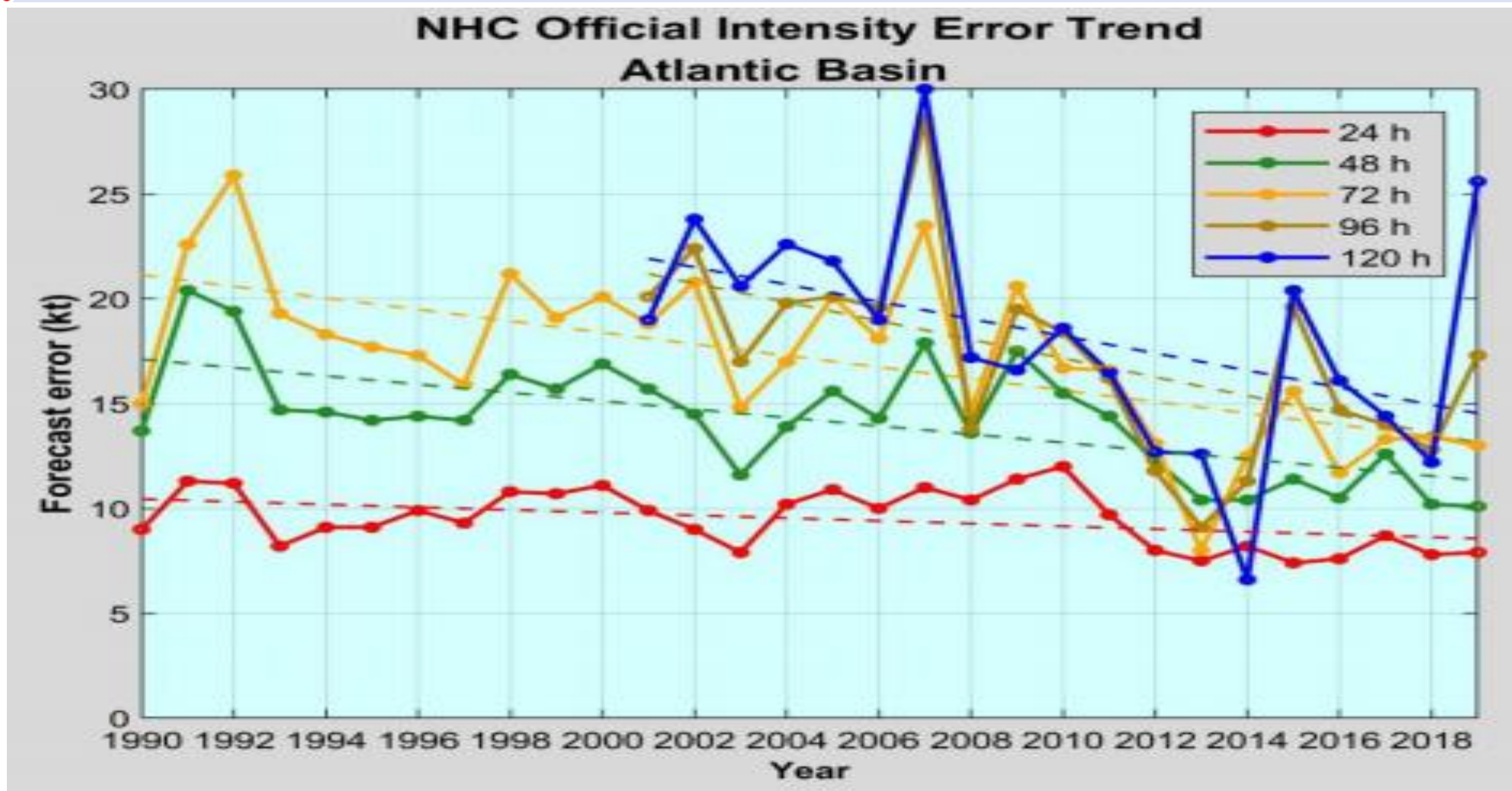
NHC Verification Statistics

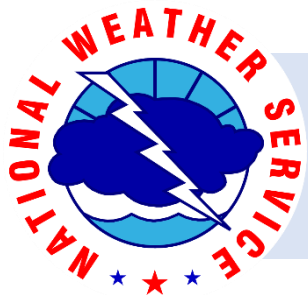




National Weather Service
Lake Charles, Louisiana

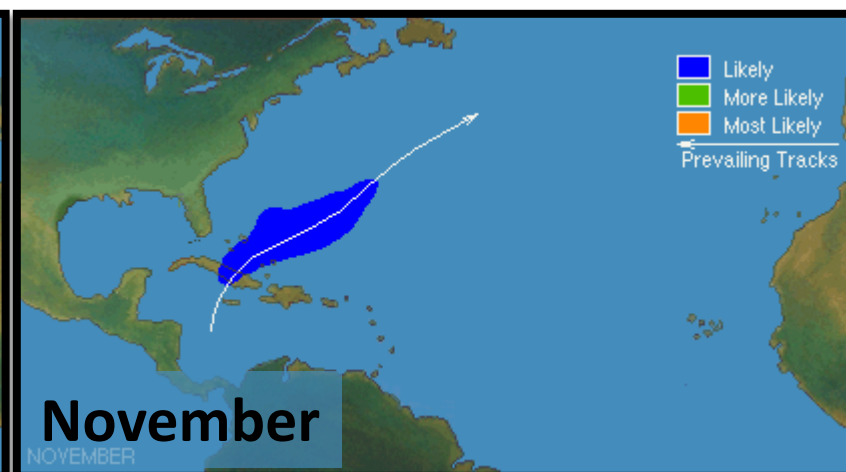
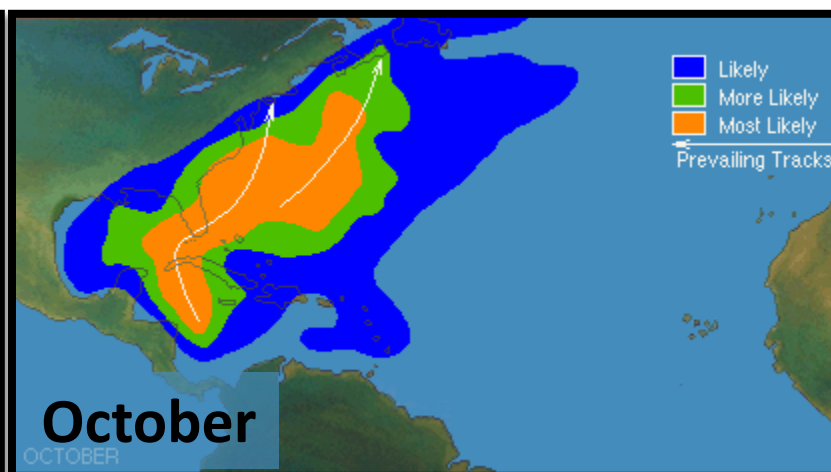
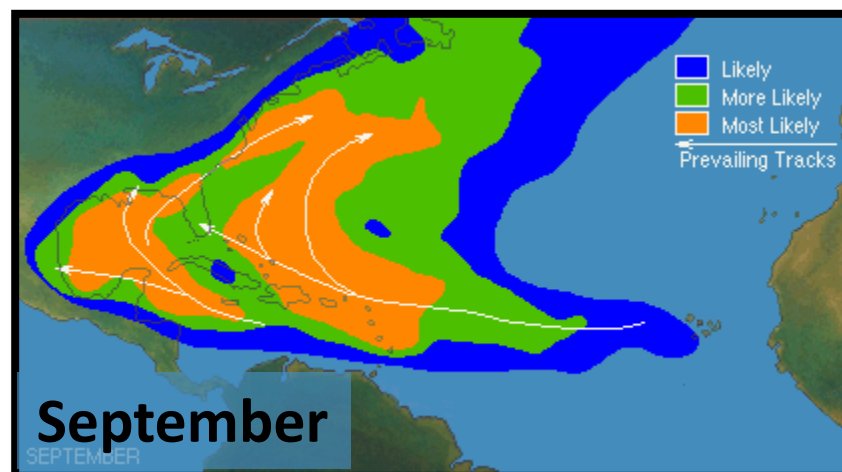
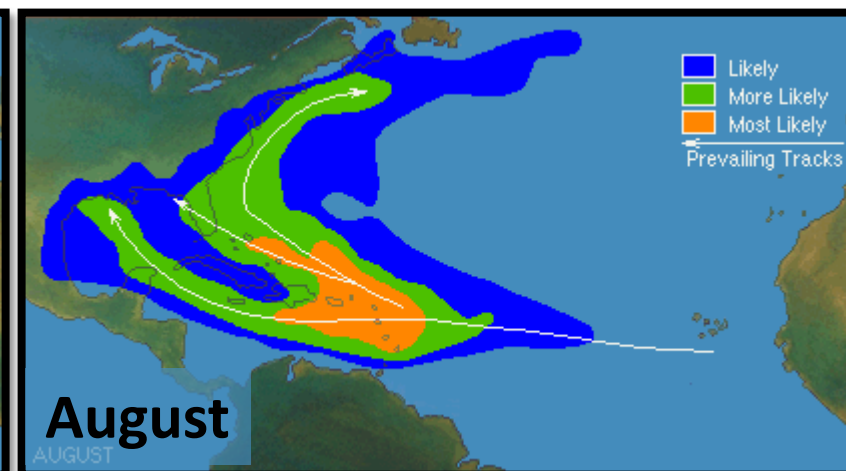
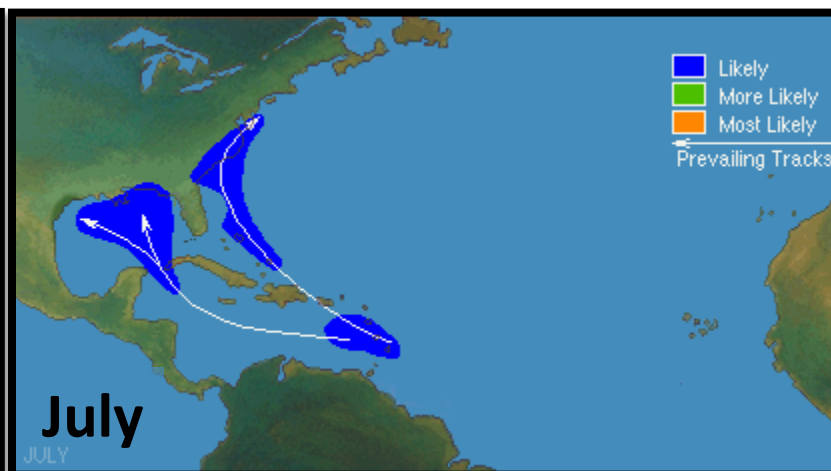
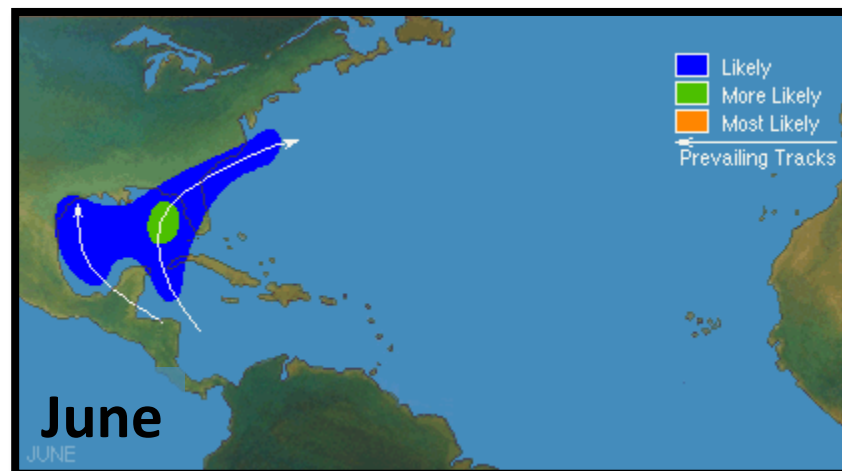
NHC Verification Statistics





National Weather Service
Lake Charles, Louisiana

Hurricane Season Climatology



weather.gov/lch



NWSLakeCharles



@NWSLakeCharles

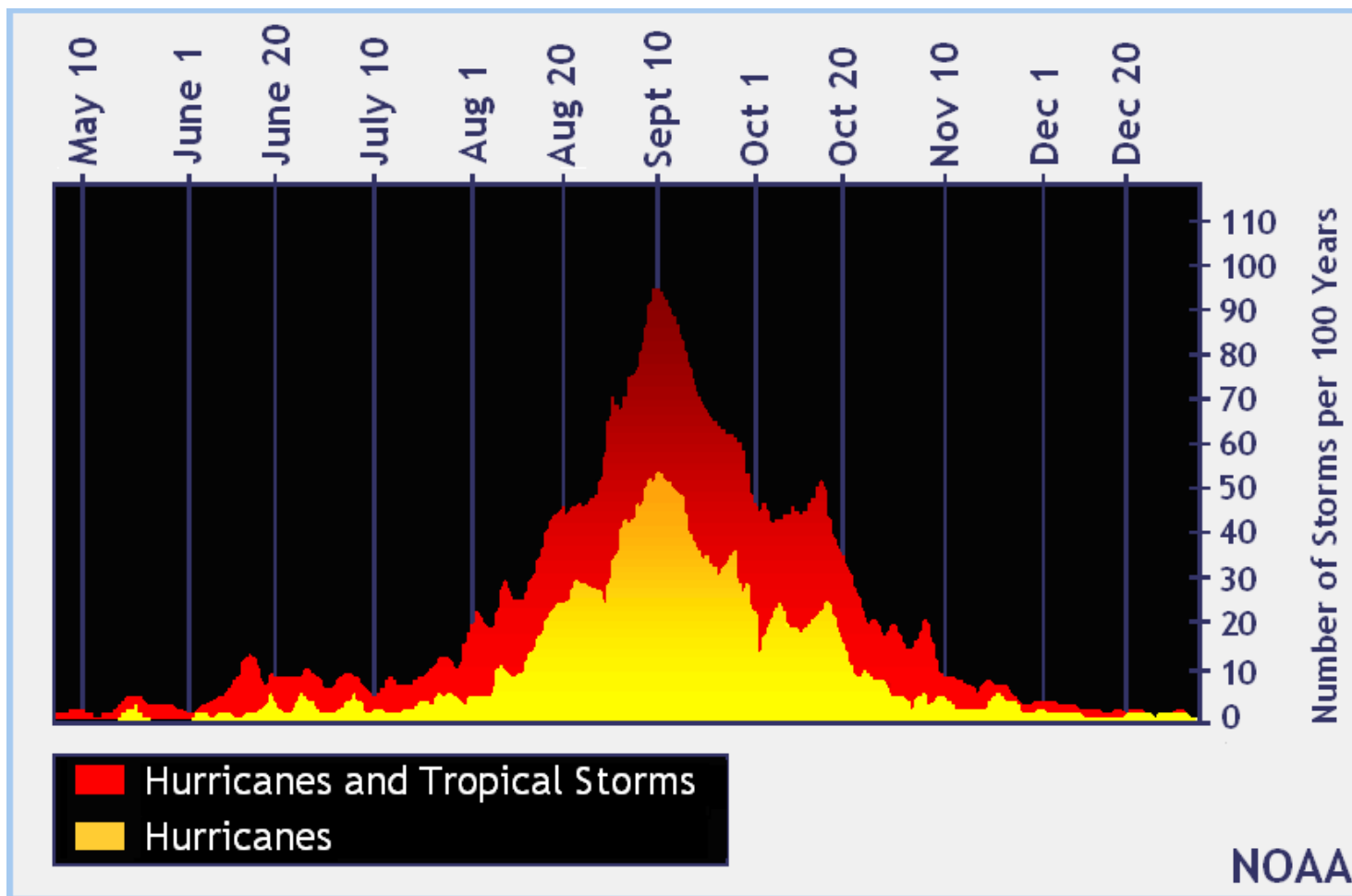


NWSLakeCharles



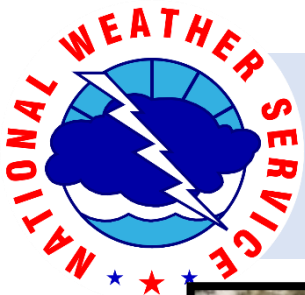
National Weather Service
Lake Charles, Louisiana

2020 Atlantic Tropical Season Names



Arthur	Laura
Bertha	Marco
Christobal	Nana
Dolly	Omar
Edouard	Paulette
Fay	Rene
Gonzalo	Sally
Hanna	Teddy
Isaias	Vicky
Josephine	Wilfred
Kyle	





National Weather Service
Lake Charles, Louisiana

2020 Atlantic Basin Forecast



In an average hurricane season, we will track over 100 tropical waves moving across the Atlantic Ocean. Around 10 to 12 become tropical storms, of which 4 to 6 become hurricanes.



weather.gov/lch



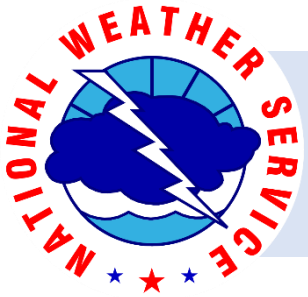
NWSLakeCharles



@NWSLakeCharles



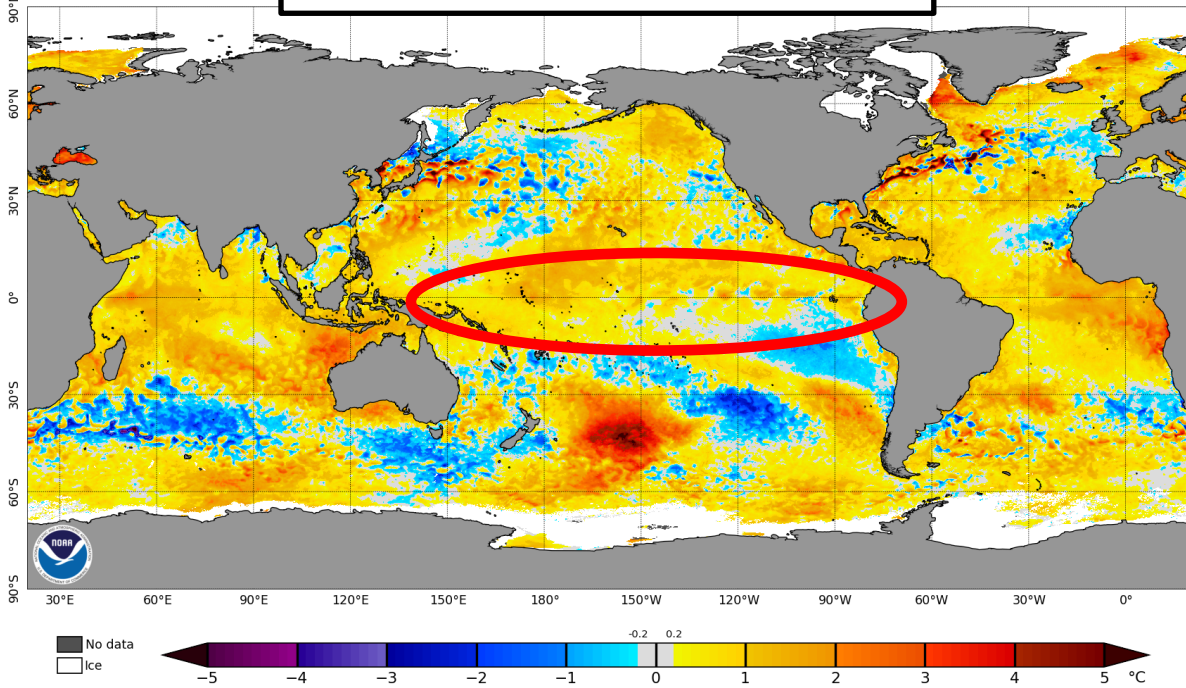
NWSLakeCharles



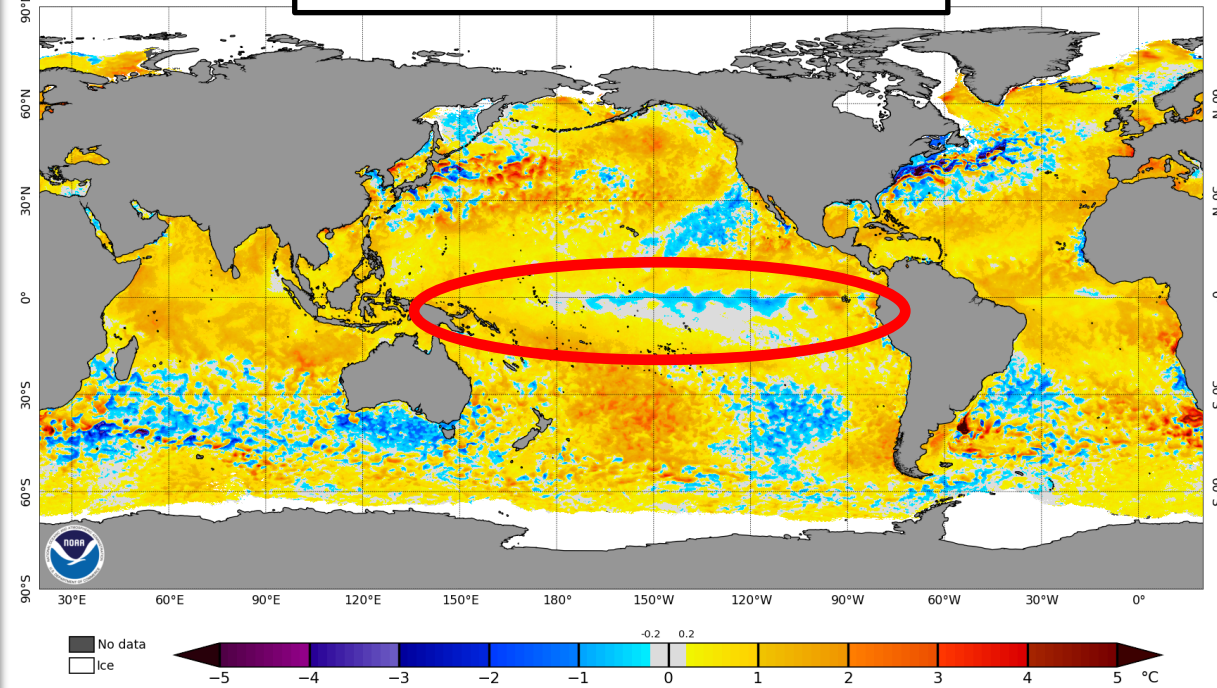
National Weather Service
Lake Charles, Louisiana

2020 Atlantic Basin Forecast

January 1, 2020



May 10, 2020



Water temperature anomalies in the equatorial Pacific have been trending from a little above normal to a little below normal. This is a neutral state of El Nino/La Nina.



weather.gov/lch



NWSLakeCharles



@NWSLakeCharles



NWSLakeCharles



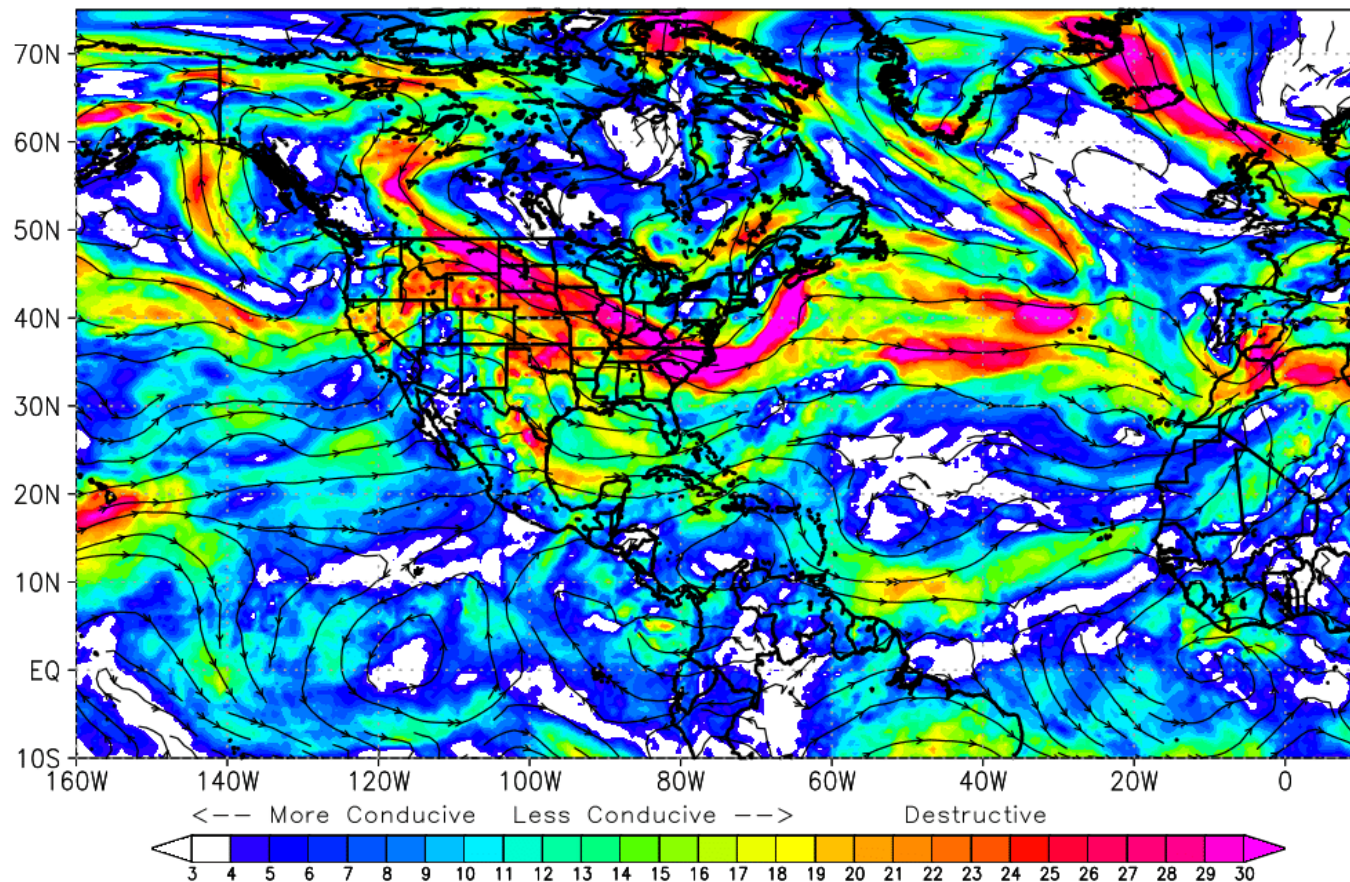
National Weather Service
Lake Charles, Louisiana

2020 Atlantic Basin Forecast

High wind shear inhibits development of tropical cyclones. It can change from one day to the next.

This time of year, there is usually pockets of high wind shear across the tropics.

06Z12MAY2020 gfs
500–850mb vertical shear (ms^{-1}) T=0 h

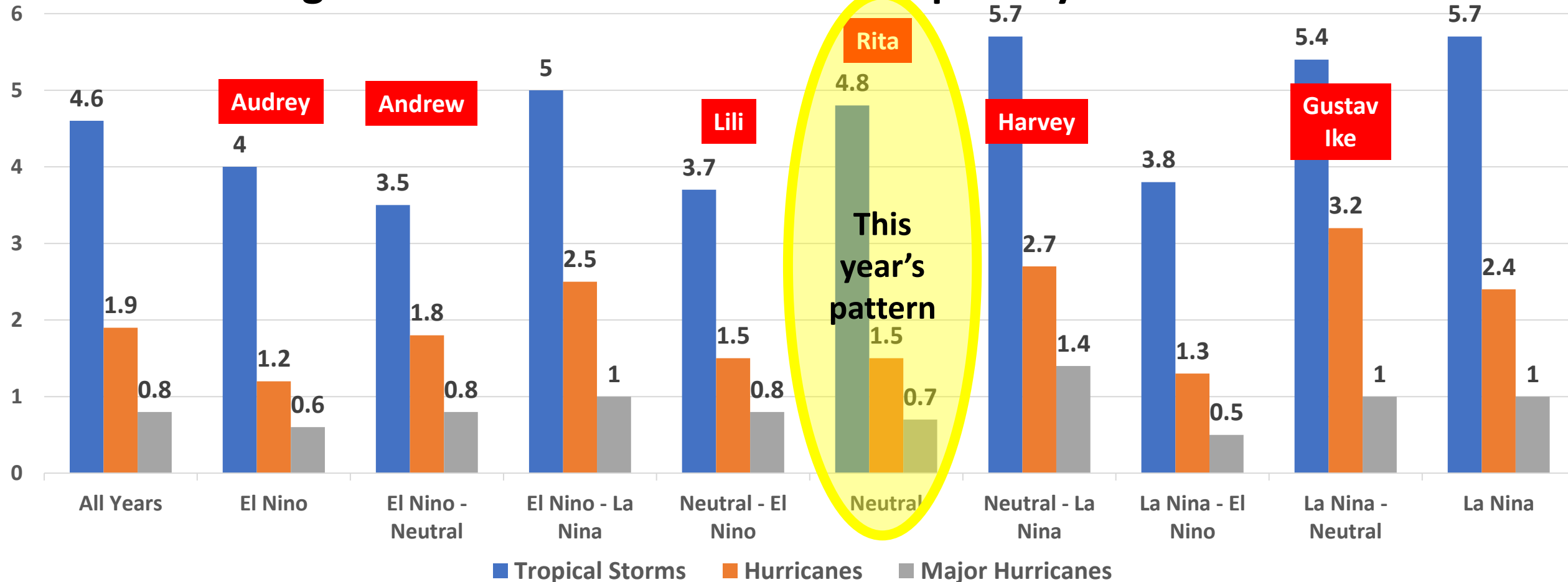




National Weather Service
Lake Charles, Louisiana

2020 Atlantic Basin Forecast

Average Number of Gulf of Mexico Tropical Systems 1950-2017



weather.gov/lch



NWSLakeCharles



@NWSLakeCharles



NWSLakeCharles

BE READY FOR HURRICANE SEASON



Before the 2020 hurricane season, there are **actions you can take to be ready.**

TODAY YOU CAN:



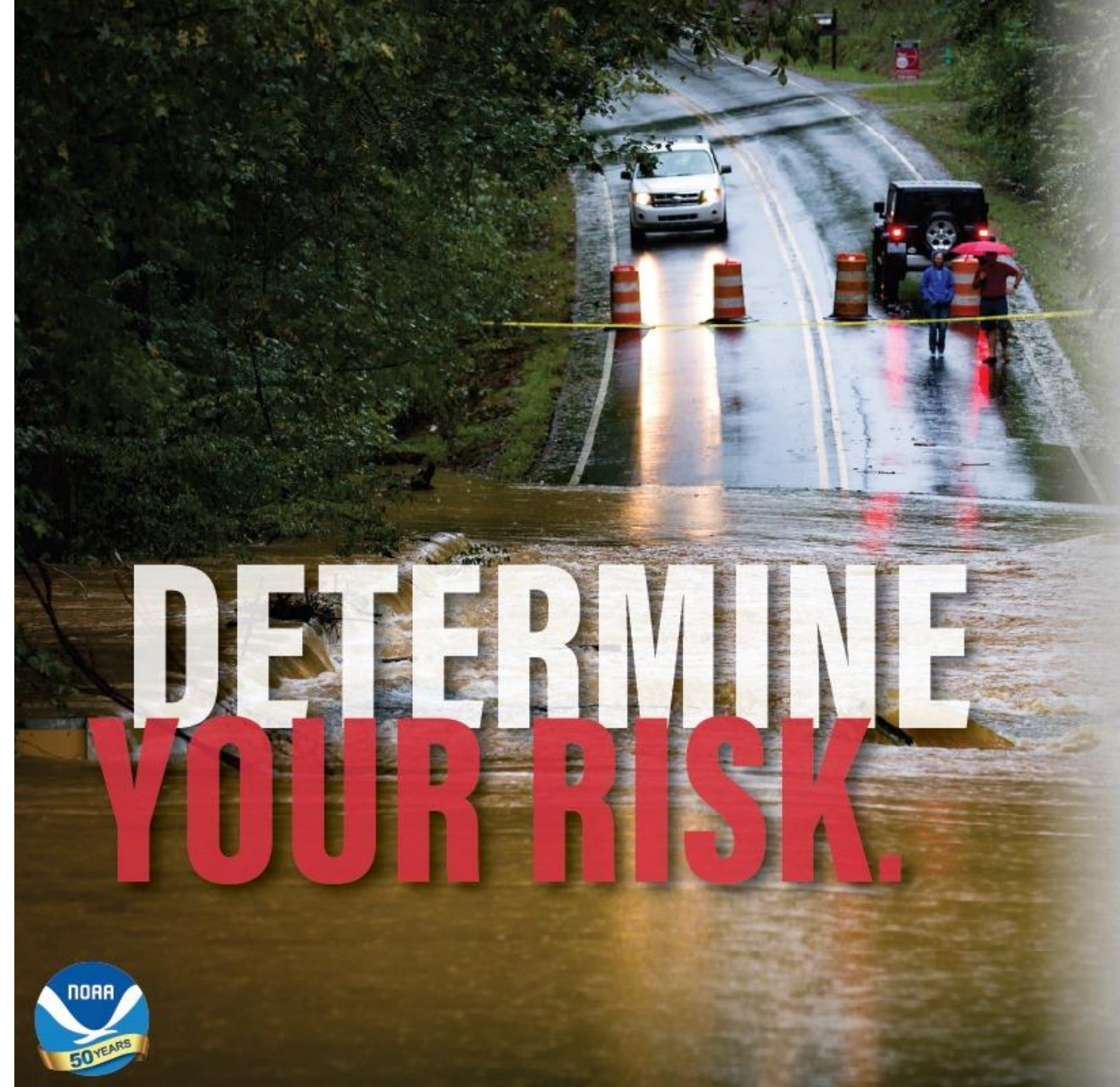
Make a list of supplies for your hurricane kit. Check to see what you already have. Restock during the next several weeks.



Organize important documents and confirm coverage with your insurance agency.



Determine if you live in a hurricane evacuation zone. Make a plan of action with multiple options.



DETERMINE YOUR RISK.

MAY 3 - Determine Your Risk

Hurricanes bring many hazards to U.S. coastlines and inland areas, including storm surge along the coast, inland flooding due to heavy rainfall, tornadoes, strong wind, rip currents and large waves.



While preparing for hurricane season, follow the latest health guidelines from the CDC and your local officials.

MAY 4 - Develop an Evacuation Plan

Find out today if you live in a hurricane evacuation zone and determine who issues evacuation orders for your area. Plan for multiple options on where you would go and how you would get there. Leave immediately if ordered to evacuate and be sure to plan for your pets.



Find out if you live
in an evacuation zone



Plan your
route out



Follow evacuation
orders



Plan for your pets

DEVELOP AN EVACUATION PLAN.



While preparing for hurricane season, follow the latest health guidelines from the CDC and your local officials.

ASSEMBLE DISASTER SUPPLIES.

MAY 5 - Assemble Disaster Supplies

Make a list of items to replenish your hurricane supplies and begin to assemble them before hurricane season begins. Have enough food and water for each person for at least three days. Be sure to fill your prescriptions and have medicine on hand. Radios, batteries and phone chargers are also must-haves. Gas up your vehicle and have extra cash on hand.



Food/Water



Medicine



Batteries, Radio,
Chargers



Gas Up



Cash on Hand

While preparing for hurricane season, follow the latest health guidelines from the CDC and your local officials.



MAY 6 - Get an Insurance Checkup

Check in with your insurance agency well before hurricane season. Remember that flood insurance must be obtained separately. Prepare your home and vehicles according to your policy. Know where your insurance documents are located and take them with you if you evacuate. Visit **floodsmart.gov** for more information.



Check with
your agent



Keep your
documents
with you



For more info:
floodsmart.gov



Consider
flood insurance



Know your
policy

While preparing for hurricane season, follow the latest health guidelines from the CDC and your local officials.

GET AN INSURANCE CHECKUP.

MAY 7 - Strengthen Your Home

There is a lot you can do around your home to help protect it from hurricane winds. Well ahead of the approaching storm, trim trees on your property, get approved window coverings, collect loose outdoor items, secure all doors on your property, and find a safe location for your vehicle.



Cover
windows



Trim trees



Secure loose
outdoor items



Secure
all doors



Move your car
to a safe location

While preparing for hurricane season, follow the latest health guidelines from the CDC and your local officials.

STRENGTHEN YOUR HOME.

MAY 8 - Help Your Neighbor

Many people, especially senior citizens, rely on the assistance of neighbors before and after hurricanes. Help your neighbors collect the supplies they'll need before the storm. Assist them with evacuation if ordered to do so or check on them after it's safe for you to head outside. You may need to adjust your hurricane preparedness plans based on the latest health and safety guidelines from the CDC and your local officials.



Help your
neighbors prepare



Help your
neighbors evacuate



Check-in after
the storm passes

HELP YOUR NEIGHBOR.



While preparing for hurricane season, follow the latest health guidelines from the CDC and your local officials.

COMPLETE A WRITTEN PLAN.

MAY 9 - Complete a Written Plan

Writing down your plan will help you avoid mistakes when faced with an emergency and ensure everyone in your home is prepared for the next storm.



Have photo
documentation
of valuables



Keep your important
documents together
for quick access



Share your plan

While preparing for hurricane season, follow the latest health guidelines from the CDC and your local officials.



National Weather Service
Lake Charles, Louisiana

Strengthening Partnerships

WRN Ambassador Initiative

What organizations can be a part of and contribute toward building a Weather-Ready Nation?

- ✓ All levels of government
- ✓ Weather, Water, Climate Enterprise
- ✓ Academia
- ✓ Businesses & non-profits

Formal recognition of organizations that work with NOAA toward building a Weather-Ready Nation

- ✓ Promote WRN messages and themes
- ✓ Engage with NOAA on potential collaborations
- ✓ Share success stories
- ✓ Serve as an “Example”



Visit: www.noaa.gov/wrn



weather.gov/lch



NWSLakeCharles



@NWSLakeCharles



NWSLakeCharles



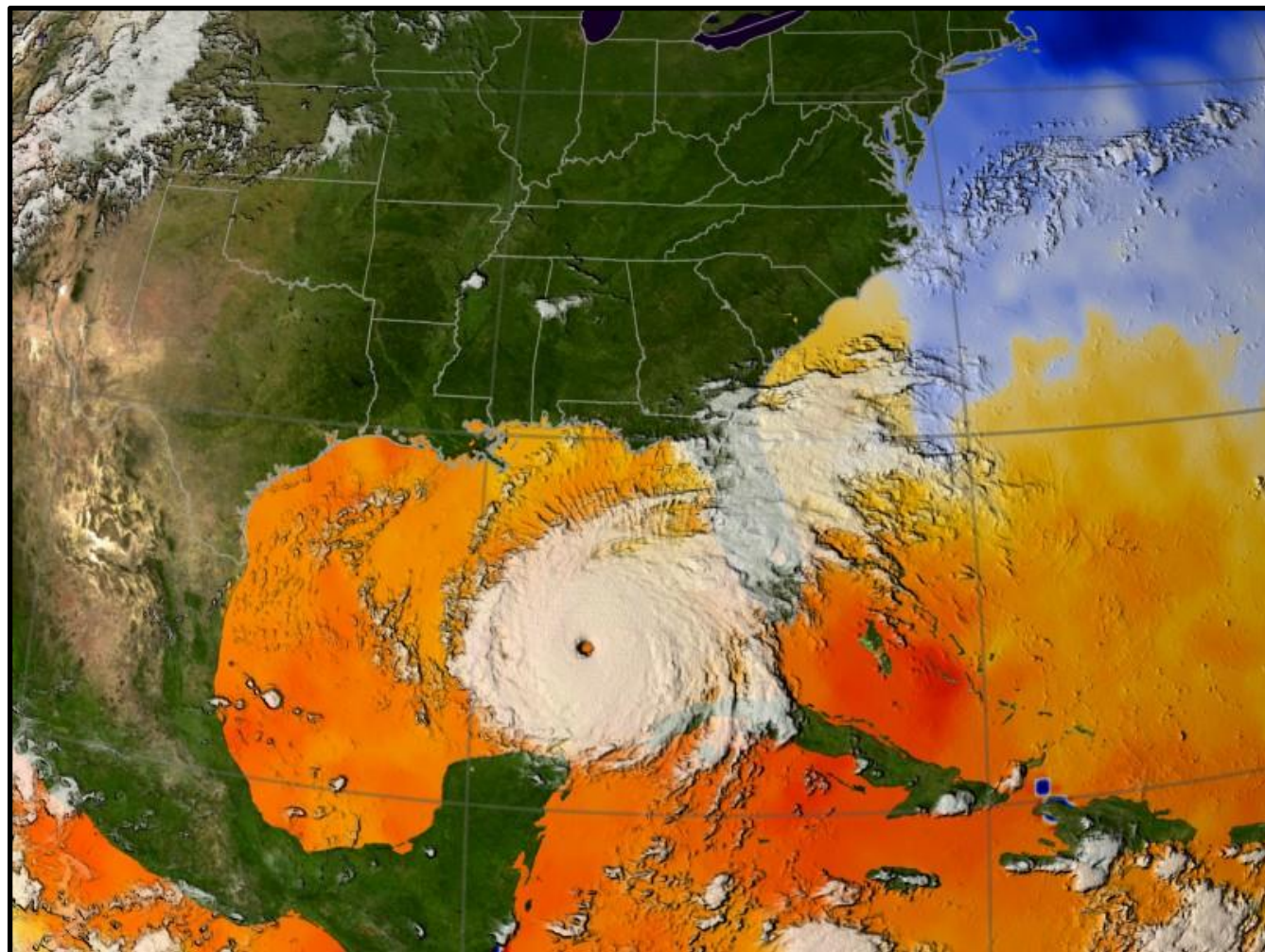
National Weather Service
Lake Charles, Louisiana

2020 Hurricane Season

By Roger Erickson, Warning Coordination Meteorologist

Keep up with NWS Lake Charles
through the links listed below...

Or call me at 337.477.5285 x223.



weather.gov/lch



NWSLakeCharles



@NWSLakeCharles



NWSLakeCharles